

SUBMITTAL

Job Name:

Purchaser:

Submitted To:

Construction:

Reference:

Approval:

Date:

Submitted By:

Unit:

Drawing #:

US12MB2BEA



Indoor Accessories

Supply Plenum	UAPT0912A
MERV Return Air Filter Box	UAMFB0912A

GE Appliances

Wired Controller	GACT17B
------------------	---------

Haier

Wired Controller	QACT17B
------------------	---------

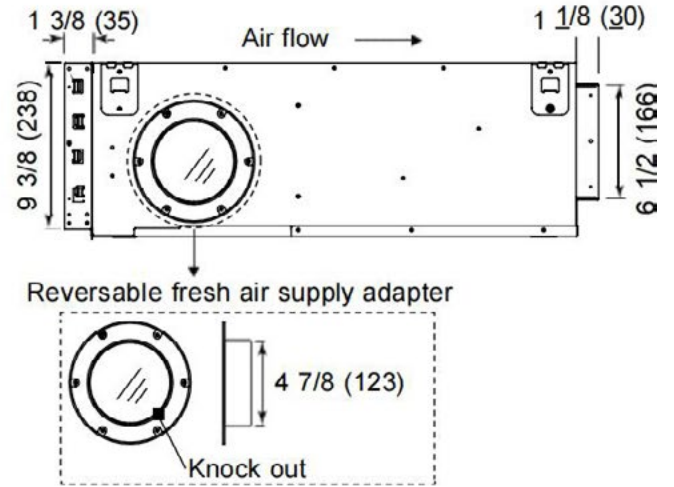
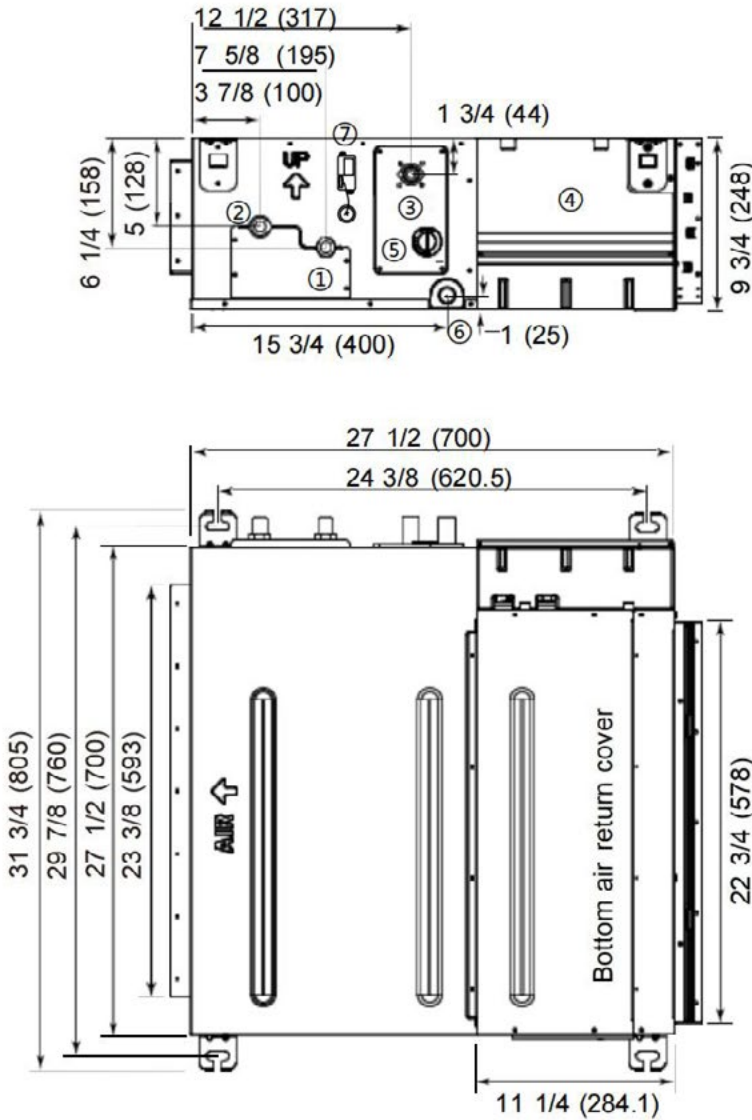
Specifications

Cooling	Rated Cooling Capacity Btu/hr	10,000
Heating	Rated Heating Capacity Btu/hr	14,000
Power	Voltage, Cycle, Phase V/Hz/Phase	208-230/60/1
	Operating Voltage Range	187-253 VAC
Indoor Unit	Fan Speed Stages	5 + Auto
	Airflow CFM: Cooling (Turbo/High/Med/Low/Quiet)	409/350/308/158/148
	Motor Speed RPM: Cooling (Turbo/High/Med/Low/Quiet)	950/870/780/680/600
	Indoor Sound Level dB: Cooling (Turbo/High/Med/Low/Quiet)	47/44/41/38/35
	Airflow CFM: Heating (Turbo/High/Med/Low/Quiet)	412/355/311/163/152
	Motor Speed RPM: Heating (Turbo/High/Med/Low/Quiet)	950/870/780/680/600
	Indoor Sound Level dB: Heating (Turbo/High/Med/Low/Quiet)	47/44/41/38/35
	Dimension: HxWxD in (mm)	9 3/4 x 31 3/4 x 27 1/2 (248 x 805 x 700)
	Weight (Net/Ship)- lbs (kg)	62.17/86.86 (28.2/39.4)
	Max. External Static Pressure in.W.G (Pa)	0.6 (150)
	Drainpipe Size	1 *
	Condensate Pump Built-In	Yes
	Max. Drain-Lift Height in(mm)	27 1/2 (700)
	WiFi**	Built-in
	Factory-Installed Refrigerant Detection Sensor (RDS)	Yes
Refrigerant Line	Liquid Pipe O.D. (in)	1/4
	Suction Pipe O.D. (in)	3/8

*Condensate drain adapter shipped with indoor unit is designed to accept a 3/4" PVC pipe.

**WiFi includes SmartHQ™ Home and SmartHQ™ Service compatibility.

US12MB2BEA



#	Description
1	Liquid pipe connection
2	Vapor pipe connection
3	Drain pump outlet
4	Control board cover
5	Inspection hole
6	Gravity drain outlet
7	WiFi module

Note: Dimensions are shown in inches (millimeters)

SUBMITTAL REVISION HISTORY

03-31-25: Submittal release.