



Haier

POWERED BY
SmartHQ™

Ductless Mini and Multi-Split Quick Reference Guide



 **Tempo**
SERIES

 **FlexFit**
SERIES

 **Arctic**
SERIES



GE APPLIANCES
a Haier company

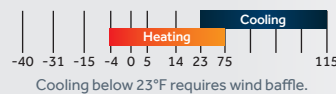
AIR&WATER
SOLUTIONS

Single-Zone Systems



- Up to 23 SEER2; 9.5 HSPF2
- 09/12K 115V options with basepan heater
- 09/12/18/24K 230V options with highwall matches

OPERATING RANGE (°F):



Standard Highwall



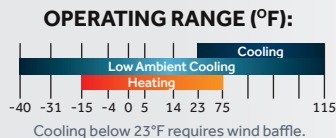
	Size	Outdoor Model	Indoor Model	AHRI#	Max Heat @ 5°F	SEER2/ EER2/ HSPF2 (IV)	Lineset: Liquid Suction	Min/ Max Line Length	Max Fuse Size A	Min Circuit Amp
115V	9K	1Q09TE1BEA	QS09WB1BEA	215564827	7,000	20/12/9.5	1/4" - 3/8"	10'/66'	25	18
	12K	1Q12TE1BEA	QS12WB1BEA	215564828	9,000	20/12/9.5	1/4" - 3/8"	10'/66'	25	18
	9K	1Q09TE2BEA	QS09WB2BEA	217124721	8,000	23/12/9.5	1/4" - 3/8"	10'/66'	10	9
	12K	1Q12TE2BEA	QS12WB2BEA	217124722	10,400	21/12/9.5	1/4" - 3/8"	10'/66'	10	9
	18K	1Q18TE2BEA	QS18WB2BEA	217124723	15,200	20/12/9.5	1/4" - 1/2"	10'/83'	20	15
	24K	1Q24TE2BEA	QS24WB2BEA	217124724	19,200	18/12/9.5	1/4" - 1/2"	10'/165'	30	20

Quick Reference Guide

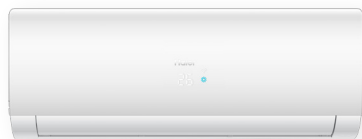
Single-Zone Systems



- Up to 23 SEER2; 9.5 HSPF2
- Low ambient heating down to -15°F (built-in basepan heater)
- -40°F low ambient cooling with wind baffle & top cover (sold separately)



Standard Highwall



Size	Outdoor Model	Indoor Model	AHRI#	Max Heat @ 5°F	SEER2/EER2/HSPF2 (IV)	Lineset: Liquid Suction	Min/Max Line Length	Max Fuse Size A	Min Circuit Amp
9K	1Q09FF2BEA	QS09WB2BEA	216968341	8,000	23/12/9.5	1/4" - 3/8"	10'/66'	10	9
12K	1Q12FF2BEA	QS12WB2BEA	216968342	10,400	21/12/9.5	1/4" - 3/8"	10'/66'	10	9
15K	1Q15FF2BEA	QS15WB2BEA	216968343	13,600	21/11.7/9.5	1/4" - 3/8"	10'/66'	20	14
18K	1Q18FF2BEA	QS18WB2BEA	216968344	15,200	20/12/9.5	1/4" - 1/2"	10'/83'	20	15
24K	1Q24FF2BEA	QS24WB2BEA	216968345	19,200	18/12/9.5	1/4" - 1/2"	10'/165'	30	20
30K	1Q3036FF2BEA	QS30WB2BEA	216968346	26,000	18/12/9.5	3/8" - 5/8"	10'/165'	35	25
36K	1Q3036FF2BEA	QS36WB2BEA	216968347	24,000	18/9.8/9.5	3/8" - 5/8"	10'/165'	35	25

Compact Cassette



Size	Outdoor Model	Indoor Model	AHRI#	Max Heat @ 5°F	SEER2/EER2/HSPF2 (IV)	Lineset: Liquid Suction	Min/Max Line Length	Max Fuse Size A	Min Circuit Amp
9K	1Q09FF2BEA	US09CB2BEA	217456243	7,500	20/12.2/9.5	1/4" - 3/8"	10'/66'	10	9
12K	1Q12FF2BEA	US12CB2BEA	217456244	9,000	19.8/12/9.5	1/4" - 3/8"	10'/66'	10	9
18K	1Q18FF2BEA	US18CB2BEA	217456245	14,400	18.5/11.7/9.1	1/4" - 1/2"	10'/83'	20	15

QACCP01WA panel required (sold separately). Built-in condensate pump.

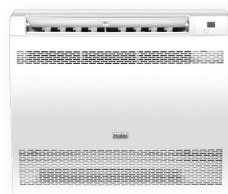
Large Cassette



Size	Outdoor Model	Indoor Model	AHRI#	Max Heat @ 5°F	SEER2/EER2/HSPF2 (IV)	Lineset: Liquid Suction	Min/Max Line Length	Max Fuse Size A	Min Circuit Amp
24K	1Q24FF2BEA	US24LB2BEA	217463701	20,000	19.5/11.7/9.5	3/8" - 5/8"	10'/165'	30	20
30K	1Q3036FF2BEA	US30LB2BEA	217456246	24,000	19/11.2/10	3/8" - 3/4"	10'/165'	35	25
36K	1Q3036FF2BEA	US36LB2BEA	217456247	26,000	18.8/10.6/9.3	3/8" - 3/4"	10'/165'	35	25

QALCP01WA panel required (sold separately). Built-in condensate pump.

Console



Size	Outdoor Model	Indoor Model	AHRI#	Max Heat @ 5°F	SEER2/EER2/HSPF2 (IV)	Lineset: Liquid Suction	Min/Max Line Length	Max Fuse Size A	Min Circuit Amp
9K	1Q09FF2BEA	US09FB2BEA	217456248	8,500	20/12/9.5	1/4" - 3/8"	10'/66'	10	9
12K	1Q12FF2BEA	US12FB2BEA	217456249	9,500	19/9.5/9.2	1/4" - 3/8"	10'/66'	10	9
18K	1Q18FF2BEA	US18FB2BEA	217456250	12,600	17/8.6/7.8	1/4" - 1/2"	10'/83'	20	15

Mid-Static Ducted



Size	Outdoor Model	Indoor Model	AHRI#	Max Heat @ 5°F	SEER2/EER2/HSPF2 (IV)	Lineset: Liquid Suction	Min/Max Line Length	Max Fuse Size A	Min Circuit Amp
9K	1Q09FF2BEA	US09MB2BEA	217456254	8,000	17.8/11.7/9.4	1/4" - 3/8"	10'/66'	10	9
12K	1Q12FF2BEA	US12MB2BEA	217456255	9,100	17/10.3/9.4	1/4" - 3/8"	10'/66'	10	9
18K	1Q18FF2BEA	US18MB2BEA	217456256	15,200	17.3/10.8/9	1/4" - 1/2"	10'/83'	20	15
24K	1Q24FF2BEA	US24MB2BEA	217456257	20,000	18/10/9.4	3/8" - 5/8"	10'/165'	30	20
30K	1Q3036FF2BEA	US30MB2BEA	217456258	25,000	17/10.3/9.4	3/8" - 3/4"	10'/165'	35	25
36K	1Q3036FF2BEA	US36MB2BEA	217456259	25,200	16/9.5/9	3/8" - 3/4"	10'/165'	35	25

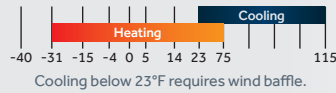
Built-in condensate pump.

Single-Zone Systems



- Up to 27 SEER2; 11 HSPF2
- Cold climate compressor with basepan heater allows low ambient heating at -31°F
- Warm air in extreme conditions; up to 100% rated heating capacity at 5°F
- Premium highwall includes built-in smart sensor

OPERATING RANGE (°F):



Premium Highwall



Size	Outdoor Model	Indoor Model	AHRI#	Max Heat @ 5°F	SEER2/EER2/HSPF2 (IV)	Lineset: Liquid Suction	Min/Max Line Length	Max Fuse Size A	Min Circuit Amp
9K	1Q09RT2BEA	QS09WP2BEA	215876548	10,000	27/12.5/11	1/4" - 3/8"	10'/66'	20	13
12K	1Q12RT2BEA	QS12WP2BEA	215876549	14,500	25/12.5/11	1/4" - 3/8"	10'/66'	20	14
18K	1Q18RT2BEA	QS18WP2BEA	215876550	19,000	20.5/12/10	1/4" - 1/2"	10'/83'	30	20

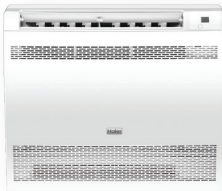
Compact Cassette



Size	Outdoor Model	Indoor Model	AHRI#	Max Heat @ 5°F	SEER2/EER2/HSPF2 (IV)	Lineset: Liquid Suction	Min/Max Line Length	Max Fuse Size A	Min Circuit Amp
9K	1Q09RT2BEA	US09CB2BEA	217036488	9,000	20/12/10	1/4" - 3/8"	10'/66'	20	13
12K	1Q12RT2BEA	US12CB2BEA	217036489	10,000	20/12/10	1/4" - 3/8"	10'/66'	20	14
18K	1Q18RT2BEA	US18CB2BEA	217036490	14,400	20/12/10	1/4" - 1/2"	10'/83'	30	20

QACCP01WA panel required (sold separately). Built-in condensate pump.

Console



Size	Outdoor Model	Indoor Model	AHRI#	Max Heat @ 5°F	SEER2/EER2/HSPF2 (IV)	Lineset: Liquid Suction	Min/Max Line Length	Max Fuse Size A	Min Circuit Amp
9K	1Q09RT2BEA	US09FB2BEA	217036485	9,000	20/12/10.5	1/4" - 3/8"	10'/66'	20	13
12K	1Q12RT2BEA	US12FB2BEA	217036486	10,000	20/12/9.5	1/4" - 3/8"	10'/66'	20	14
18K	1Q18RT2BEA	US18FB2BEA	217036487	14,400	19/9/9.5	1/4" - 1/2"	10'/83'	30	20

Mid-Static Ducted



Size	Outdoor Model	Indoor Model	AHRI#	Max Heat @ 5°F	SEER2/EER2/HSPF2 (IV)	Lineset: Liquid Suction	Min/Max Line Length	Max Fuse Size A	Min Circuit Amp
9K	1Q09RT2BEA	US09MB2BEA	217036491	8,000	19.6/12/10.5	1/4" - 3/8"	10'/66'	20	13
12K	1Q12RT2BEA	US12MB2BEA	217036492	10,000	19.8/11.7/10.5	1/4" - 3/8"	10'/66'	20	14
18K	1Q18RT2BEA	US18MB2BEA	217036493	17,000	18/11.7/10.5	1/4" - 1/2"	10'/83'	30	20

Built-in condensate pump.

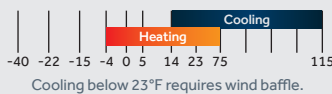
Quick Reference Guide

Multi-Zone Systems

Multi-Zone Outdoor Units

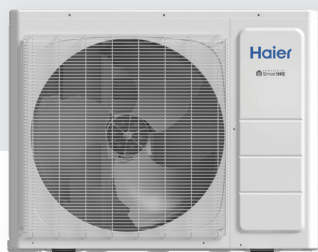


OPERATING RANGE (°F):

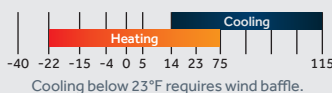


- Up to 24 SEER2; 10.0 HSPF2
- Provides ~ 65% heating capacity at 5°F

Size	Outdoor Model	Max Line All Comb.	Max Heat @ 5°F Non-Ducted	SEER2/EER2/HSPF2 (IV) Non-Ducted	SEER2/EER2/HSPF2 (IV) Ducted	AHRI#		Max Fuse Size A	Min Circuit Amp
						Non-Ducted	Ducted		
18K	2Q18FF2BEA	98'	16,600	22.5/12/10.5	18.8/10.8/9.5	217009754	217021962	25	16
24K	3Q24FF2BEA	197'	17,600	24/12/10.2	17.2/10.5/9.5	217009755	217021963	25	18
36K	4Q36FF2BEA	230'	23,000	20/10/10	16.5/8.8/9.3	217009760	217021964	30	22



OPERATING RANGE (°F):



- Up to 23 SEER2; 10.5 HSPF2
- Built-in basepan heater allows operating down to -22°F
- Provides ~ 90% heating capacity at 5°F

Size	Outdoor Model	Max Line All Comb.	Max Heat @ 5°F Non-Ducted	SEER2/EER2/HSPF2 (IV) Non-Ducted	SEER2/EER2/HSPF2 (IV) Ducted	AHRI#		Max Fuse Size A	Min Circuit Amp
						Non-Ducted	Ducted		
20K	2Q20RT2BEA	164'	20,000	20.6/12.3/10.5	17.6/10.8/10.5	217009756	217021965	30	20
24K	3Q24RT2BEA	197'	22,800	23/12.2/10.5	17.2/10.5/10	217009757	217021966	30	21
36K	4Q36RT2BEA	230'	34,000	20.5/11/10	17.4/10.2/10	217009758	217021967	40	35
42K	5Q42RT2BEA	262'	35,000	20.5/10.5/9.5	17.4/10.2/9.5	217009759	217021968	40	36

Multi-Zone Indoor Units



Highwall

Size	Indoor Model	Lineset: Liquid Suction
------	--------------	-------------------------

Standard

7K	QS07WB2BEA	1/4" - 3/8"
9K	QS09WB2BEA	1/4" - 3/8"
12K	QS12WB2BEA	1/4" - 3/8"
18K	QS18WB2BEA	1/4" - 1/2"
24K	QS24WB2BEA	1/4" - 1/2"

Premium

9K	QS09WP2BEA	1/4" - 3/8"
12K	QS12WP2BEA	1/4" - 3/8"
18K	QS18WP2BEA	1/4" - 1/2"
24K	QS24WP2BEA	1/4" - 1/2"

Console

Size	Indoor Model	Lineset: Liquid Suction
------	--------------	-------------------------

9K	US09FB2BEA	1/4" - 3/8"
12K	US12FB2BEA	1/4" - 3/8"
18K	US18FB2BEA	1/4" - 1/2"



Cassette

Size	Indoor Model	Lineset: Liquid Suction
------	--------------	-------------------------

9K	US09CB2BEA ¹	1/4" - 3/8"
12K	US12CB2BEA ¹	1/4" - 3/8"
18K	US18CB2BEA ¹	1/4" - 1/2"
24K	US24LB2BEA ²	3/8" - 5/8"

¹QACCP01WA panel required (sold separately). Built-in condensate pump.

²QALCP01WA panel required (sold separately). Built-in condensate pump.



Mid-Static Ducted

Size	Indoor Model	Lineset: Liquid Suction
------	--------------	-------------------------

7K	US07MB2BEA	1/4" - 3/8"
9K	US09MB2BEA	1/4" - 3/8"
12K	US12MB2BEA	1/4" - 3/8"
18K	US18MB2BEA	1/4" - 1/2"
24K	US24MB2BEA	3/8" - 5/8"

Built-in condensate pump.

Quick Reference Guide

Multi-Zone Capacity Combination Matrix

2Q18FF2B**
2Q20RT2B**

- No adapters required/shipped

	Combinations	
	Port B	Port A
	Port Size: 1/4" x 3/8"	Port Size: 1/4" x 3/8"
Two Zone	7K	7K
	9K	7K
	9K	9K
	12K	7K
	12K	9K
	12K	12K
	15K	7K
	15K	9K

3Q24FF2B** (Ships with adapter D)
3Q24RT2B** (Ships with adapter D)

- No adapters required for Ports B, A

	Combinations			
	Port C		Port B	Port A
	Port Size: 1/4" x 3/8"	Required Adapter	Port Size: 1/4" x 3/8"	Port Size: 1/4" x 3/8"
Two Zone	7K	-	7K	-
	9K	-	7K	-
	9K	-	9K	-
	12K	-	7K	-
	12K	-	9K	-
	12K	-	12K	-
	15K	-	7K	-
	15K	-	9K	-
	15K	-	12K	-
	15K	-	15K	-
	18K	D	7K	-
	18K	D	9K	-
	18K	D	12K	-
Three Zone	7K	-	7K	7K
	9K	-	7K	7K
	9K	-	9K	7K
	9K	-	9K	9K
	12K	-	7K	7K
	12K	-	9K	7K
	12K	-	9K	9K
	12K	-	12K	7K
	15K	-	7K	7K
	15K	-	9K	7K
	15K	-	9K	9K
	18K	D	7K	7K

4Q36FF2B** (Ships with adapters D and E)
4Q36RT2B** (Ships with adapters D and E)

- No adapters required for Ports B, A

	Combinations					
	Port D		Port C		Port B	Port A
	Port Size: 1/4" x 1/2"	Required Adapter	Port Size: 1/4" x 3/8"	Required Adapter	Port Size: 1/4" x 3/8"	Port Size: 1/4" x 3/8"
Two Zone	18K	-	9K	-	-	-
	18K	-	12K	-	-	-
	18K	-	15K	-	-	-
	18K	-	18K	D	-	-
	18K	-	24K	A, B D	-	-
	24K	A, C -	7K	-	-	-
	24K	A, C -	9K	-	-	-
	24K	A, C -	12K	-	-	-
	24K	A, C -	15K	-	-	-
	24K	A, C -	24K	A, B D	-	-
	-	-	9K	-	9K	9K
	-	-	12K	-	9K	7K
	-	-	12K	-	9K	9K
	-	-	12K	-	12K	7K
Three Zone	-	-	12K	-	12K	9K
	-	-	12K	-	12K	12K
	-	-	15K	-	7K	7K
	-	-	15K	-	9K	7K
	-	-	15K	-	12K	7K
	-	-	15K	-	15K	7K
	-	-	15K	-	12K	7K
	-	-	15K	-	9K	9K
	-	-	15K	-	12K	9K
	-	-	15K	-	15K	9K
	-	-	15K	-	12K	12K
	-	-	15K	-	15K	12K
	-	-	15K	-	15K	15K
	18K	-	7K	-	7K	-
	18K	-	9K	-	7K	-
	18K	-	9K	-	9K	-
	18K	-	12K	-	7K	-
	18K	-	12K	-	9K	-
	18K	-	12K	-	12K	-
	18K	-	15K	-	7K	-
	18K	-	15K	-	9K	-
	18K	-	15K	-	12K	-
	18K	-	15K	-	15K	-
	18K	-	18K	D	7K	-
	18K	-	18K	D	9K	-
	18K	-	18K	D	12K	-
	24K	A, C -	7K	-	7K	-
	24K	A, C -	9K	-	7K	-
	24K	A, C -	9K	-	9K	-
	24K	A, C -	12K	-	7K	-
	24K	A, C -	12K	-	9K	-
	24K	A, C -	12K	-	12K	-
	24K	A, C -	15K	-	7K	-
	24K	A, C -	15K	-	9K	-
Four Zone	7K	E	7K	-	7K	7K
	9K	E	7K	-	7K	7K
	9K	E	9K	-	7K	7K
	9K	E	9K	-	9K	7K
	9K	E	9K	-	9K	9K
	12K	E	7K	-	7K	7K
	12K	E	9K	-	7K	7K
	12K	E	9K	-	9K	7K
	12K	E	12K	-	7K	7K
	12K	E	12K	-	9K	7K
	12K	E	12K	-	9K	9K
	12K	E	12K	-	12K	7K
	12K	E	12K	-	12K	9K
	15K	E	7K	-	7K	7K
	15K	E	9K	-	7K	7K
	15K	E	9K	-	9K	7K
	15K	E	9K	-	9K	9K
	15K	E	12K	-	7K	7K
	15K	E	12K	-	9K	7K
	15K	E	12K	-	9K	9K
	15K	E	12K	-	12K	7K
	15K	E	12K	-	12K	9K
	15K	E	15K	-	7K	7K
	15K	E	15K	-	9K	7K
	15K	E	15K	-	9K	9K
	18K	-	7K	-	7K	7K
	18K	-	9K	-	7K	7K
	18K	-	9K	-	9K	7K
	18K	-	9K	-	9K	9K
	18K	-	12K	-	7K	7K
	18K	-	12K	-	9K	7K
	18K	-	12K	-	9K	9K
	18K	-	15K	-	7K	7K
	24K	A, C -	7K	-	7K	7K
	24K	A, C -	9K	-	7K	7K

Lineset Adapters

		Part #
A	1/4" to 3/8" (Liquid line for ports C & D)	WJ01X35713
B	3/8" to 5/8" (Vapor line for port C)	WJ01X35714
C	1/2" to 5/8" (Vapor line for port D)	WJ01X35715
D	3/8" to 1/2" (Vapor line for port C)	WJ01X35716
E	1/2" to 3/8" (Vapor line for port C or D)	WJ01X35717

These 24K models require 3/8" liquid and 5/8" vapor linesets
US24LB2BE**, US24MB2BE**

These 24K models require 1/4" liquid and 1/2" vapor linesets
QS24WB2B**, QS24WP2B**

All 18K models require 1/4" liquid and 1/2" vapor linesets.
All 7K, 9K, 12K and 15K models require 1/4" liquid and 3/8" vapor linesets.

Quick Reference Guide

Multi-Zone Capacity Combination Matrix

5Q42RT2B** (Ships with two (2) adapter E)

• No adapters required for Ports B, A

	Combinations							
	Port E		Port D		Port C		Port B	Port A
	Port Size: 1/4" x 1/2"	Required Adapter*	Port Size: 1/4" x 1/2"	Required Adapter*	Port Size: 1/4" x 3/8"	Required Adapter*	Port Size: 1/4" x 3/8"	Port Size: 1/4" x 3/8"
Two Zone	18K	-	-	-	9K	-	-	-
	18K	-	-	-	12K	-	-	-
	18K	-	-	-	15K	-	-	-
	18K	-	18K	-	-	-	-	-
	24K	A, C	-	-	7K	-	-	-
	24K	A, C	-	-	9K	-	-	-
	24K	A, C	-	-	12K	-	-	-
	24K	A, C	-	-	15K	-	-	-
	24K	A, C	18K	-	-	-	-	-
	24K	A, C	24K	A, C	-	-	-	-
Three Zone	-	-	-	-	9K	-	9K	9K
	-	-	-	-	12K	-	9K	9K
	-	-	-	-	12K	-	9K	7K
	-	-	-	-	12K	-	12K	7K
	-	-	-	-	12K	-	12K	9K
	-	-	-	-	12K	-	12K	12K
	-	-	-	-	15K	-	7K	7K
	-	-	-	-	15K	-	9K	7K
	-	-	-	-	15K	-	9K	9K
	-	-	-	-	15K	-	12K	7K
	-	-	-	-	15K	-	12K	9K
	-	-	-	-	15K	-	12K	12K
	-	-	-	-	15K	-	15K	7K
	-	-	-	-	15K	-	15K	9K
	-	-	-	-	15K	-	15K	12K
	-	-	-	-	15K	-	15K	15K
	18K	-	-	-	7K	-	7K	-
	18K	-	-	-	9K	-	7K	-
	18K	-	-	-	9K	-	9K	-
	18K	-	-	-	12K	-	7K	-
	18K	-	-	-	12K	-	9K	-
	18K	-	-	-	12K	-	12K	-
	18K	-	-	-	15K	-	7K	-
	18K	-	-	-	15K	-	9K	-
	18K	-	-	-	15K	-	12K	-
	18K	-	-	-	15K	-	15K	-
	18K	-	18K	-	7K	-	-	-
	18K	-	18K	-	9K	-	-	-
	18K	-	18K	-	12K	-	-	-
	18K	-	18K	-	15K	-	-	-
	18K	-	18K	-	18K	D	-	-
	24K	A, C	-	-	7K	-	7K	-
	24K	A, C	-	-	9K	-	7K	-
	24K	A, C	-	-	9K	-	9K	-
	24K	A, C	-	-	12K	-	7K	-
	24K	A, C	-	-	12K	-	9K	-
	24K	A, C	-	-	12K	-	12K	-
	24K	A, C	-	-	15K	-	7K	-
	24K	A, C	-	-	15K	-	9K	-
	24K	A, C	-	-	15K	-	12K	-
	24K	A, C	-	-	15K	-	15K	-
	24K	A, C	18K	-	7K	-	-	-
	24K	A, C	18K	-	9K	-	-	-
	24K	A, C	18K	-	12K	-	-	-
	24K	A, C	18K	-	15K	-	-	-
Four Zone	7K	E	-	-	7K	-	7K	7K
	9K	E	-	-	7K	-	7K	7K
	9K	E	-	-	9K	-	7K	7K
	9K	E	-	-	9K	-	9K	7K
	9K	E	-	-	9K	-	9K	9K
	12K	E	-	-	7K	-	7K	7K
	12K	E	-	-	9K	-	7K	7K
	12K	E	-	-	9K	-	9K	7K
	12K	E	-	-	9K	-	9K	9K
	12K	E	-	-	12K	-	7K	7K
	12K	E	-	-	12K	-	9K	7K
	12K	E	-	-	12K	-	12K	7K
	12K	E	-	-	12K	-	9K	7K
	12K	E	-	-	12K	-	12K	12K
	12K	E	-	-	12K	-	9K	9K
	12K	E	-	-	12K	-	7K	7K
	12K	E	-	-	12K	-	9K	7K
	12K	E	-	-	12K	-	12K	7K
	12K	E	-	-	12K	-	9K	7K
	12K	E	-	-	12K	-	12K	7K
	12K	E	-	-	12K	-	9K	7K
	12K	E	-	-	12K	-	12K	7K
	12K	E	-	-	12K	-	9K	7K
	12K	E	-	-	12K	-	12K	7K
	12K	E	-	-	12K	-	9K	7K
	12K	E	-	-	12K	-	12K	7K
	12K	E	-	-	12K	-	9K	7K
	12K	E	-	-	12K	-	12K	7K
	12K	E	-	-	12K	-	9K	7K
	12K	E	-	-	12K	-	12K	7K
	12K	E	-	-	12K	-	9K	7K
Five Zone	15K	E	-	-	9K	-	7K	7K
	15K	E	-	-	9K	-	9K	7K
	15K	E	-	-	9K	-	9K	9K
	15K	E	-	-	12K	-	7K	7K
	15K	E	-	-	12K	-	9K	7K
	15K	E	-	-	12K	-	9K	9K
	15K	E	-	-	12K	-	12K	7K
	15K	E	-	-	12K	-	12K	9K
	15K	E	-	-	12K	-	12K	12K
	15K	E	-	-	15K	-	7K	7K
	15K	E	-	-	15K	-	9K	7K
	15K	E	-	-	15K	-	9K	9K
	15K	E	-	-	15K	-	12K	7K
	15K	E	-	-	15K	-	12K	9K
	15K	E	-	-	15K	-	12K	12K
	15K	E	-	-	15K	-	7K	7K
	15K	E	-	-	15K	-	9K	7K
	15K	E	-	-	15K	-	9K	9K
	15K	E	-	-	15K	-	12K	7K
	15K	E	-	-	15K	-	12K	9K
	15K	E	-	-	15K	-	12K	12K

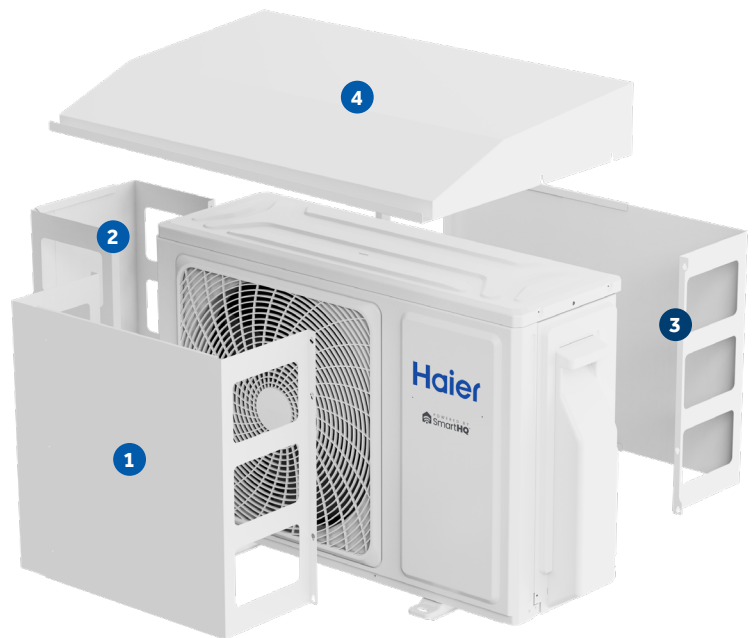
Indoor and Outdoor **Compatibility Chart**

	OUTDOOR UNITS																							
	TEMPO						FLEXFIT						ARCTIC					FLEXFIT MULTI			ARCTIC MULTI			
	115V		230V																					
1Q09TE1BEA	1Q12TE1BEA	1Q09TE2BEA	1Q12TE2BEA	1Q18TE2BEA	1Q24TE2BEA	1Q09FF2BEA	1Q12FF2BEA	1Q15FF2BEA	1Q18FF2BEA	1Q24FF2BEA	1Q3036FF2BEA	1Q09RT2BEA	1Q12RT2BEA	1Q18RT2BEA	1Q24RT2BEA	1Q3036RT2BEA	2Q18FF2BEA	3Q24FF2BEA	4Q36FF2BEA	2Q20RT2BEA	3Q24RT2BEA	4Q36RT2BEA	5Q42RT2BEA	
	INDOOR STANDARD HIGHWALL UNITS																							
QS09WB1BEA	✓																							
QS12WB1BEA		✓																						
QS07WB2BEA																	✓	✓	✓	✓	✓	✓	✓	
QS09WB2BEA			✓				✓										✓	✓	✓	✓	✓	✓	✓	
QS12WB2BEA				✓				✓									✓	✓	✓	✓	✓	✓	✓	
QS15WB2BEA									✓															
QS18WB2BEA					✓				✓								✓	✓	✓	✓	✓	✓	✓	
QS24WB2BEA						✓				✓									✓			✓	✓	
QS30WB2BEA											✓						✓							
QS36WB2BEA											✓						✓							
	INDOOR PREMIUM HIGHWALL UNITS																							
QS09WP2BEA												✓					✓	✓	✓	✓	✓	✓	✓	
QS12WP2BEA													✓				✓	✓	✓	✓	✓	✓	✓	
QS18WP2BEA														✓			✓	✓	✓	✓	✓	✓	✓	
QS24WP2BEA															✓				✓			✓	✓	
	INDOOR COMPACT CASSETTE UNITS																							
US09CB2BEA							✓					✓					✓	✓	✓	✓	✓	✓	✓	
US12CB2BEA								✓					✓				✓	✓	✓	✓	✓	✓	✓	
US18CB2BEA									✓					✓			✓	✓	✓	✓	✓	✓	✓	
	INDOOR LARGE CASSETTE UNITS																							
US24LB2BEA										✓					✓				✓			✓	✓	
US30LB2BEA											✓					✓								
US36LB2BEA											✓					✓								
	INDOOR CONSOLE UNITS																							
US09FB2BEA							✓					✓					✓	✓	✓	✓	✓	✓	✓	
US12FB2BEA								✓					✓				✓	✓	✓	✓	✓	✓	✓	
US18FB2BEA									✓					✓			✓	✓	✓	✓	✓	✓	✓	
	INDOOR DUCTED UNITS																							
US07MB2BEA																	✓	✓	✓	✓	✓	✓	✓	
US09MB2BEA							✓					✓					✓	✓	✓	✓	✓	✓	✓	
US12MB2BEA								✓					✓				✓	✓	✓	✓	✓	✓	✓	
US18MB2BEA									✓					✓			✓	✓	✓	✓	✓	✓	✓	
US24MB2BEA										✓					✓				✓			✓	✓	
US30MB2BEA											✓					✓								
US36MB2BEA												✓					✓							
US42MB2BEA																								
US48MB2BEA																								

Ductless Accessories

Operating Conditions	Recommended Accessories			
	1 Front Wind Baffle	2 Side Wind Baffle	3 Back Wind Baffle	4 Top Cover
Low Ambient Cooling below 23°F (5°C) (server/mechanical room)	Required	Required	Required	Required
Low Ambient Heating below 5°F (-15°C)	-	Strongly Recommended	Strongly Recommended	Strongly Recommended
Unit installed on a flat roof or facing prevailing wind	Required	-	-	-

A front wind baffle is required for all climates when mounted on a flat roof or facing prevailing winds.

[illegible]

Cassette Panels

Required for cassette indoor units; sold separately.
Remote controller (WJ26X35394) is included with cassette panel.



QACCP01WA

Compact Cassette Panel

Fits Models:
US09CB2BEA
US12CB2BEA
US18CB2BEA



QALCP01WA

Large Cassette Panel

Fits Models:
US24LB2BEA
US30LB2BEA
US36LB2BEA

Refrigerant Detection Sensor (RDS)



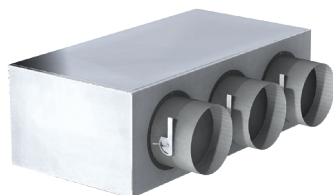
UALS01A

Ductless Refrigerant
Detection Sensor

Note: See room sizing requirements to determine if the Refrigerant Detection Sensor (RDS) is required and needs to be purchased separately for highwall and cassette indoor units. RDS is factory-installed on console and ducted units.

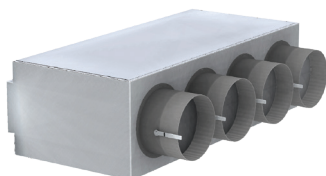
Supply Plenums

Supply plenums for ducted indoor models.



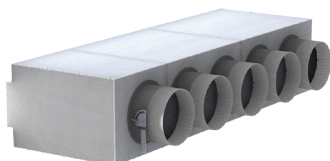
UAPT0912A

Fits Models:
US09MB2BEA
US12MB2BEA



UAPT1824A

Fits Models:
US18MB2BEA
US24MB2BEA

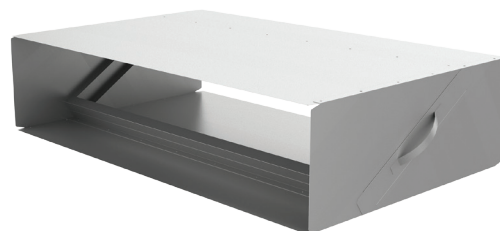


UAPT3048A

Fits Models:
US30MB2BEA
US36MB2BEA
US42MB2BEA
US48MB2BEA

Merv Return Air Filter Boxes

MERV return air filter boxes for ducted indoor models.



UAMFB0912A

Fits Models:
US09MB2BEA
US12MB2BEA

UAMFB1824A

Fits Models:
US18MB2BEA
US24MB2BEA

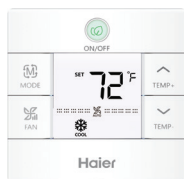
UAMFB3048A

Fits Models:
US30MB2BEA
US36MB2BEA
US42MB2BEA
US48MB2BEA

Controllers

Controllers from Haier allow you to take command of your environment. With convenient user-friendly button layouts and clear digital displays, the system can be easily set to meet and maintain comfort levels.

Wired Controller



Compatible with all indoor unit types.

	QACT17B
Power Supply	12V AC
Controllable Indoor Groups	Up to 16
On/Off	•
Modes	Auto-Cool-Dry-Heat-Fan-Auto
Precise Temperature Control +/- 1F (+/- 0.5C)	•
Fan Speed Adjustment	•
Turbo	•
Quiet	•
Airflow Direction - Up/Down	•
Airflow Direction - Left/Right	•
Four-Way Cassette Blade Control	
Indoor Temperature Display	•
Filter Change Reminder	500 hr
Clock	
Error Code Reporting/ Recording	•
Control Lock	•
Daily Program	
Weekly Program	
Sleep	
Backlight	•
Fahrenheit/Celsius Display	•
Temperature Range Limit	•
Temperature Compensation	•
Static Pressure Setting	•
Groups Setting	•
Password	

Remote Controllers



Ships with standard highwalls.



Ships with consoles.



Ships with premium highwalls & cassette panels.

	WJ26X35393	WJ26X35813	WJ26X35394
Individual Control	•	•	•
Backlight	•	•	•
Up/Down Louver Oscillating Control	•	•	•
Left/Right Louver Oscillating Control			•
Four-Way Cassette Air Supply Control			•
Child Lock	•	•	•
Indoor LED Display On/Off	•	•	•
Fahrenheit/Celsius Display	•	•	•
Precise Temperature Control +/- 1F (+/- 0.5C)	•	•	•
Motion Sensor			•

5" Central Controller

5" LED Touch Screen

A vibrant and intuitive interface for easy navigation and control.

Integration Capability

Seamlessly integrates both ductless and central HVAC systems for unified management.

Multi-Zone Control






Manages up to 31 ductless zones and 1 central 24V HVAC zone, providing comprehensive climate control.



	UACT32A
Screen Saving	•
Backlight	•
Power Supply	24VAC*
Max. IDUs Controllable	31 + (1) 24VAC Central Zone
Indoor/Set-Point Temperature Display	•
Interlock Input	•
Interlock Output Dry Contact	•
Temperature Set Range	60-86°F (16-30°C)
Zones	Up to 31 Zones
Modes	Cool, Heat, Auto, Dry, Fan
Fan Speeds	Low, Med, High
Group Control	•
Individual IDU Control	•
Dual System Rotational Operation	•
Temperature Set Range	40-99°F (5-37°C)
Humidity	Display in %
Mode	Cool, Heat, Auto
Fan Speed	Auto, Circulating, On
WiFi/Alexa/Google Home	•

*if not connecting to 24V central HVAC system, a field supplied 24VAC transformer is needed.

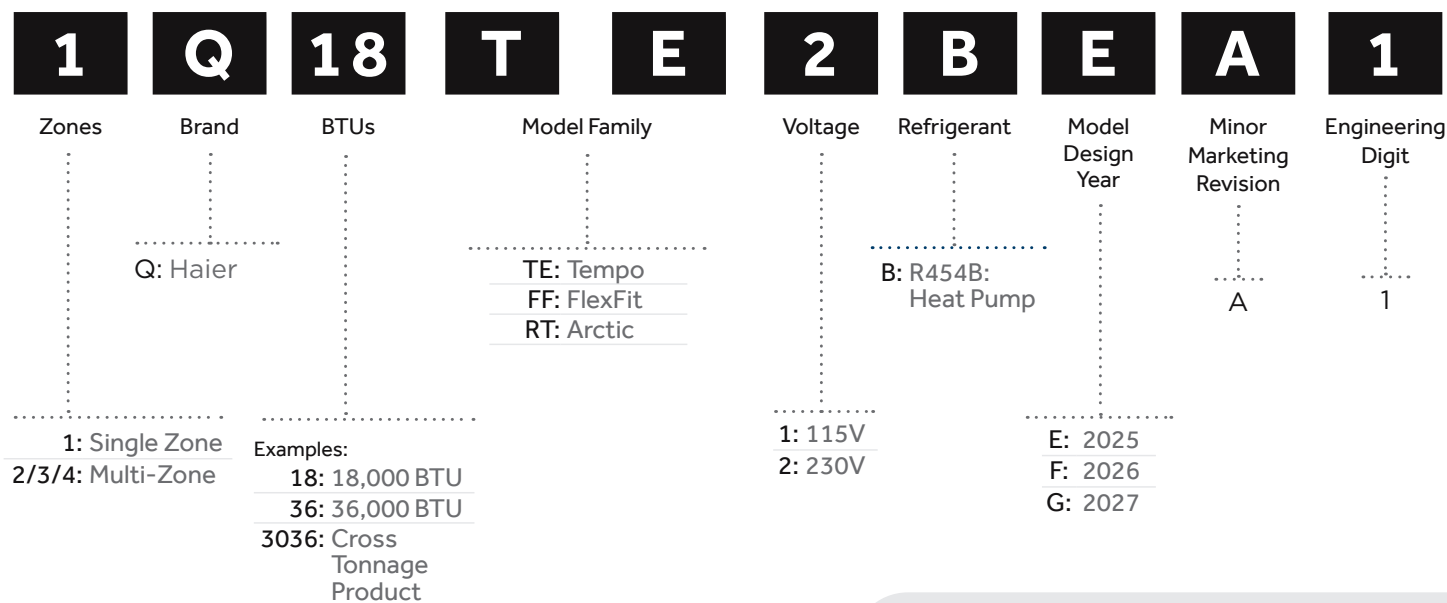
Indoor Unit Accessory Compatibility Table

		Remote Controllers			Wired Controller	Refrigerant Detection Sensor (RDS)
						
	Model Number	WJ26X35393	WJ26X35813	WJ26X35394	QACT17B	UALS01A
Caliber 115V Highwall	QS09WB1BEA	●			○	○
	QS12WB1BEA	●			○	○
Standard Highwall	QS07WB2BEA	●			○	○
	QS09WB2BEA	●			○	○
	QS12WB2BEA	●			○	○
	QS15WB2BEA	●			○	○
	QS18WB2BEA	●			○	○
	QS24WB2BEA	●			○	○
	QS30WB2BEA	●			○	○
	QS36WB2BEA	●			○	○
Premium Highwall	QS09WP2BEA			●	○	○
	QS12WP2BEA			●	○	○
	QS18WP2BEA			●	○	○
	QS24WP2BEA			●	○	○
Compact Cassette	US09CB2BEA					○
	US12CB2BEA					○
	US18CB2BEA					○
	QACCP01WA*			●	○	
Large Cassette	US24LB2BEA					○
	US30LB2BEA					○
	US36LB2BEA					○
	QALCP01WA*			●	○	
Console	US09FB2BEA		●		○	●
	US12FB2BEA		●		○	●
	US18FB2BEA		●		○	●
Mid-Static Ducted	US09MB2BEA				⊙	●
	US12MB2BEA				⊙	●
	US18MB2BEA				⊙	●
	US24MB2BEA				⊙	●
	US30MB2BEA				⊙	●
	US36MB2BEA				⊙	●
	US42MB2BEA				⊙	●
	US48MB2BEA				⊙	●

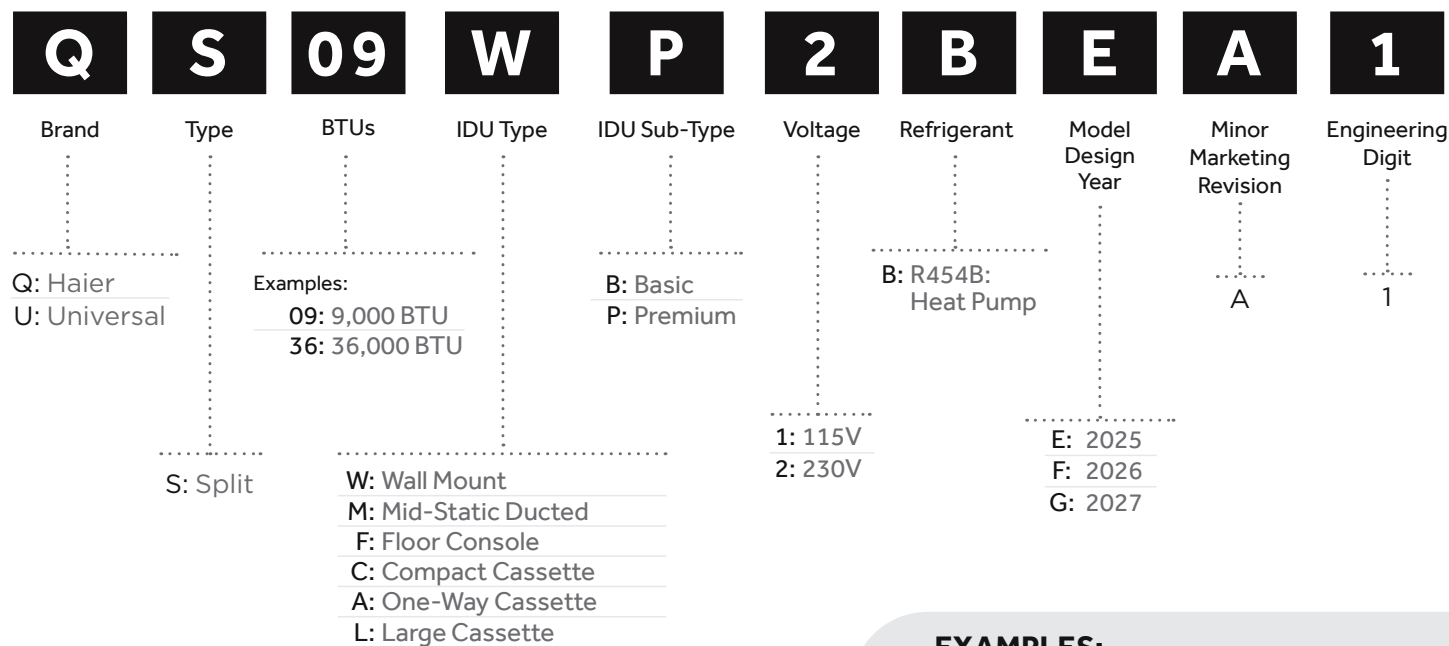
*Cassette Panel

● = Included ⊙ = Required, sold separately ○ = Optional; sold separately

See Outdoor Unit Accessory Compatibility Table for 5" Central Controller compatibility

Model Number **Nomenclature****Ductless Outdoor Unit Nomenclature****EXAMPLES:**

1Q12TE2BEA: Haier 12K Tempo Single Zone

Ductless Indoor Unit Nomenclature**EXAMPLES:**

QS09WB2BEA: Haier 9K Standard Highwall
 US12MB2BEA: Universal 12K Ducted

Notes



Haier



LIMITED WARRANTY

We take pride in our workmanship; our standard coverage includes a 5-year limited warranty on parts.

Additionally, our ductless systems qualify for a 10-year limited warranty on parts with registration. To receive the extended coverage, equipment must be registered within 60 days of installation. Please refer to the warranty documentation for complete details.



To register your equipment go to:
www.geappliancesairandwater.com/warranty



GE APPLIANCES
a Haier company

AIR&WATER
SOLUTIONS

