



THREADED FITTINGS & NIPPLES

Malleable Fittings

Steel Nipples

Merchant Steel

Cast Iron Fittings

Ductile Iron Fittings

Brass Fittings & Nipples

The Complete Package.



everflowsupplies.com | 908.436.1100

BRASS FITTINGS & NIPPLES

SPECIFICATION SHEET

125LB LEAD FREE BRONZE FITTINGS STANDARD SPECIFICATIONS

- **Material:** ASTM B 584; ASTM B 824
- **Dimensions:** Conforms to ANSI B 16.15, ANSI B 16.18, DIN 2856
- **Flanges Dimensions:** Conforms to ANSI B 16.24, MSS SP-106 DIN 2566, DIN 2642, DIN 86033
- **Union Dimensions:** Conforms to WW-U-516-B
- **Threads:** Conforms to ANSI / ASME B 1.20.1, BS 21, DIN 2999, ISO 228/1, ISO 7/1, JIS B 0202, JIS B 0203
- **Class:** 125 P.S.I
- **Tensile Strength:** 20.0 kg/mm. (Minimum)
- **Elongation:** 20% Minimum
- **Available:** 1/8" through 4"
- **Lead Free:** Conforms to NSF 61/372 and AB1953



SCH. 40 RED BRASS NIPPLES STANDARD SPECIFICATIONS

- **Material:** Conforms to ASTM B43 & B687
- **Threads:** Conforms to ANSI / ASME B 1.20.1
- **Tensile Strength:** Exceeds 303 Mpa
- **Yield Strength:** Exceeds 83 Mpa
- **Elongation:** 35% Minimum
- **Available:** 1/8" through 4" & Length up to 12 ft.
- **Lead Free:** Conforms to NSF 61/372 and AB1953



BRASS FITTINGS



- Bronze Fittings 125 / Flanges 150 • Lead Free Brass is NSF 61-4 and AB1953 Approved
- Stocked from 1/8" through 4" • 100% air tested • Manufactured at ISO 9001:2000 facilities



90° ELBOWS



SIZE	ITEM	INNER	MASTER
1/8"	BRNL0018-NL	200	800
1/4"	BRNL0014-NL	100	400
3/8"	BRNL0038-NL	75	300
1/2"	BRNL0012-NL	50	200
3/4"	BRNL0034-NL	25	100
1"	BRNL0100-NL	20	80
1-1/4"	BRNL0114-NL	25	50
1-1/2"	BRNL0112-NL	35	35
2"	BRNL0200-NL	20	20
2-1/2"	BRNL0212-NL	10	10
3"	BRNL0300-NL	6	6
4"	BRNL0400-NL	2	2



90° STREET ELBOWS



1/8"	BRSN0018-NL	200	800
1/4"	BRSN0014-NL	100	400
3/8"	BRSN0038-NL	60	240
1/2"	BRSN0012-NL	50	200
3/4"	BRSN0034-NL	25	100
1"	BRSN0100-NL	70	70
1-1/4"	BRSN0114-NL	20	40
1-1/2"	BRSN0112-NL	35	35
2"	BRSN0200-NL	20	20
2-1/2"	BRSN0212-NL	9	9
3"	BRSN0300-NL	6	6
4"	BRSN0400-NL	2	2



45° ELBOWS



1/8"	BRFL0018-NL	200	800
1/4"	BRFL0014-NL	120	480
3/8"	BRFL0038-NL	75	300
1/2"	BRFL0012-NL	50	200
3/4"	BRFL0034-NL	25	100
1"	BRFL0100-NL	90	90
1-1/4"	BRFL0114-NL	50	50
1-1/2"	BRFL0112-NL	40	40
2"	BRFL0200-NL	25	25
2-1/2"	BRFL0212-NL	12	12
3"	BRFL0300-NL	8	8
4"	BRFL0400-NL	3	3



REDUCING ELBOWS



SIZE	ITEM	INNER	MASTER
3/8" x 1/4"	BRRL0381-NL	90	360
1/2" x 1/8"	BRRL0120-NL	60	240
1/2" x 1/4"	BRRL0121-NL	60	240
1/2" x 3/8"	BRRL0122-NL	50	200
3/4" x 1/8"	BRRL0340-NL	40	160
3/4" x 1/4"	BRRL0341-NL	40	160
3/4" x 3/8"	BRRL0342-NL	35	140
3/4" x 1/2"	BRRL0343-NL	30	120
1" x 1/8"	BRRL1000-NL	30	120
1" x 1/4"	BRRL1001-NL	30	120
1" x 3/8"	BRRL1002-NL	25	100
1" x 1/2"	BRRL1003-NL	25	100
1" x 3/4"	BRRL1004-NL	25	50
1-1/4" x 1/2"	BRRL1141-NL	75	75
1-1/4" x 3/4"	BRRL1142-NL	65	65
1-1/4" x 1"	BRRL1143-NL	50	50
1-1/2" x 1/2"	BRRL1121-NL	55	55
1-1/2" x 3/4"	BRRL1122-NL	55	55
1-1/2" x 1"	BRRL1123-NL	45	45
1-1/2" x 1-1/4"	BRRL1124-NL	35	35
2" x 1/2"	BRRL2000-NL	10	40
2" x 3/4"	BRRL2001-NL	9	36
2" x 1"	BRRL2002-NL	28	28
2" x 1-1/4"	BRRL2003-NL	24	24
2" x 1-1/2"	BRRL2004-NL	20	20
2-1/2" x 1/2"	BRRL2120-NL	20	20
2-1/2" x 1-1/2"	BRRL2121-NL	12	12
2-1/2" x 2"	BRRL2122-NL	12	12
3" x 2"	BRRL3000-NL	8	8



45° STREET ELBOWS



1/8"	BRSF0018-NL	200	800
1/4"	BRSF0014-NL	100	400
3/8"	BRSF0038-NL	75	300
1/2"	BRSF0012-NL	75	300
3/4"	BRSF0034-NL	50	200
1"	BRSF0100-NL	25	100
1-1/4"	BRSF0114-NL	40	80
1-1/2"	BRSF0112-NL	50	50
2"	BRSF0200-NL	35	35
3"	BRSF0300-NL	8	8
4"	BRSF0400-NL	3	3





BRASS FITTINGS

- Bronze Fittings 125 / Flanges 150 • Lead Free Brass is NSF 61-4 and AB1953 Approved
- Stocked from 1/8" through 4" • 100% air tested • Manufactured at ISO 9001:2000 facilities



TEES



SIZE	ITEM	INNER	MASTER
1/8"	BRTE0018-NL	120	480
1/4"	BRTE0014-NL	75	300
3/8"	BRTE0038-NL	50	200
1/2"	BRTE0012-NL	25	100
3/4"	BRTE0034-NL	85	85
1"	BRTE0100-NL	50	50
1-1/4"	BRTE0114-NL	35	35
1-1/2"	BRTE0112-NL	24	24
2"	BRTE0200-NL	15	15
2-1/2"	BRTE0212-NL	8	8
3"	BRTE0300-NL	4	4
4"	BRTE0400-NL	3	3



REDUCING TEES 2 SIZES



1/2" x 1/4"	BRRT0120-NL	35	140
1/2" x 3/8"	BRRT0122-NL	35	140
3/4" x 1/4"	BRRT0340-NL	25	100
3/4" x 3/8"	BRRT0341-NL	25	100
3/4" x 1/2"	BRRT0342-NL	25	100
1" x 1/4"	BRRT1000-NL	40	80
1" x 3/8"	BRRT1001-NL	75	75
1" x 1/2"	BRRT1002-NL	75	75
1" x 3/4"	BRRT1006-NL	70	70
1-1/4" x 3/8"	BRRT1140-NL	45	45
1-1/4" x 1/2"	BRRT1141-NL	45	45
1-1/4" x 3/4"	BRRT1143-NL	40	40
1-1/4" x 1"	BRRT1145-NL	35	35
1-1/2" x 3/8"	BRRT1120-NL	1	1
1-1/2" x 1/2"	BRRT1121-NL	40	40
1-1/2" x 3/4"	BRRT1123-NL	30	30
1-1/2" x 1"	BRRT1124-NL	30	30
1-1/2" x 1-1/4"	BRRT1125-NL	26	26
2" x 3/8"	BRRT2000-NL	1	1
2" x 1/2"	BRRT2001-NL	20	20
2" x 3/4"	BRRT2003-NL	20	20
2" x 1"	BRRT2004-NL	16	16
2" x 1-1/4"	BRRT2005-NL	16	16
2" x 1-1/2"	BRRT2006-NL	16	16
2-1/2" x 1"	BRRT2125-NL	12	12
2-1/2" x 1-1/2"	BRRT2121-NL	8	8
2-1/2" x 2"	BRRT2122-NL	8	8



REDUCING TEES 3 SIZES



SIZE	ITEM	INNER	MASTER
3/4" x 1/2" x 1/2"	BRRT0343-NL	25	100
3/4" x 1/2" x 3/4"	BRRT0344-NL	25	100
1" x 1/2" x 1/2"	BRRT1003-NL	35	70
1" x 1/2" x 3/4"	BRRT1004-NL	35	70
1" x 1/2" x 1"	BRRT1005-NL	35	70
1" x 3/4" x 1/2"	BRRT1007-NL	35	70
1" x 3/4" x 3/4"	BRRT1008-NL	35	70
1" x 3/4" x 1"	BRRT1009-NL	35	70



BULL HEAD TEE



1/2" x 1/2" x 3/4"	BRBT0120-NL	25	100
3/4" x 3/4" x 1"	BRBT0340-NL	40	80
3/4" x 3/4" x 1-1/4"	BRBT0341-NL	1	1
1" x 1" x 1-1/4"	BRBT1000-NL	11	44



CROSS



1/8"	BRCR0018-NL	90	360
1/4"	BRCR0014-NL	60	240
3/8"	BRCR0038-NL	35	140
1/2"	BRCR0012-NL	25	100
3/4"	BRCR0034-NL	30	60
1"	BRCR0100-NL	40	40
1-1/4"	BRCR0114-NL	24	24
1-1/2"	BRCR0112-NL	22	22
2"	BRCR0200-NL	12	12



FLOOR FLANGE with Holes



1/2"	BRFF0012-NL	25	100
3/4"	BRFF0034-NL	20	80
1"	BRFF0100-NL	60	60
1-1/4"	BRFF0114-NL	50	50
1-1/2"	BRFF0112-NL	40	40
2"	BRFF0200-NL	25	25



BRASS FITTINGS



- Bronze Fittings 125 / Flanges 150 • Lead Free Brass is NSF 61-4 and AB1953 Approved
- Stocked from 1/8" through 4" • 100% air tested • Manufactured at ISO 9001:2000 facilities



UNIONS



SIZE	ITEM	INNER	MASTER
1/8"	BRUN0018-NL	90	360
1/4"	BRUN0014-NL	60	240
3/8"	BRUN0038-NL	30	120
1/2"	BRUN0012-NL	25	100
3/4"	BRUN0034-NL	20	80
1"	BRUN0100-NL	35	70
1-1/4"	BRUN0114-NL	35	35
1-1/2"	BRUN0112-NL	25	25
2"	BRUN0200-NL	18	18
2-1/2"	BRUN0212-NL	10	10
3"	BRUN0300-NL	8	8
4"	BRUN0400-NL	3	3



COUPLINGS



1/8"	BRCP0018-NL	200	800
1/4"	BRCP0014-NL	150	600
3/8"	BRCP0038-NL	100	400
1/2"	BRCP0012-NL	50	200
3/4"	BRCP0034-NL	40	160
1"	BRCP0100-NL	25	100
1-1/4"	BRCP0114-NL	75	75
1-1/2"	BRCP0112-NL	50	50
2"	BRCP0200-NL	30	30
2-1/2"	BRCP0212-NL	18	18
3"	BRCP0300-NL	12	12
4"	BRCP0400-NL	6	6



REDUCING COUPLINGS



1/4" x 1/8"	BRRC0140-NL	150	600
3/8" x 1/8"	BRRC0380-NL	100	400
3/8" x 1/4"	BRRC0381-NL	90	360
1/2" x 1/8"	BRRC0120-NL	75	300
1/2" x 1/4"	BRRC0121-NL	75	300
1/2" x 3/8"	BRRC0122-NL	70	280
3/4" x 1/4"	BRRC0340-NL	50	200
3/4" x 3/8"	BRRC0341-NL	45	180



Continued

REDUCING COUPLINGS



SIZE	ITEM	INNER	MASTER
3/4" x 1/2"	BRRC0342-NL	45	180
1" x 3/8"	BRRC1000-NL	30	120
1" x 1/2"	BRRC1001-NL	30	120
1" x 3/4"	BRRC1002-NL	25	100
1-1/4" x 1/2"	BRRC1140-NL	90	90
1-1/4" x 3/4"	BRRC1141-NL	90	90
1-1/4" x 1"	BRRC1142-NL	80	80
1-1/2" x 1/2"	BRRC1120-NL	75	75
1-1/2" x 3/4"	BRRC1121-NL	75	75
1-1/2" x 1"	BRRC1122-NL	65	65
1-1/2" x 1-1/4"	BRRC1123-NL	60	60
2" x 1/2"	BRRC2000-NL	40	40
2" x 3/4"	BRRC2001-NL	40	40
2" x 1"	BRRC2002-NL	40	40
2" x 1-1/4"	BRRC2003-NL	40	40
2" x 1-1/2"	BRRC2004-NL	35	35
2-1/2" x 1"	BRRC2120-NL	20	20
2-1/2" x 1-1/2"	BRRC2121-NL	20	20
2-1/2" x 2"	BRRC2122-NL	20	20
3" x 1"	BRRC3000-NL	16	16
3" x 1-1/2"	BRRC3001-NL	16	16
4" x 2"	BRRC4000-NL	6	6



CAPS



1/8"	BRCA0018-NL	300	1200
1/4"	BRCA0014-NL	250	1000
3/8"	BRCA0038-NL	150	600
1/2"	BRCA0012-NL	100	400
3/4"	BRCA0034-NL	50	200
1"	BRCA0100-NL	40	160
1-1/4"	BRCA0114-NL	25	100
1-1/2"	BRCA0112-NL	100	100
2"	BRCA0200-NL	70	70
2-1/2"	BRCA0212-NL	35	35
3"	BRCA0300-NL	25	25
4"	BRCA0400-NL	10	10





BRASS FITTINGS

- Bronze Fittings 125 / Flanges 150 • Lead Free Brass is NSF 61-4 and AB1953 Approved
- Stocked from 1/8" through 4" • 100% air tested • Manufactured at ISO 9001:2000 facilities



BRASS BUSHINGS



SIZE	ITEM	INNER	MASTER
1/4" x 1/8"	BRBU0140-NL	300	1200
3/8" x 1/8"	BRBU0380-NL	250	1000
3/8" x 1/4"	BRBU0381-NL	250	1000
1/2" x 1/8"	BRBU0120-NL	150	600
1/2" x 1/4"	BRBU0121-NL	150	600
1/2" x 3/8"	BRBU0122-NL	150	600
3/4" x 1/8"	BRBU0340-NL	90	360
3/4" x 1/4"	BRBU0341-NL	90	360
3/4" x 3/8"	BRBU0342-NL	90	360
3/4" x 1/2"	BRBU0343-NL	90	360
1" x 1/4"	BRBU1000-NL	50	200
1" x 3/8"	BRBU1001-NL	50	200
1" x 1/2"	BRBU1002-NL	50	200
1" x 3/4"	BRBU1003-NL	50	200
1-1/4" x 1/2"	BRBU1140-NL	40	160
1-1/4" x 3/4"	BRBU1141-NL	30	120
1-1/4" x 1"	BRBU1142-NL	30	120
1-1/2" x 1/4"	BRBU1120-NL	25	75
1-1/2" x 3/8"	BRBU1121-NL	25	75
1-1/2" x 1/2"	BRBU1122-NL	30	120
1-1/2" x 3/4"	BRBU1123-NL	30	120
1-1/2" x 1"	BRBU1124-NL	30	120
1-1/2" x 1-1/4"	BRBU1125-NL	30	120
2" x 1/2"	BRBU2000-NL	70	70
2" x 3/4"	BRBU2001-NL	70	70
2" x 1"	BRBU2002-NL	70	70
2" x 1-1/4"	BRBU2003-NL	65	65
2" x 1-1/2"	BRBU2004-NL	65	65
2-1/2" x 1"	BRBU2120-NL	40	40
2-1/2" x 1-1/4"	BRBU2121-NL	40	40
2-1/2" x 1-1/2"	BRBU2122-NL	40	40
2-1/2" x 2"	BRBU2123-NL	30	30
3" x 1-1/2"	BRBU3000-NL	15	15
3" x 2"	BRBU3001-NL	15	15
3" x 2-1/2"	BRBU3002-NL	15	15
3" x 1"	BRBU3004-NL	15	15
3" x 1-1/4"	BRBU3005-NL	15	15
4" x 2"	BRBU4000-NL	10	10
4" x 3"	BRBU4002-NL	12	12



PLUG CORED



SIZE	ITEM	INNER	MASTER
1/8"	BRPL0018-NL	300	3600
1/4"	BRPL0014-NL	150	1800
3/8"	BRPL0038-NL	100	1200
1/2"	BRPL0012-NL	150	600
3/4"	BRPL0034-NL	100	400
1"	BRPL0100-NL	50	200
1-1/4"	BRPL0114-NL	35	140
1-1/2"	BRPL0112-NL	30	120
2"	BRPL0200-NL	100	100
2-1/2"	BRPL0212-NL	30	30
3"	BRPL0300-NL	25	25
4"	BRPL0400-NL	15	15



PLUG SOLID



SIZE	ITEM	INNER	MASTER
1/8"	BRSP0018-NL	900	3600
1/4"	BRSP0014-NL	500	2000
3/8"	BRSP0038-NL	250	1000
1/2"	BRSP0012-NL	150	600
3/4"	BRSP0034-NL	100	400
1"	BRSP0100-NL	50	200
1-1/4"	BRSP0114-NL	35	140
1-1/2"	BRSP0112-NL	30	120
2"	BRSP0200-NL	100	100
2-1/2"	BRSP0212-NL	20	20
3"	BRSP0300-NL	8	8
4"	BRSP0400-NL	5	5



EXTENSION PIECE



SIZE	ITEM	INNER	MASTER
1/2"	BREP0012-NL	75	300
3/4"	BREP0034-NL	40	160



BRASS NIPPLES



- Lead Free Brass is NSF 61-4 and AB1953 Approved • Stocked from 1/8" through 4" • Available in lengths up to 12 ft.
- Conforms to ASTM B687 • NPT threads conform to ASME B1.20.1 • Meets all applicable ANSI standards



BRASS NIPPLES

Add Prefix: NPBR ____ To Part# Below:

Diam.	Close	1-1/2"	2"	2-1/2"	3"	3-1/2"	4"	4-1/2"	5"	5-1/2"	6"	7"	8"	9"	10"	11"	12"
1/8"	1800	1815	1820	1825	1830	1835	1840	1845	1850	1855	1860	1870	1880	1890	1810	1811	1812
1/4"	1400	1415	1420	1425	1430	1435	1440	1445	1450	1455	1460	1470	1480	1490	1410	1411	1412
3/8"	3800	3815	3820	3825	3830	3835	3840	3845	3850	3855	3860	3870	3880	3890	3810	3811	3812
1/2"	1200	1215	1220	1225	1230	1235	1240	1245	1250	1255	1260	1270	1280	1290	1210	1211	1212
3/4"	3400	3415	3420	3425	3430	3435	3440	3445	3450	3455	3460	3470	3480	3490	3410	3411	3412
1"	1000	-	1020	1025	1030	1035	1040	1045	1050	1055	1060	1070	1080	1090	1010	1011	1012
1-1/4"	1100	-	1120	1125	1130	1135	1140	1145	1150	1155	1160	1170	1180	1190	1110	1111	1112
1-1/2"	1500	-	1520	1525	1530	1535	1540	1545	1550	1555	1560	1570	1580	1590	1510	1511	1512
2"	2000	-	-	2025	2030	2035	2040	2045	2050	2055	2060	2070	2080	2090	2010	2011	2012
2-1/2"	2500	-	-	-	2530	2535	2540	2545	2550	2555	2560	2570	2580	2590	2510	2511	2512
3"	3000	-	-	-	3030	3035	3040	3045	3050	3055	3060	3070	3080	3090	3010	3011	3012
4"	4000	-	-	-	-	4035	4040	4045	4050	4055	4060	4070	4080	4090	4010	4011	4012

PACKAGING QUANTITIES

Size	Weight Per Each (LB)																
	Packing (Inner/Master)																
	Close	1-1/2"	2"	2-1/2"	3"	3-1/2"	4"	4-1/2"	5"	5-1/2"	6"	7"	8"	9"	10"	11"	12"
1/8"	0.01	0.03	0.04	0.05	0.06	0.07	0.08	0.09	0.10	0.11	0.12	0.14	0.16	0.19	0.21	0.23	0.25
	25/400	25/400	25/400	25/400	25/400	25/400	25/400	25/400	25/400	25/400	25/400	25/400	25/400	25/400	25/400	25/400	25/400
1/4"	0.02	0.05	0.06	0.08	0.10	0.12	0.14	0.16	0.18	0.20	0.21	0.25	0.29	0.33	0.36	0.40	0.44
	25/400	25/400	25/400	25/400	25/400	25/400	25/400	25/400	25/400	25/400	25/400	25/200	25/200	25/200	25/200	25/200	25/200
3/8"	0.04	0.06	0.09	0.12	0.14	0.17	0.19	0.22	0.25	0.27	0.30	0.35	0.40	0.46	0.51	0.56	0.61
	25/400	25/400	25/400	25/400	25/400	24/400	25/400	25/400	25/300	25/300	25/300	25/150	25/150	25/100	25/100	25/100	25/100
1/2"	0.06	0.08	0.12	0.16	0.20	0.24	0.28	0.32	0.36	0.40	0.43	0.51	0.59	0.67	0.75	0.82	0.90
	25/400	25/400	25/400	25/300	25/300	25/300	25/200	25/200	25/200	25/200	25/200	25/100	25/100	25/100	25/100	25/100	25/100
3/4"	0.10	0.11	0.16	0.21	0.27	0.32	0.37	0.43	0.48	0.53	0.58	0.69	0.77	0.90	1.01	1.11	1.22
	25/400	25/400	25/300	25/300	25/200	25/200	25/150	25/150	25/100	25/100	25/100	25/75	25/75	25/50	25/50	25/50	25/50
1"	0.15	-	0.23	0.30	0.38	0.45	0.52	0.60	0.67	0.75	0.82	0.97	1.12	1.27	1.41	1.56	1.71
	25/200	-	25/200	25/150	25/150	25/100	25/100	25/100	25/75	25/75	25/50	25/50	25/50	25/50	20/40	20/40	20/40
1-1/4"	0.25	-	0.33	0.44	0.55	0.66	0.77	0.88	0.99	1.10	1.21	1.43	1.65	1.86	2.08	2.30	2.52
	25/150	-	25/100	25/100	25/100	25/50	25/50	25/50	25/50	25/50	25/50	15/30	15/30	15/30	30	30	30
1-1/2"	0.29	-	0.36	0.49	0.62	0.75	0.88	1.01	1.14	1.27	1.40	1.66	1.92	2.18	2.45	2.71	2.97
	25/100	-	25/100	25/50	25/50	25/50	50	40	40	40	35	25	25	15	15	15	15
2"	0.47	-	-	0.64	0.81	0.98	1.16	1.33	1.50	1.67	1.84	2.19	2.53	2.87	3.22	3.56	3.90
	25/50	-	-	25/50	50	25	25	25	25	25	25	18	18	18	14	14	14
2-1/2"	0.84	-	-	-	1.09	1.34	1.59	1.84	2.09	2.34	2.59	3.08	3.58	4.08	4.58	5.08	5.58
	36	-	-	-	36	27	27	24	18	18	18	14	12	9	9	9	9
3"	1.26	-	-	-	1.53	1.88	2.24	2.60	2.95	3.31	3.67	4.38	5.09	5.81	6.52	7.23	7.95
	24	-	-	-	24	18	18	16	12	12	12	9	8	8	6	6	6
4"	2.20	-	-	-	2.33	2.86	3.39	3.92	4.45	4.98	5.51	6.57	7.63	8.68	9.74	10.80	11.86
	15	-	-	-	15	12	12	10	8	8	8	5	5	5	4	4	4

BRASS NIPPLE SETS

Size	Part #	Close	1-1/2"	2"	2-1/2"	3"	3-1/2"	4"	4-1/2"	5"	5-1/2"	6"	7"	8"	9"	10"	11"	12"	Total
1/2"	BRNS1200	-	-	-	-	-	-	-	-	-	-	-	-	-	-	-	-	-	11
3/4"	BRNS3400	-	-	-	-	-	-	-	-	-	-	-	-	-	-	-	-	-	11
1"	BRNS1000	-	-	-	-	-	-	-	-	-	-	-	-	-	-	-	-	-	10



BRASS PIGTAILS

Part #	Description	Qty
BRPA0014	1/4" Angle	10
BRPS0014	1/4" Straight	10



MALLEABLE FITTINGS

SPECIFICATION SHEET

150LB STANDARD SPECIFICATIONS

- **Material:** Conforms to ASTM A 197 (CUPOLA)
- **Dimensions:** Conforms to ANSI B 16.3, B 16.4, B 16.39 & SI 225
- **Union Dimensions:** Conforms to ASME B 16.39
- **Threads:** Conforms to ANSI / ASME B 1.20, BS 21
- **Class:** 150 P.S.I.
- **Tensile Strength:** 28.4 kg/mm. (Minimum)
- **Elongation:** 5% Minimum
- **Zinc Coating:** SI 918, Conforms to ASTM A 153
- **Working Pressure:** 10kg/cm (150 P.S.I.) at 350°F
- **Available:** 1/8" through 6"
- **Approvals:** Third Party Approved



300LB STANDARD SPECIFICATIONS

- **Material:** Conforms to ASTM A 197 (CUPOLA)
- **Dimensions:** Conforms to ANSI B 16.3, B 16.4, B 16.39 & SI 225
- **Union Dimensions:** Conforms to ASME B 16.39
- **Threads:** Conforms to ANSI / ASME B 1.20, BS 21
- **Class:** 300 P.S.I.
- **Tensile Strength:** 28.4 kg/mm. (Minimum)
- **Elongation:** 5% Minimum
- **Zinc Coating:** SI 918, Conforms to ASTM A 153
- **Working Pressure:** 10 kg/cm (300 P.S.I.) at 550°F
- **Approvals:** Third Party Approved



150LB MALLEABLE FITTINGS

• 150 LB • Black and Galvanized • 1/8" - 6" Diameter • 100% Pressure Tested • ASTM A197
• ANSI/ASME B16.3 • ANSI/ASME B16.14 • UL/ULC and FM Approved • ISO 9001: 2000



ELBOWS 90°



SIZE	BLACK	GALVANIZED	INNER	MASTER
1/8"	BMNL0018	GMNL0018	50	600
1/4"	BMNL0014	GMNL0014	35	420
3/8"	BMNL0038	GMNL0038	90	360
1/2"	BMNL0012	GMNL0012	50	200
3/4"	BMNL0034	GMNL0034	35	105
1"	BMNL0100	GMNL0100	20	60
1-1/4"	BMNL0114	GMNL0114	20	40
1-1/2"	BMNL0112	GMNL0112	15	30
2"	BMNL0200	GMNL0200	8	16
2-1/2"	BMNL0212	GMNL0212	1	12
3"	BMNL0300	GMNL0300	1	8
4"	BMNL0400	GMNL0400	1	2
5"	BMNL0500	GMNL0500	1	2
6"	BMNL0600	GMNL0600	1	1



ELBOWS 45°



1/8"	BMFF0018	GMFF0018	50	600
1/4"	BMFF0014	GMFF0014	30	360
3/8"	BMFF0038	GMFF0038	75	300
1/2"	BMFF0012	GMFF0012	50	200
3/4"	BMFF0034	GMFF0034	40	120
1"	BMFF0100	GMFF0100	20	60
1-1/4"	BMFF0114	GMFF0114	20	40
1-1/2"	BMFF0112	GMFF0112	10	30
2"	BMFF0200	GMFF0200	12	24
2-1/2"	BMFF0212	GMFF0212	1	12
3"	BMFF0300	GMFF0300	1	10
4"	BMFF0400	GMFF0400	2	4
5"	BMFF0500	GMFF0500	1	2
6"	BMFF0600	GMFF0600	1	1

150LB MALLEABLE FITTINGS

• 150 LB • Black and Galvanized • 1/8" - 6" Diameter • 100% Pressure Tested • ASTM A197
• ANSI/ASME B16.3 • ANSI/ASME B16.14 • UL/ULC and FM Approved • ISO 9001: 2000



STREET ELBOW 90°



SIZE	BLACK	GALVANIZED	INNER	MASTER
1/8"	BMSN0018	GMSN0018	60	720
1/4"	BMSN0014	GMSN0014	35	420
3/8"	BMSN0038	GMSN0038	60	240
1/2"	BMSN0012	GMSN0012	60	180
3/4"	BMSN0034	GMSN0034	35	105
3/4" x 1/2"	BMSN3412	-	-	-
1"	BMSN0100	GMSN0100	45	90
1-1/4"	BMSN0114	GMSN0114	25	50
1-1/2"	BMSN0112	GMSN0112	9	27
2"	BMSN0200	GMSN0200	8	16
2-1/2"	BMSN0212	GMSN0212	5	10
3"	BMSN0300	GMSN0300	1	8
4"	BMSN0400	GMSN0400	1	4
6"	BMSN0600	GMSN0600	1	1



STREET ELBOW 45°



1/8"	BMSF0018	GMSF0018	70	840
1/4"	BMSF0014	GMSF0014	40	480
3/8"	BMSF0038	GMSF0038	100	400
1/2"	BMSF0012	GMSF0012	75	225
3/4"	BMSF0034	GMSF0034	40	120
1"	BMSF0100	GMSF0100	25	75
1-1/4"	BMSF0114	GMSF0114	10	40
1-1/2"	BMSF0112	GMSF0112	10	30
2"	BMSF0200	GMSF0200	12	24
2-1/2"	BMSF0212	GMSF0212	6	12
3"	BMSF0300	GMSF0300	3	6
4"	BMSF0400	GMSF0400	1	4



REDUCING ELBOW 90°



1/4" x 1/8"	BMRL0140	GMRL0140	40	480
3/8" x 1/8"	BMRL0380	GMRL0380	105	420
3/8" x 1/4"	BMRL0381	GMRL0381	90	360
1/2" x 1/8"	BMRL0120	GMRL0120	60	240
1/2" x 1/4"	BMRL0121	GMRL0121	60	240
1/2" x 3/8"	BMRL0122	GMRL0122	60	240

150LB MALLEABLE FITTINGS

• 150 LB • Black and Galvanized • 1/8" - 6" Diameter • 100% Pressure Tested • ASTM A197
• ANSI/ASME B16.3 • ANSI/ASME B16.14 • UL/ULC and FM Approved • ISO 9001: 2000



REDUCING ELBOWS 90° - continued



SIZE	BLACK	GALVANIZED	INNER	MASTER
3/4" x 1/8"	BMRL0340	GMRL0340	40	160
3/4" x 1/4"	BMRL0341	GMRL0341	40	160
3/4" x 3/8"	BMRL0342	GMRL0342	40	160
3/4" x 1/2"	BMRL0343	GMRL0343	40	160
1" x 1/4"	BMRL1000	GMRL1000	25	100
1" x 3/8"	BMRL1001	GMRL1001	25	100
1" x 1/2"	BMRL1002	GMRL1002	25	100
1" x 3/4"	BMRL1003	GMRL1003	50	100
1-1/4" x 1/2"	BMRL1140	GMRL1140	20	80
1-1/4" x 3/4"	BMRL1141	GMRL1141	15	60
1-1/4" x 1"	BMRL1142	GMRL1142	10	40
1-1/2" x 1/2"	BMRL1120	GMRL1120	15	60
1-1/2" x 3/4"	BMRL1121	GMRL1121	10	40
1-1/2" x 1"	BMRL1122	GMRL1122	10	40
1-1/2" x 1-1/4"	BMRL1123	GMRL1123	15	30
2" x 1/2"	BMRL2000	GMRL2000	10	40
2" x 3/4"	BMRL2001	GMRL2001	9	36
2" x 1"	BMRL2002	GMRL2002	14	28
2" x 1-1/4"	BMRL2003	GMRL2003	10	20
2" x 1-1/2"	BMRL2004	GMRL2004	10	20
2-1/2" x 1/2"	BMRL2120	GMRL2120	8	16
2-1/2" x 3/4"	BMRL2121	GMRL2121	8	16
2-1/2" x 1"	BMRL2122	GMRL2122	8	16
2-1/2" x 1-1/4"	BMRL2123	GMRL2123	8	16
2-1/2" x 1-1/2"	BMRL2124	GMRL2124	6	12
2-1/2" x 2"	BMRL2125	GMRL2125	6	12
3" x 1-1/2"	BMRL3000	GMRL3000	4	8
3" x 2"	BMRL3001	GMRL3001	4	8
3" x 2-1/2"	BMRL3002	GMRL3002	4	8
4" x 2"	BMRL4000	GMRL4000	2	4
4" x 2-1/2"	BMRL4001	GMRL4001	1	2
4" x 3"	BMRL4002	GMRL4002	1	2

150LB MALLEABLE FITTINGS

• 150 LB • Black and Galvanized • 1/8" - 6" Diameter • 100% Pressure Tested • ASTM A197
• ANSI/ASME B16.3 • ANSI/ASME B16.14 • UL/ULC and FM Approved • ISO 9001: 2000



SIZE	BLACK	GALVANIZED	INNER	MASTER
1/8"	BMTE0018	GMTE0018	120	480
1/4"	BMTE0014	GMTE0014	75	300
3/8"	BMTE0038	GMTE0038	45	180
1/2"	BMTE0012	GMTE0012	40	120
3/4"	BMTE0034	GMTE0034	35	70
1"	BMTE0100	GMTE0100	20	40
1-1/4"	BMTE0114	GMTE0114	14	28
1-1/2"	BMTE0112	GMTE0112	12	24
2"	BMTE0200	GMTE0200	8	16
2-1/2"	BMTE0212	GMTE0212	4	8
3"	BMTE0300	GMTE0300	6	6
4"	BMTE0400	GMTE0400	1	2
5"	BMTE0500	GMTE0500	1	2
6"	BMTE0600	GMTE0600	1	1



1/4" x 1/8"	BMRT0140	GMRT0140	25	300
3/8" x 1/8"	BMRT0380	GMRT0380	90	360
3/8" x 1/4"	BMRT0381	GMRT0381	60	240
1/2" x 1/8"	BMRT0120	GMRT0120	40	160
1/2" x 1/4"	BMRT0121	GMRT0121	40	160
1/2" x 3/8"	BMRT0122	GMRT0122	40	160
3/4" x 1/4"	BMRT0340	GMRT0340	25	100
3/4" x 3/8"	BMRT0341	GMRT0341	25	100
3/4" x 1/2"	BMRT0342	GMRT0342	20	80
1" x 1/4"	BMRT1000	GMRT1000	20	80
1" x 3/8"	BMRT1001	GMRT1001	15	60
1" x 1/2"	BMRT1002	GMRT1002	15	60
1" x 3/4"	BMRT1009	GMRT1009	12	48
1-1/4" x 3/8"	BMRT1400	GMRT1400	20	40
1-1/4" x 1/2"	BMRT1401	GMRT1401	20	40
1-1/4" x 3/4"	BMRT1402	GMRT1402	20	40
1-1/4" x 1"	BMRT1403	GMRT1403	20	40
1-1/2" x 3/8"	BMRT1200	GMRT1200	18	36

150LB MALLEABLE FITTINGS

• 150 LB • Black and Galvanized • 1/8" - 6" Diameter • 100% Pressure Tested • ASTM A197
• ANSI/ASME B16.3 • ANSI/ASME B16.14 • UL/ULC and FM Approved • ISO 9001: 2000

MALLEABLE FITTINGS



REDUCING TEE 2 SIZES - continued



SIZE	BLACK	GALVANIZED	INNER	MASTER
1-1/2" x 1/2"	BMRT1201	GMRT1201	18	36
1-1/2" x 3/4"	BMRT1202	GMRT1202	15	30
1-1/2" x 1"	BMRT1203	GMRT1203	10	30
1-1/2" x 1-1/4"	BMRT1204	GMRT1204	12	24
2" x 3/8"	BMRT2000	GMRT2000	10	20
2" x 1/2"	BMRT2001	GMRT2001	10	20
2" x 3/4"	BMRT2002	GMRT2002	10	20
2" x 1"	BMRT2003	GMRT2003	10	20
2" x 1-1/4"	BMRT2004	GMRT2004	8	16
2" x 1-1/2"	BMRT2005	GMRT2005	8	16
2-1/2" x 1/2"	BMRT2120	GMRT2120	6	12
2-1/2" x 3/4"	BMRT2121	GMRT2121	6	12
2-1/2" x 1"	BMRT2122	GMRT2122	5	10
2-1/2" x 1-1/4"	BMRT2123	GMRT2123	5	10
2-1/2" x 1-1/2"	BMRT2124	GMRT2124	5	10
2-1/2" x 2"	BMRT2125	GMRT2125	4	8
3" x 1/2"	BMRT3000	GMRT3000	3	6
3" x 3/4"	BMRT3001	GMRT3001	3	6
3" x 1"	BMRT3002	GMRT3002	3	6
3" x 1-1/4"	BMRT3003	GMRT3003	3	6
3" x 1-1/2"	BMRT3004	GMRT3004	3	6
3" x 2"	BMRT3005	GMRT3005	3	6
3" x 2-1/2"	BMRT3006	GMRT3006	3	6
4" x 1"	BMRT4000	GMRT4000	1	3
4" x 1-1/4"	BMRT4001	GMRT4001	1	3
4" x 1-1/2"	BMRT4002	GMRT4002	1	3
4" x 2"	BMRT4003	GMRT4003	1	3
4" x 2-1/2"	BMRT4004	GMRT4004	1	3
4" x 3"	BMRT4005	GMRT4005	1	2

150LB MALLEABLE FITTINGS

• 150 LB • Black and Galvanized • 1/8" - 6" Diameter • 100% Pressure Tested • ASTM A197
• ANSI/ASME B16.3 • ANSI/ASME B16.14 • UL/ULC and FM Approved • ISO 9001: 2000



REDUCING TEE 3 SIZES



SIZE	BLACK	GALVANIZED	INNER	MASTER
1/2" x 1/4" x 1/2"	BMRT0347	-	40	160
3/4" x 3/8" x 3/4"	BMRT0343	GMRT0343	1	2
3/4" x 1/2" x 1/2"	BMRT0344	GMRT0344	25	100
3/4" x 1/2" x 3/4"	BMRT0345	GMRT0345	20	80
3/4" x 1/2" x 1"	BMRT0346	GMRT0346	18	72
1" x 1/2" x 1/2"	BMRT1003	GMRT1003	20	80
1" x 1/2" x 3/4"	BMRT1004	GMRT1004	20	80
1" x 1/2" x 1"	BMRT1005	GMRT1005	15	60
1" x 3/4" x 1/2"	BMRT1006	GMRT1006	20	80
1" x 3/4" x 3/4"	BMRT1007	GMRT1007	15	60
1" x 3/4" x 1"	BMRT1008	GMRT1008	30	60
1-1/4" x 1/2" x 1/2"	BMRT1404	GMRT1404	25	50
1-1/4" x 1/2" x 3/4"	BMRT1405	GMRT1405	25	50
1-1/4" x 1/2" x 1"	BMRT1406	GMRT1406	20	40
1-1/4" x 1/2" x 1-1/4"	BMRT1407	GMRT1407	20	40
1-1/4" x 3/4" x 1/2"	BMRT1408	GMRT1408	10	40
1-1/4" x 3/4" x 3/4"	BMRT1409	GMRT1409	10	40
1-1/4" x 3/4" x 1"	BMRT1410	GMRT1410	10	40
1-1/4" x 3/4" x 1-1/4"	BMRT1411	GMRT1411	20	40
1-1/4" x 1" x 1/2"	BMRT1412	GMRT1412	20	40
1-1/4" x 1" x 3/4"	BMRT1413	GMRT1413	20	40
1-1/4" x 1" x 1"	BMRT1414	GMRT1414	20	40
1-1/4" x 1" x 1-1/4"	BMRT1415	GMRT1415	15	30
1-1/4" x 1" x 1-1/2"	BMRT1416	GMRT1416	15	30
1-1/2" x 1/2" x 3/4"	BMRT1205	GMRT1205	12	48
1-1/2" x 1/2" x 1"	BMRT1206	GMRT1206	18	36
1-1/2" x 1/2" x 1-1/4"	BMRT1207	GMRT1207	12	24
1-1/2" x 1/2" x 1-1/2"	BMRT1208	GMRT1208	12	24
1-1/2" x 3/4" x 1/2"	BMRT1209	GMRT1209	15	30
1-1/2" x 3/4" x 3/4"	BMRT1210	GMRT1210	15	30
1-1/2" x 3/4" x 1"	BMRT1211	GMRT1211	12	24

150LB MALLEABLE FITTINGS

• 150 LB • Black and Galvanized • 1/8" - 6" Diameter • 100% Pressure Tested • ASTM A197
• ANSI/ASME B16.3 • ANSI/ASME B16.14 • UL/ULC and FM Approved • ISO 9001: 2000



REDUCING TEE 3 SIZES - continued



SIZE	BLACK	GALVANIZED	INNER	MASTER
1-1/2" x 3/4" x 1-1/4"	BMRT1212	GMRT1212	12	24
1-1/2" x 3/4" x 1-1/2"	BMRT1213	GMRT1213	12	24
1-1/2" x 1" x 1/2"	BMRT1214	GMRT1214	15	30
1-1/2" x 1" x 3/4"	BMRT1215	GMRT1215	15	30
1-1/2" x 1" x 1"	BMRT1216	GMRT1216	15	30
1-1/2" x 1" x 1-1/4"	BMRT1217	GMRT1217	12	24
1-1/2" x 1" x 1-1/2"	BMRT1218	GMRT1218	12	24
1-1/2" x 1-1/4" x 1/2"	BMRT1219	GMRT1219	12	24
1-1/2" x 1-1/4" x 3/4"	BMRT1220	GMRT1220	12	24
1-1/2" x 1-1/4" x 1"	BMRT1221	GMRT1221	12	24
1-1/2" x 1-1/4" x 1-1/4"	BMRT1222	GMRT1222	12	24
1-1/2" x 1-1/4" x 1-1/2"	BMRT1223	GMRT1223	12	24
1-1/2" x 1-1/4" x 2"	BMRT1224	GMRT1224	12	24
2" x 1/2" x 2"	BMRT2006	GMRT2006	8	16
2" x 3/4" x 3/4"	BMRT2007	GMRT2007	12	24
2" x 3/4" x 2"	BMRT2008	GMRT2008	8	16
2" x 1" x 1"	BMRT2009	GMRT2009	12	24
2" x 1" x 1-1/2"	BMRT2010	GMRT2010	10	20
2" x 1" x 2"	BMRT2011	GMRT2011	8	16
2" x 1-1/4" x 1"	BMRT2012	GMRT2012	8	16
2" x 1-1/4" x 1-1/4"	BMRT2013	GMRT2013	8	16
2" x 1-1/4" x 1-1/2"	BMRT2014	GMRT2014	8	16
2" x 1-1/4" x 2"	BMRT2015	GMRT2015	8	16
2" x 1-1/2" x 3/4"	BMRT2016	GMRT2016	10	20
2" x 1-1/2" x 1"	BMRT2017	GMRT2017	10	20
2" x 1-1/2" x 1-1/4"	BMRT2018	GMRT2018	8	16
2" x 1-1/2" x 1-1/2"	BMRT2019	GMRT2019	8	16
2" x 1-1/2" x 2"	BMRT2020	GMRT2020	8	16
2-1/2" x 1-1/2" x 2-1/2"	BMRT2126	GMRT2126	4	8
2-1/2" x 2" x 2"	BMRT2127	GMRT2127	4	8
2-1/2" x 2" x 2-1/2"	BMRT2128	GMRT2128	4	8

150LB MALLEABLE FITTINGS

• 150 LB • Black and Galvanized • 1/8" - 6" Diameter • 100% Pressure Tested • ASTM A197
• ANSI/ASME B16.3 • ANSI/ASME B16.14 • UL/ULC and FM Approved • ISO 9001: 2000



BULL HEAD TEE



SIZE	BLACK	GALVANIZED	INNER	MASTER
1/2" x 1/2" x 3/4"	BMBT0120	GMBT0120	30	120
1/2" x 1/2" x 1"	BMBT0121	GMBT0121	25	100
3/4" x 3/4" x 1"	BMBT0340	GMBT0340	40	80
3/4" x 3/4" x 1-1/4"	BMBT0341	GMBT0341	40	80
1" x 1" x 1-1/4"	BMBT1000	GMBT1000	11	44
1" x 1" x 1-1/2"	BMBT1001	GMBT1001	9	36
1" x 1" x 2"	BMBT1002	GMBT1002	12	24
1-1/4" x 1-1/4" x 1-1/2"	BMBT1400	GMBT1400	12	24
1-1/4" x 1-1/4" x 2"	BMBT1401	GMBT1401	12	24
1-1/2" x 1-1/2" x 2"	BMBT1200	GMBT1200	10	20
2" x 2" x 2-1/2"	BMBT2000	GMBT2000	6	12



CROSS



1/8"	BMCR0018	GMCR0018	60	240
1/4"	BMCR0014	GMCR0014	60	240
3/8"	BMCR0038	GMCR0038	50	150
1/2"	BMCR0012	GMCR0012	30	90
3/4"	BMCR0034	GMCR0034	20	60
1"	BMCR0100	GMCR0100	15	30
1-1/4"	BMCR0114	GMCR0114	10	20
1-1/2"	BMCR0112	GMCR0112	8	16
2"	BMCR0200	GMCR0200	5	10
2-1/2"	BMCR0212	GMCR0212	3	6
3"	BMCR0300	GMCR0300	2	4
4"	BMCR0400	GMCR0400	1	2
6"	BMCR0600	GMCR0600	1	1



BANDED COUPLING



1/8"	BMCPL018	GMCP018	70	840
1/4"	BMCPL014	GMCP014	40	480
3/8"	BMCPL038	GMCP038	40	480
1/2"	BMCPL012	GMCP012	60	240
3/4"	BMCPL034	GMCP034	50	150
1"	BMCPL100	GMCP100	25	100
1-1/4"	BMCPL114	GMCP114	16	64
1-1/2"	BMCPL112	GMCP112	18	36

150LB MALLEABLE FITTINGS

• 150 LB • Black and Galvanized • 1/8" - 6" Diameter • 100% Pressure Tested • ASTM A197
• ANSI/ASME B16.3 • ANSI/ASME B16.14 • UL/ULC and FM Approved • ISO 9001: 2000

BANDED COUPLING - continued



SIZE	BLACK	GALVANIZED	INNER	MASTER
2"	BMCP200	GMCP200	12	24
2-1/2"	BMCP212	GMCP212	8	16
3"	BMCP300	GMCP300	12	12
4"	BMCP400	GMCP400	3	6
5"	BMCP500	GMCP500	1	2
6"	BMCP600	GMCP600	0	2

REDUCING COUPLING



1/4" x 1/8"	BMRC0140	GMRC0140	50	600
3/8" x 1/8"	BMRC0380	GMRC0380	35	420
3/8" x 1/4"	BMRC0381	GMRC0381	30	360
1/2" x 1/8"	BMRC0120	GMRC0120	75	300
1/2" x 1/4"	BMRC0121	GMRC0121	75	300
1/2" x 3/8"	BMRC0122	GMRC0122	60	240
3/4" x 1/8"	BMRC0340	GMRC0340	70	210
3/4" x 1/4"	BMRC0341	GMRC0341	45	180
3/4" x 3/8"	BMRC0342	GMRC0342	45	180
3/4" x 1/2"	BMRC0343	GMRC0343	60	180
1" x 1/4"	BMRC1000	GMRC1000	45	135
1" x 3/8"	BMRC1001	GMRC1001	30	120
1" x 1/2"	BMRC1002	GMRC1002	30	120
1" x 3/4"	BMRC1003	GMRC1003	25	100
1-1/4" x 3/8"	BMRC1140	GMRC1140	25	75
1-1/4" x 1/2"	BMRC1141	GMRC1141	25	75
1-1/4" x 3/4"	BMRC1142	GMRC1142	25	75
1-1/4" x 1"	BMRC1143	GMRC1143	15	60
1-1/2" x 3/8"	BMRC1120	GMRC1120	30	60
1-1/2" x 1/2"	BMRC1121	GMRC1121	20	60
1-1/2" x 3/4"	BMRC1122	GMRC1122	15	60
1-1/2" x 1"	BMRC1123	GMRC1123	25	50
1-1/2" x 1-1/4"	BMRC1124	GMRC1124	12	48
2" x 3/8"	BMRC2000	GMRC2000	12	36
2" x 1/2"	BMRC2001	GMRC2001	12	36
2" x 3/4"	BMRC2002	GMRC2002	12	36
2" x 1"	BMRC2003	GMRC2003	12	36
2" x 1-1/4"	BMRC2004	GMRC2004	9	27
2" x 1-1/2"	BMRC2005	GMRC2005	9	27

150LB MALLEABLE FITTINGS

• 150 LB • Black and Galvanized • 1/8" - 6" Diameter • 100% Pressure Tested • ASTM A197
• ANSI/ASME B16.3 • ANSI/ASME B16.14 • UL/ULC and FM Approved • ISO 9001: 2000

REDUCING COUPLING - continued



SIZE	BLACK	GALVANIZED	INNER	MASTER
2-1/2" x 1/2"	BMRC2120	GMRC2120	10	20
2-1/2" x 3/4"	BMRC2121	GMRC2121	10	20
2-1/2" x 1"	BMRC2122	GMRC2122	10	20
2-1/2" x 1-1/4"	BMRC2123	GMRC2123	10	20
2-1/2" x 1-1/2"	BMRC2124	GMRC2124	7	14
2-1/2" x 2"	BMRC2125	GMRC2125	7	14
3" x 3/4"	BMRC3000	GMRC3000	7	14
3" x 1"	BMRC3001	GMRC3001	6	12
3" x 1-1/4"	BMRC3002	GMRC3002	6	12
3" x 1-1/2"	BMRC3003	GMRC3003	6	12
3" x 2"	BMRC3004	GMRC3004	6	12
3" x 2-1/2"	BMRC3005	GMRC3005	5	10
4" x 1"	BMRC4000	GMRC4000	3	6
4" x 1-1/4"	BMRC4001	GMRC4001	3	6
4" x 1-1/2"	BMRC4002	GMRC4002	3	6
4" x 2"	BMRC4003	GMRC4003	3	6
4" x 2-1/2"	BMRC4004	GMRC4004	3	6
4" x 3"	BMRC4005	GMRC4005	3	6
6" x 3"	BMRC6000	GMRC6000	1	2
6" x 4"	BMRC6001	GMRC6001	1	2

LEFT RIGHT COUPLING



1/2"	BMLR0012	GMLR0012	60	240
3/4"	BMLR0034	GMLR0034	50	150
1"	BMLR0100	GMLR0100	25	100
1-1/4"	BMLR0114	GMLR0114	16	64
1-1/2"	BMLR0112	GMLR0112	18	36
2"	BMLR0200	GMLR0200	12	24
2-1/2"	BMLR0212	GMLR0212	8	16
3"	BMLR0300	GMLR0300	6	12
4"	BMLR0400	GMLR0400	6	6

150LB MALLEABLE FITTINGS

• 150 LB • Black and Galvanized • 1/8" - 6" Diameter • 100% Pressure Tested • ASTM A197
• ANSI/ASME B16.3 • ANSI/ASME B16.14 • UL/ULC and FM Approved • ISO 9001: 2000



UNION



SIZE	BLACK	GALVANIZED	INNER	MASTER
1/8"	BMUN0018	GMUN0018	60	240
1/4"	BMUN0014	GMUN0014	20	240
3/8"	BMUN0038	GMUN0038	40	160
1/2"	BMUN0012	GMUN0012	50	100
3/4"	BMUN0034	GMUN0034	35	70
3/4" x 1/2"	BMUN3412	GMUN3412	1	1
1"	BMUN0100	GMUN0100	20	40
1-1/4"	BMUN0114	GMUN0114	15	30
1-1/2"	BMUN0112	GMUN0112	10	20
2"	BMUN0200	GMUN0200	6	12
2-1/2"	BMUN0212	GMUN0212	4	8
3"	BMUN0300	GMUN0300	4	8
4"	BMUN0400	GMUN0400	2	4



CAP



1/8"	BMCP0018	GMCP0018	120	1440
1/4"	BMCP0014	GMCP0014	80	960
3/8"	BMCP0038	GMCP0038	60	720
1/2"	BMCP0012	GMCP0012	75	300
3/4"	BMCP0034	GMCP0034	40	160
1"	BMCP0100	GMCP0100	25	100
1-1/4"	BMCP0114	GMCP0114	20	80
1-1/2"	BMCP0112	GMCP0112	18	54
2"	BMCP0200	GMCP0200	12	36
2-1/2"	BMCP0212	GMCP0212	20	40
3"	BMCP0300	GMCP0300	8	24
3-1/2"	BMCP0312	GMCP0312	6	12
4"	BMCP0400	GMCP0400	6	12
5"	BMCP0500	GMCP0500	5	10
6"	BMCP0600	GMCP0600	2	4



150LB MALLEABLE FITTINGS

• 150 LB • Black and Galvanized • 1/8" - 6" Diameter • 100% Pressure Tested • ASTM A197
• ANSI/ASME B16.3 • ANSI/ASME B16.14 • UL/ULC and FM Approved • ISO 9001: 2000



PLUG



SIZE	BLACK	GALVANIZED	INNER	MASTER
1/8"	BMPL0180	GMPL0180	300	3600
1/4"	BMPL0140	GMPL0140	150	1800
3/8"	BMPL0380	GMPL0380	120	1440
1/2"	BMPL0120	GMPL0120	50	600
3/4"	BMPL0340	GMPL0340	30	360
1"	BMPL1000	GMPL1000	20	240
1-1/4"	BMPL1140	GMPL1140	40	120
1-1/2"	BMPL1120	GMPL1120	30	90
2"	BMPL2000	GMPL2000	20	60
2-1/2"	BMPL2120	GMPL2120	16	32
3"	BMPL3000	GMPL3000	16	32
4"	BMPL4000	GMPL4000	6	12
5"	BMPL5000	GMPL5000	5	10
6"	BMPL6000	GMPL6000	10	10
1" SOLID	BMPL1000S	-	20	240



HEX BUSHING



1/4" x 1/8"	BMBU0140	GMBU0140	120	1440
3/8" x 1/8"	BMBU0380	GMBU0380	75	900
3/8" x 1/4"	BMBU0381	GMBU0381	75	900
1/2" x 1/8"	BMBU0120	GMBU0120	150	600
1/2" x 1/4"	BMBU0121	GMBU0121	150	600
1/2" x 3/8"	BMBU0122	GMBU0122	150	600
3/4" x 1/8"	BMBU0340	GMBU0340	75	300
3/4" x 1/4"	BMBU0341	GMBU0341	75	300
3/4" x 3/8"	BMBU0342	GMBU0342	75	300
3/4" x 1/2"	BMBU0343	GMBU0343	75	300
1" x 1/8"	BMBU1000	GMBU1000	50	200
1" x 1/4"	BMBU1001	GMBU1001	50	200
1" x 3/8"	BMBU1002	GMBU1002	50	200
1" x 1/2"	BMBU1003	GMBU1003	50	200
1" x 3/4"	BMBU1004	GMBU1004	50	200
1-1/4" x 1/8"	BMBU1140	GMBU1140	30	120
1-1/4" x 1/4"	BMBU1141	GMBU1141	30	120
1-1/4" x 3/8"	BMBU1142	GMBU1142	30	120
1-1/4" x 1/2"	BMBU1143	GMBU1143	30	120

150LB MALLEABLE FITTINGS

• 150 LB • Black and Galvanized • 1/8" - 6" Diameter • 100% Pressure Tested • ASTM A197
• ANSI/ASME B16.3 • ANSI/ASME B16.14 • UL/ULC and FM Approved • ISO 9001: 2000



HEX BUSHING - continued



SIZE	BLACK	GALVANIZED	INNER	MASTER
1-1/4" x 3/4"	BMBU1144	GMBU1144	30	120
1-1/4" x 1"	BMBU1145	GMBU1145	30	120
1-1/2" x 1/8"	BMBU1120	GMBU1120	25	75
1-1/2" x 1/4"	BMBU1121	GMBU1121	25	75
1-1/2" x 3/8"	BMBU1122	GMBU1122	25	75
1-1/2" x 1/2"	BMBU1123	GMBU1123	25	75
1-1/2" x 3/4"	BMBU1124	GMBU1124	25	75
1-1/2" x 1"	BMBU1125	GMBU1125	25	75
1-1/2" x 1-1/4"	BMBU1126	GMBU1126	25	75
2" x 1/4"	BMBU2000	GMBU2000	20	60
2" x 3/8"	BMBU2001	GMBU2001	20	60
2" x 1/2"	BMBU2002	GMBU2002	20	60
2" x 3/4"	BMBU2003	GMBU2003	20	60
2" x 1"	BMBU2004	GMBU2004	20	60
2" x 1-1/4"	BMBU2005	GMBU2005	20	60
2" x 1-1/2"	BMBU2006	GMBU2006	20	60
2-1/2" x 1/2"	BMBU2120	GMBU2120	15	30
2-1/2" x 3/4"	BMBU2121	GMBU2121	15	30
2-1/2" x 1"	BMBU2122	GMBU2122	15	30
2-1/2" x 1-1/4"	BMBU2123	GMBU2123	15	30
2-1/2" x 1-1/2"	BMBU2124	GMBU2124	15	30
2"-1/2 x 2"	BMBU2125	GMBU2125	15	30
3" x 3/4"	BMBU3000	GMBU3000	12	24
3" x 1"	BMBU3001	GMBU3001	12	24
3" x 1-1/4"	BMBU3002	GMBU3002	12	24
3" x 1-1/2"	BMBU3003	GMBU3003	12	24
3" x 2"	BMBU3004	GMBU3004	12	24
3" x 2-1/2"	BMBU3005	GMBU3005	12	24
3-1/2" x 1-1/2"	BMBU3120	GMBU3120	12	48
3-1/2" x 3"	BMBU3121	GMBU3121	8	16
4" x 3/4"	BMBU4000	GMBU4000	5	10
4" x 1"	BMBU4001	GMBU4001	5	10
4" x 1-1/4"	BMBU4002	GMBU4002	5	10
4" x 1-1/2"	BMBU4003	GMBU4003	5	10

150LB MALLEABLE FITTINGS

• 150 LB • Black and Galvanized • 1/8" - 6" Diameter • 100% Pressure Tested • ASTM A197
• ANSI/ASME B16.3 • ANSI/ASME B16.14 • UL/ULC and FM Approved • ISO 9001: 2000



HEX BUSHING - continued



SIZE	BLACK	GALVANIZED	INNER	MASTER
4" x 2"	BMBU4004	GMBU4004	5	10
4" x 2-1/2"	BMBU4005	GMBU4005	5	10
4" x 3"	BMBU4006	GMBU4006	5	10
4" x 3-1/2"	BMBU4007	GMBU4007	8	16
5" x 3"	BMBU5000	GMBU5000	2	4
5" x 4"	BMBU5001	GMBU5001	2	4
6" x 2"	BMBU6000	GMBU6000	2	4
6" x 3"	BMBU6001	GMBU6001	2	4
6" x 4"	BMBU6002	GMBU6002	2	4
6" x 5"	BMBU6003	GMBU6003	2	4



EXTENSION PIECE



1/2"	BMEP0012	GMEP0012	75	300
3/4"	BMEP0034	GMEP0034	40	160
1"	BMEP0100	GMEP0100	30	90
1-1/4"	BMEP0114	GMEP0114	30	60
1-1/2"	BMEP0112	GMEP0112	20	40
2"	BMEP0200	GMEP0200	15	30



FLOOR FLANGE WITH HOLES



1/8"	BMFL0018	GMFL0018	1	1
1/4"	BMFL0014	GMFL0014	30	90
3/8"	BMFL0038	GMFL0038	25	75
1/2"	BMFL0012	GMFL0012	25	50
3/4"	BMFL0034	GMFL0034	15	45
1"	BMFL0100	GMFL0100	15	30
1-1/4"	BMFL0114	GMFL0114	10	30
1-1/2"	BMFL0112	GMFL0112	8	24
2"	BMFL0200	GMFL0200	8	16

300LB XH MALLEABLE FITTINGS

• Class 300 • Black and Galvanized • ANSI B1.20.1 • ANSI B16.3 • ANSI B16.14 • ASTM A153
• ASTM A197 • ASME B16.39 • All Fittings Are 100% Pressure Tested • ISO 9001: 2000



XH ELBOWS 90°



SIZE	BLACK	GALVANIZED	INNER	MASTER
1/4"	BXNL0014	GXNL0014	50	300
3/8"	BXNL0038	GXNL0038	60	120
1/2"	BXNL0012	GXNL0012	60	120
3/4"	BXNL0034	GXNL0034	50	100
1"	BXNL0100	GXNL0100	20	40
1-1/4"	BXNL0114	GXNL0114	14	28
1-1/2"	BXNL0112	GXNL0112	12	24
2"	BXNL0200	GXNL0200	6	12
2-1/2"	BXNL0212	GXNL0212	8	8
3"	BXNL0300	GXNL0300	4	4



XH ELBOWS 45°



1/4"	BXFL0014	GXFL0014	75	150
3/8"	BXFL0038	GXFL0038	100	200
1/2"	BXFL0012	GXFL0012	60	120
3/4"	BXFL0034	GXFL0034	60	120
1"	BXFL0100	GXFL0100	30	60
1-1/4"	BXFL0114	GXFL0114	12	24
1-1/2"	BXFL0112	GXFL0112	12	24
2"	BXFL0200	GXFL0200	6	12
2-1/2"	BXFL0212	GXFL0212	4	8
3"	BXFL0300	GXFL0300	4	4



XH STREET ELBOW 90°



1/4"	BXSN0014	GXSN0014	140	280
3/8"	BXSN0038	GXSN0038	120	240
1/2"	BXSN0012	GXSN0012	60	120
3/4"	BXSN0034	GXSN0034	40	80
1"	BXSN0100	GXSN0100	30	60
1-1/4"	BXSN0114	GXSN0114	18	36
1-1/2"	BXSN0112	GXSN0112	12	24
2"	BXSN0200	GXSN0200	6	12

300LB XH MALLEABLE FITTINGS

• Class 300 • Black and Galvanized • ANSI B1.20.1 • ANSI B16.3 • ANSI B16.14 • ASTM A153
• ASTM A197 • ASME B16.39 • All Fittings Are 100% Pressure Tested • ISO 9001: 2000

XH TEE



SIZE	BLACK	GALVANIZED	INNER	MASTER
1/4"	BXTE0014	GXTE0014	120	240
3/8"	BXTE0038	GXTE0038	90	180
1/2"	BXTE0012	GXTE0012	60	120
3/4"	BXTE0034	GXTE0034	20	40
1"	BXTE0100	GXTE0100	20	40
1-1/4"	BXTE0114	GXTE0114	12	24
1-1/2"	BXTE0112	GXTE0112	8	16
2"	BXTE0200	GXTE0200	5	10
2-1/2"	BXTE0212	GXTE0212	3	6
3"	BXTE0300	GXTE0300	4	4

XH REDUCING TEE



3/4" x 1/2"	BXRT0340	GXRT0340	20	40
1" x 1/2"	BXRT1000	GXRT1000	20	40
1" x 3/4"	BXRT1001	GXRT1001	20	40
1-1/4" x 3/4"	BXRT1140	GXRT1140	12	24
1-1/4" x 1"	BXRT1141	GXRT1141	12	24
1-1/2" x 1"	BXRT1120	GXRT1120	8	16
1-1/2" x 1-1/4"	BXRT1121	GXRT1121	8	16
2" x 1-1/4"	BXRT2000	GXRT2000	5	10
2" x 1-1/2"	BXRT2001	GXRT2001	5	10

XH COUPLING



1/4"	BXCPL014	GXCPL014	200	400
3/8"	BXCPL038	GXCPL038	100	200
1/2"	BXCPL012	GXCPL012	60	120
3/4"	BXCPL034	GXCPL034	40	80
1"	BXCPL100	GXCPL100	40	80
1-1/4"	BXCPL114	GXCPL114	12	24
1-1/2"	BXCPL112	GXCPL112	12	24
2"	BXCPL200	GXCPL200	8	16
2-1/2"	BXCPL212	GXCPL212	4	8
3"	BXCPL300	GXCPL300	4	8

XH REDUCING COUPLING



1/2" x 1/4"	BXRC0120	GXRC0120	100	200
1/2" x 3/8"	BXRC0121	GXRC0121	100	200
3/4" x 3/8"	BXRC0340	GXRC0340	30	60
3/4" x 1/2"	BXRC0341	GXRC0341	45	90

300LB XH MALLEABLE FITTINGS

• Class 300 • Black and Galvanized • ANSI B1.20.1 • ANSI B16.3 • ANSI B16.14 • ASTM A153
• ASTM A197 • ASME B16.39 • All Fittings Are 100% Pressure Tested • ISO 9001: 2000

XH REDUCING COUPLING - continued



SIZE	BLACK	GALVANIZED	INNER	MASTER
1" x 1/2"	BXRC1000	GXRC1000	50	100
1" x 3/4"	BXRC1001	GXRC1001	50	100
1-1/4" x 1/2"	BXRC1140	GXRC1140	25	50
1-1/4" x 3/4"	BXRC1141	GXRC1141	30	60
1-1/4" x 1"	BXRC1142	GXRC1142	30	60
1-1/2" x 1/2"	BXRC1120	GXRC1120	30	60
1-1/2" x 3/4"	BXRC1121	GXRC1121	30	60
1-1/2" x 1"	BXRC1122	GXRC1122	20	40
1-1/2" x 1-1/4"	BXRC1123	GXRC1123	20	40
2" x 1/2"	BXRC2000	GXRC2000	16	32
2" x 3/4"	BXRC2001	GXRC2001	16	32
2" x 1"	BXRC2002	GXRC2002	16	32
2" x 1-1/4"	BXRC2003	GXRC2003	12	24
2" x 1-1/2"	BXRC2004	GXRC2004	12	24
2-1/2" x 2"	BXRC2121	GXRC2121	4	8



XH UNION



1/8"	BXUN0018	GXUN0018	100	200
1/4"	BXUN0014	GXUN0014	100	200
3/8"	BXUN0038	GXUN0038	60	120
1/2"	BXUN0012	GXUN0012	40	80
3/4"	BXUN0034	GXUN0034	20	40
1"	BXUN0100	GXUN0100	25	50
1-1/4"	BXUN0114	GXUN0114	15	30
1-1/2"	BXUN0112	GXUN0112	12	24
2"	BXUN0200	GXUN0200	6	12
2-1/2"	BXUN0212	GXUN0212	4	8
3"	BXUN0300	GXUN0300	4	8
4"	BXUN0400	GXUN0400	4	4



XH CAP



1/4"	BXCA0014	GXCA0014	120	240
3/8"	BXCA0038	GXCA0038	75	150
1/2"	BXCA0012	GXCA0012	60	120
3/4"	BXCA0034	GXCA0034	40	80
1"	BXCA0100	GXCA0100	25	50
1-1/4"	BXCA0114	GXCA0114	20	40
1-1/2"	BXCA0112	GXCA0112	20	40
2"	BXCA0200	GXCA0200	12	24

STEEL PIPE COUPLINGS

- Meets or exceeds all applicable ASTM, ANSI and API standards
- Merchant Couplings stocked 1/8" - 6" diameters

STANDARD STEEL MERCHANT COUPLINGS

STRAIGHT TAPPED



SIZE	BLACK	GALVANIZED	INNER	MASTER
1/8"	MCBS0018	MGSC0018	100	1200
1/4"	MCBS0014	MGSC0014	50	600
3/8"	MCBS0038	MGSC0038	50	600
1/2"	MCBS0012	MGSC0012	25	200
3/4"	MCBS0034	MGSC0034	50	200
1"	MCBS0100	MGSC0100	30	120
1-1/4"	MCBS0114	MGSC0114	24	96
1-1/2"	MCBS0112	MGSC0112	25	50
2"	MCBS0200	MGSC0200	18	36

TAPER TAPPED

2-1/2"	MCTT0212	MGCTT212	4	32
3"	MCTT0300	MGCTT300	4	16
3-1/2"	MCTT0312	MGCTT312	4	16
4"	MCTT0400	MGCTT400	3	9
5"	MCTT0500	MGCTT500	1	1
6"	MCTT0600	MGCTT600	2	4

STANDARD STEEL MERCHANT HALF COUPLINGS



STRAIGHT TAPPED

SIZE	BLACK	INNER	MASTER
1/8"	MBHC0018	100	1200
1/4"	MBHC0014	50	600
3/8"	MBHC0038	50	600
1/2"	MBHC0012	50	400
3/4"	MBHC0034	100	400
1"	MBHC0100	60	240
1-1/4"	MBHC0114	48	192
1-1/2"	MBHC0112	50	100
2"	MBHC0200	36	72

TAPER TAPPED

2-1/2"	MTTHC212	-	64
3"	MTTHC300	-	32
4"	MTTHC400	-	18
5"	MTTHC500	-	8
6"	MTTHC600	-	6

STEEL PLUGS & BUSHINGS

Black and Galvanized • Meets or exceeds all applicable ASTM, ANSI and API Standards
Steel Plugs Stocked 1/8" - 3/4" • Hex Bushings in variety of reducing sizes

STEEL MERCHANT HEX BUSHING



SIZE	BLACK	GALVANIZED	INNER	MASTER
1/4" X 1/8"	MHBB1418	MHBG1418	-	100
3/8" X 1/8"	MHBB3818	MHBG3818	-	100
3/8" X 1/4"	MHBB3814	MHBG3814	-	100
1/2" X 1/8"	MHBB1218	MHBG1218	-	100
1/2" X 1/4"	MHBB1214	MHBG1214	-	100
1/2" X 3/8"	MHBB1238	MHBG1238	-	100
3/4" X 1/8"	MHBB3418	MHBG3418	-	100
3/4" X 1/4"	MHBB3414	MHBG3414	-	100
3/4" X 3/8"	MHBB3438	MHBG3438	-	100
3/4" X 1/2"	MHBB3412	MHBG3412	-	100

STEEL MERCHANT SQUARE HEAD PLUGS



SIZE	BLACK	GALVANIZED	INNER	MASTER
1/8"	MSPB1800	MSPG1800	-	100
1/4"	MSPB1400	MSPG1400	-	100
3/8"	MSPB3800	MSPG3800	-	100
1/2"	MSPB1200	MSPG1200	-	100
3/4"	MSPB3400	MSPG3400	-	100

STEEL NIPPLES - SCH 40 WELDED

- Schedule 40 • Black and Galvanized • Meets or exceeds ASTM and ANSI Standards
- Stocked from 1/8" through 6" Diameters • Various assortments including slant 66 packs in stock



SCHEDULE 40 BLACK STANDARD WELDED NIPPLES

Add Prefix: **NPBL** ____ To Part# Below:

Diam.	Close	1-1/2"	2"	2-1/2"	3"	3-1/2"	4"	4-1/2"	5"	5-1/2"	6"	7"	8"	9"	10"	11"	12"
1/8"	1800	1815	1820	1825	1830	1835	1840	1845	1850	1855	1860	1870	1880	1890	1810	1811	1812
1/4"	1400	1415	1420	1425	1430	1435	1440	1445	1450	1455	1460	1470	1480	1490	1410	1411	1412
3/8"	3800	3815	3820	3825	3830	3835	3840	3845	3850	3855	3860	3870	3880	3890	3810	3811	3812
1/2"	1200	1215	1220	1225	1230	1235	1240	1245	1250	1255	1260	1270	1280	1290	1210	1211	1212
3/4"	3400	3415	3420	3425	3430	3435	3440	3445	3450	3455	3460	3470	3480	3490	3410	3411	3412
1"	1000	-	1020	1025	1030	1035	1040	1045	1050	1055	1060	1070	1080	1090	1010	1011	1012
1-1/4"	1100	-	1120	1125	1130	1135	1140	1145	1150	1155	1160	1170	1180	1190	1110	1111	1112
1-1/2"	1500	-	1520	1525	1530	1535	1540	1545	1550	1555	1560	1570	1580	1590	1510	1511	1512
2"	2000	-	-	2025	2030	2035	2040	2045	2050	2055	2060	2070	2080	2090	2010	2011	2012
2-1/2"	2500	-	-	-	2530	2535	2540	2545	2550	2555	2560	2570	2580	2590	2510	2511	2512
3"	3000	-	-	-	3030	3035	3040	3045	3050	3055	3060	3070	3080	3090	3010	3011	3012
3-1/2"	3500	-	-	-	-	-	3540	3545	3550	3555	3560	3570	3580	3590	3510	3511	3512
4"	4000	-	-	-	-	-	4040	4045	4050	4055	4060	4070	4080	4090	4010	4011	4012
5"	5000	-	-	-	-	-	5040	5045	5050	5055	5060	5070	5080	5092	5010	5011	5012
6"	6000	-	-	-	-	-	6040	6045	6050	6055	6060	6070	6080	6090	6010	6011	6012



SCHEDULE 40 GALVANIZED STANDARD WELDED NIPPLES

Add Prefix: **NPGL** ____ To Part# Below:

Diam.	Close	1-1/2"	2"	2-1/2"	3"	3-1/2"	4"	4-1/2"	5"	5-1/2"	6"	7"	8"	9"	10"	11"	12"
1/8"	1800	1815	1820	1825	1830	1835	1840	1845	1850	1855	1860	1870	1880	1890	1810	1811	1812
1/4"	1400	1415	1420	1425	1430	1435	1440	1445	1450	1455	1460	1470	1480	1490	1410	1411	1412
3/8"	3800	3815	3820	3825	3830	3835	3840	3845	3850	3855	3860	3870	3880	3890	3810	3811	3812
1/2"	1200	1215	1220	1225	1230	1235	1240	1245	1250	1255	1260	1270	1280	1290	1210	1211	1212
3/4"	3400	3415	3420	3425	3430	3435	3440	3445	3450	3455	3460	3470	3480	3490	3410	3411	3412
1"	1000	-	1020	1025	1030	1035	1040	1045	1050	1055	1060	1070	1080	1090	1010	1011	1012
1-1/4"	1100	-	1120	1125	1130	1135	1140	1145	1150	1155	1160	1170	1180	1190	1110	1111	1112
1-1/2"	1500	-	1520	1525	1530	1535	1540	1545	1550	1555	1560	1570	1580	1590	1510	1511	1512
2"	2000	-	-	2025	2030	2035	2040	2045	2050	2055	2060	2070	2080	2090	2010	2011	2012
2-1/2"	2500	-	-	-	2530	2535	2540	2545	2550	2555	2560	2570	2580	2590	2510	2511	2512
3"	3000	-	-	-	3030	3035	3040	3045	3050	3055	3060	3070	3080	3090	3010	3011	3012
3-1/2"	3500	-	-	-	-	-	3540	3545	3550	3555	3560	3570	3580	3590	3510	3511	3512
4"	4000	-	-	-	-	-	4040	4045	4050	4055	4060	4070	4080	4090	4010	4011	4012
5"	5000	-	-	-	-	-	5040	5045	5050	5055	5060	5070	5080	5092	5010	5011	5012
6"	6000	-	-	-	-	-	6040	6045	6050	6055	6060	6070	6080	6090	6010	6011	6012

LEFT / RIGHT NIPPLES

Size	4" Black	4" Galvanized	Quantity
1/2"	NRLB0124	NRLG0124	25/200
3/4"	NRLB0344	NRLG0344	25/150
1"	NRLB1004	NRLG1004	25/100
1-1/4"	NRLB1144	NRLG1144	25/50
1-1/2"	NRLB1124	NRLG1124	25/50
2"	NRLB2044	NRLG2044	25/25
2-1/2"	NRLB2045	NRLG2045	14/28
3"	NRLB2046	NRLG2046	9/18
4"	NRLB2047	NRLG2047	12/12

STEEL PIGTAIL - BLACK

Size	4" Black	Quantity
1/4"	BLPT0014	60/120

STEEL NIPPLES - SCH 40 SETS

- Schedule 40 • Black and Galvanized • Meets or exceeds ASTM and ANSI Standards
- Various assortments including slant 66 packs in stock



SCHEDULE 40 STANDARD RUN ASSORTMENTS

Size	Pieces	Black Price	Galvanized Price	Close	1-1/2"	2"	2-1/2"	3"	3-1/2"	4"	4-1/2"	5"	5-1/2"	6"
1/2"	11	NPBS1200	NPGS1200	1	1	1	1	1	1	1	1	1	1	1
3/4"	11	NPBS3400	NPGS3400	1	1	1	1	1	1	1	1	1	1	1
1"	10	NPBS1000	NPGS1000	1	-	1	1	1	1	1	1	1	1	1
1-1/4"	10	NPBS1140	NPGS1140	1	-	1	1	1	1	1	1	1	1	1
1-1/2"	10	NPBS1120	NPGS1120	1	-	1	1	1	1	1	1	1	1	1
2"	9	NPBS2000	NPGS2000	1	-	-	1	1	1	1	1	1	1	1



SCHEDULE 40 FULL RUN ASSORTMENTS

Size	Pieces	Black Part #	Galvanized Part #	Close	1-1/2"	2"	2-1/2"	3"	3-1/2"	4"	4-1/2"	5"	5-1/2"	6"	7"	8"	9"	10"	11"	12"
1/2"	17	NPBF1200	NPGF1200	1	1	1	1	1	1	1	1	1	1	1	1	1	1	1	1	1
3/4"	17	NPBF3400	NPGF3400	1	1	1	1	1	1	1	1	1	1	1	1	1	1	1	1	1
1"	17	NPBF1000	NPGF1000	1	-	1	1	1	1	1	1	1	1	1	1	1	1	1	1	1
1-1/4"	17	NPBF1140	NPGF1140	1	-	1	1	1	1	1	1	1	1	1	1	1	1	1	1	1
1-1/2"	17	NPBF1120	NPGF1120	1	-	1	1	1	1	1	1	1	1	1	1	1	1	1	1	1
2"	17	NPBF2000	NPGF2000	1	-	-	1	1	1	1	1	1	1	1	1	1	1	1	1	1

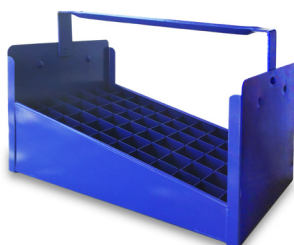


SCHEDULE 40 SLANT TRAYS B ASSORTMENTS

Size	Pieces	Black Part #	Galvanized Part #	Close	1-1/2"	2"	2-1/2"	3"	3-1/2"	4"	4-1/2"	5"	5-1/2"	6"
1/2"	66	NPBA1200	NPGA1200	6	6	6	6	6	6	6	6	6	6	6
3/4"	66	NPBA3400	NPGA3400	6	6	6	6	6	6	6	6	6	6	6
1"	60	NPBA1000	NPGA1000	6	-	6	6	6	6	6	6	6	6	6

STEEL NIPPLE CADDY TRAY

Model #	Size	Description
NTT12	1/2"	77 Pcs. Capacity
NTT34	3/4"	66 Pcs. Capacity
NTT1	1"	60 Pcs. Capacity



STEEL NIPPLES - SCH 40 PRE-CUT

- Schedule 40 • Black and Galvanized • Meets or exceeds ASTM and ANSI Standards
- Stocked from 1/4" through 4" Diameters

SCHEDULE 40 BLACK PRE-CUT PIPE

Add Prefix: **PCBL** ____ To Part# Below:

Diam.	14"	16"	18"	24"	30"	36"	42"	48"	60"	72"	120"
1/4"	-	-	1418	1424	1430	1436	-	1448	1460	1472	1412
3/8"	-	-	3818	3824	3830	3836	-	3848	3860	3872	3812
1/2"	1214	1216	1218	1224	1230	1236	-	1248	1260	1272	1212
3/4"	3414	3416	3418	3424	3430	3436	-	3448	3460	3472	3412
1"	-	-	1018	1024	1030	1036	-	1048	1060	1072	1012
1-1/4"	-	-	1118	1124	1130	1136	1142	1148	1160	1172	1112
1-1/2"	-	-	1518	1524	1530	1536	-	1548	1560	1572	1512
2"	-	-	2018	2024	2030	2036	2042	2048	2060	2072	2012
2-1/2"	-	-	2518	2524	2530	2536	-	2548	2560	2572	-
3"	-	-	3018	3024	3030	3036	-	3048	3060	3072	-
4"	-	-	4018	4024	4030	4036	-	4048	4060	4072	-

SCHEDULE 40 GALVANIZED PRE-CUT PIPE

Add Prefix: **PCGL** ____ To Part# Below:

Diam.	14"	16"	18"	24"	30"	36"	42"	48"	60"	72"	120"
1/4"	-	-	1418	1424	1430	1436	-	1448	1460	1472	1412
3/8"	-	-	3818	3824	3830	3836	-	3848	3860	3872	3812
1/2"	-	-	1218	1224	1230	1236	-	1248	1260	1272	1212
3/4"	3414	3416	3418	3424	3430	3436	-	3448	3460	3472	3412
1"	-	-	1018	1024	1030	1036	-	1048	1060	1072	1012
1-1/4"	-	-	1118	1124	1130	1136	-	1148	1160	1172	1112
1-1/2"	-	-	1518	1524	1530	1536	1542	1548	1560	1572	1512
2"	-	-	2018	2024	2030	2036	2042	2048	2060	2072	2012
2-1/2"	-	-	2518	2524	2530	2536	-	2548	2560	2572	-
3"	-	-	3018	3024	3030	3036	-	3048	3060	3072	-
4"	-	-	4018	4024	4030	4036	-	4048	4060	4072	-

PRE CUT PIPE DISPLAY STAND

Model #	Description
PCBL-STAND	PRE-CUT PIPE DISPLAY RACK



STEEL NIPPLES XH - SCH 80 WELDED

- Schedule 80 • Black and Galvanized • Meets or exceeds ASTM and ANSI Standards
- Stocked from 1/8" through 4" Diameters • Available in Lengths up to 12 ft.



SCHEDULE 80 EXTRA HEAVY WELDED BLACK NIPPLES

Add Prefix: **NPXB** ____ To Part# Below:

Diam.	Close	1-1/2"	2"	2-1/2"	3"	3-1/2"	4"	4-1/2"	5"	5-1/2"	6"	7"	8"	9"	10"	11"	12"
1/8"	1800	1815	1820	1825	1830	1835	1840	1845	1850	1855	1860	1870	1880	1890	1810	1811	1812
1/4"	1400	1415	1420	1425	1430	1435	1440	1445	1450	1455	1460	1470	1480	1490	1410	1411	1412
3/8"	3800	3815	3820	3825	3830	3835	3840	3845	3850	3855	3860	3870	3880	3890	3810	3811	3812
1/2"	1200	1215	1220	1225	1230	1235	1240	1245	1250	1255	1260	1270	1280	1290	1210	1211	1212
3/4"	3400	3415	3420	3425	3430	3435	3440	3445	3450	3455	3460	3470	3480	3490	3410	3411	3412
1"	1000	-	1020	1025	1030	1035	1040	1045	1050	1055	1060	1070	1080	1090	1010	1011	1012
1-1/4"	1100	-	1120	1125	1130	1135	1140	1145	1150	1155	1160	1170	1180	1190	1110	1111	1112
1-1/2"	1500	-	1520	1525	1530	1535	1540	1545	1550	1555	1560	1570	1580	1590	1510	1511	1512
2"	2000	-	-	2025	2030	2035	2040	2045	2050	2055	2060	2070	2080	2090	2010	2011	2012
2-1/2"	2500	-	-	-	2530	2535	2540	2545	2550	2555	2560	2570	2580	2590	2510	2511	2512
3"	3000	-	-	-	3030	-	3040	3045	3050	3055	3060	3070	3080	3090	3010	3011	3012
4"	4000	-	-	-	-	-	4040	4045	4050	4055	4060	4070	4080	4090	4010	4011	4012



SCHEDULE 80 EXTRA HEAVY WELDED GALVANIZED NIPPLES

Add Prefix: **NPXG** ____ To Part# Below:

Diam.	Close	1-1/2"	2"	2-1/2"	3"	3-1/2"	4"	4-1/2"	5"	5-1/2"	6"
1/2"	1200	1215	1220	1225	1230	1235	1240	1245	1250	1255	1260
3/4"	3400	3415	3420	3425	3430	3435	3440	3445	3450	3455	3460
1"	1000	-	1020	1025	1030	1035	1040	1045	1050	1055	1060
1-1/4"	1100	-	1120	1125	1130	1135	1140	1145	1150	1155	1160
1-1/2"	1500	-	1520	1525	1530	1535	1540	1545	1550	1555	1560
2"	2000	-	-	-	2030	2035	2040	2045	2050	2055	2060



SCHEDULE 80 EXTRA HEAVY WELDED RUN ASSORTMENTS

Size	Pieces	Black Part #	Galvanized Part #	Close	1-1/2"	2"	2-1/2"	3"	3-1/2"	4"	4-1/2"	5"	5-1/2"	6"
1/2"	11	NPXS1200-K	NPXS1200	1	1	1	1	1	1	1	1	1	1	1
3/4"	11	NPXS3400-K	NPXS3400	1	1	1	1	1	1	1	1	1	1	1
1"	10	NPXS1000-K	NPXS1000	1	-	1	1	1	1	1	1	1	1	1
1-1/4"	10	NPXS1140-K	NPXS1140	1	-	1	1	1	1	1	1	1	1	1
1-1/2"	10	NPXS1120-K	NPXS1120	1	-	1	1	1	1	1	1	1	1	1
2"	9	NPXS2000-K	NPXS2000	1	-	-	1	1	1	1	1	1	1	1

STEEL NIPPLES XH - SCH 80 SEAMLESS

- Schedule 80 • Black and Galvanized • Meets or exceeds ASTM and ANSI Standards
- Stocked from 1/8" through 4" Diameters • Available in Lengths up to 12 ft.



SCHEDULE 80 EXTRA HEAVY SEAMLESS NIPPLES

Add Prefix: **BXHN** ____ To Part# Below:

Diam.	Close	1-1/2"	2"	2-1/2"	3"	3-1/2"	4"	4-1/2"	5"	5-1/2"	6"	7"	8"	9"	10"	11"	12"
1/8"	1800	1815	1820	1825	1830	1835	1840	1845	1850	1855	1860	1870	1880	1890	1810	1811	1812
1/4"	1400	1415	1420	1425	1430	1435	1440	1445	1450	1455	1460	1470	1480	1490	1410	1411	1412
3/8"	3800	3815	3820	3825	3830	3835	3840	3845	3850	3855	3860	3870	3880	3890	3810	3811	3812
1/2"	1200	1215	1220	1225	1230	1235	1240	1245	1250	1255	1260	1270	1280	1290	1210	1211	1212
3/4"	3400	3415	3420	3425	3430	3435	3440	3445	3450	3455	3460	3470	3480	3490	3410	3411	3412
1"	1000	-	1020	1025	1030	1035	1040	1045	1050	1055	1060	1070	1080	1090	1010	1011	1012
1-1/4"	1100	-	1120	1125	1130	1135	1140	1145	1150	1155	1160	1170	1180	1190	1110	1111	1112
1-1/2"	1500	-	1520	1525	1530	1535	1540	1545	1550	1555	1560	1570	1580	1590	1510	1511	1512
2"	2000	-	-	2025	2030	2035	2040	2045	2050	2055	2060	2070	2080	2090	2010	2011	2012
2-1/2"	2500	-	-	-	2530	2535	2540	2545	2550	2555	2560	2570	2580	2590	2510	2511	2512
3"	3000	-	-	-	3030	3035	3040	3045	3050	3055	3060	3070	3080	3090	3010	3011	3012
4"	4000	-	-	-	-	-	4040	4045	4050	4055	4060	4070	4080	4090	4010	4011	4012



SCHEDULE 80 EXTRA HEAVY SEAMLESS STANDARD RUN ASSORTMENTS

Size	Pieces	Part #	Close	1-1/2"	2"	2-1/2"	3"	3-1/2"	4"	4-1/2"	5"	5-1/2"	6"
1/2"	11	BXHS1200	1	1	1	1	1	1	1	1	1	1	1
3/4"	11	BXHS3400	1	1	1	1	1	1	1	1	1	1	1
1"	10	BXHS1000	1	-	1	1	1	1	1	1	1	1	1
1-1/4"	10	BXHS1140	1	-	1	1	1	1	1	1	1	1	1
1-1/2"	10	BXHS1120	1	-	1	1	1	1	1	1	1	1	1
2"	9	BXHS2000	1	-	-	1	1	1	1	1	1	1	1



STEEL NIPPLES PACKING INFO

PACKING QUANTITIES

Size	Close	1-1/2"	2"	2-1/2"	3"	3-1/2"	4"	4-1/2"	5"	5-1/2"	6"	7"	8"	9"	10"	11"	12"
1/8"	25/400	25/400	25/400	25/400	25/400	25/400	25/400	25/400	25/400	25/400	25/400	25/400	25/200	25/200	25/200	25/200	25/200
1/4"	25/400	25/400	25/400	25/400	25/400	25/400	25/400	25/400	25/400	25/400	25/400	25/200	25/200	25/200	25/200	25/200	25/200
3/8"	25/400	25/400	25/400	25/400	25/400	25/400	25/400	25/400	25/300	25/300	25/300	25/150	25/150	25/100	25/100	25/100	25/100
1/2"	25/400	25/400	25/400	25/300	25/300	25/300	25/200	25/200	25/200	25/200	25/200	25/100	25/100	25/100	25/100	25/100	25/100
3/4"	25/400	25/400	25/300	25/300	25/200	25/200	25/150	25/150	25/100	25/100	25/100	25/75	25/75	25/50	25/50	25/50	25/50
1"	25/200	-	25/200	25/150	25/150	25/100	25/100	25/100	25/75	25/75	25/50	25/50	25/50	25/50	20/40	20/40	20/40
1-1/4"	25/100	-	-	25/100	25/100	25/50	25/50	25/50	25/50	25/50	25/50	15/30	15/30	15/30	15/30	15/30	15/30
1-1/2"	25/100	-	25/100	25/50	25/50	25/50	25/50	25/50	20/40	20/40	20/40	15/30	15/30	25	10/20	10/20	15
2"	25/50	-	-	25/50	25/50	20/40	20/40	20/40	20/40	28	28	18	18	14	14	14	14
2-1/2"	36	-	-	-	36	28	28	24	18	18	18	14	12	12	9	9	8
3"	24	-	-	-	24	18	18	16	12	12	12	9	8	8	6	6	6
3-1/2"	15	-	-	-	-	-	12	10	8	8	8	5	5	5	4	4	4
4"	15	-	-	-	-	-	12	10	8	8	8	5	6	5	4	4	4
5"	4	-	-	-	-	-	4	5	4	5	4	4	2	4	3	3	3
6"	4	-	-	-	-	-	4	2	2	2	2	1	1	1	1	1	1

PRE-CUT PACKING QUANTITIES

Size	14"	16"	18"	24"	30"	36"	42"	48"	60"	72"	120"
1/4"	5	5	5	5	5	5	5	5	5	5	5
3/8"	5	5	5	5	5	5	5	5	5	5	5
1/2"	5	5	5	5	5	5	5	5	5	5	5
3/4"	5	5	5	5	5	5	5	5	5	5	5
1"	3	3	3	3	3	3	3	3	3	3	3
1-1/4"	3	3	3	3	3	3	3	3	3	3	3
1-1/2"	3	3	3	3	3	3	3	3	3	3	3
2"	2	2	2	2	2	2	2	2	2	2	2
2-1/2"	3	3	3	3	3	3	3	3	3	3	3
3"	3	3	3	3	3	3	3	3	3	3	3
4"	1	1	1	1	1	1	1	1	1	1	1

Size	Close Length	Size	Close Length
1/8"	3/4"	2"	2"
1/4"	7/8"	2-1/2"	2-1/2"
3/8"	1"	3"	2-5/8"
1/2"	1-1/8"	3-1/2"	2-3/4"
3/4"	1-3/8"	4"	2-7/8"
1"	1-1/2"	5"	3"
1-1/4"	1-5/8"	6"	3-1/8"
1-1/2"	1-3/4"		



DUCTILE & CAST IRON FITTINGS

SPECIFICATION SHEET

DUCTILE IRON FITTINGS STANDARD SPECIFICATIONS

- **Material:** Conforms to ASTM A536
- **Dimensions:** Conforms to ASME B16.3
- **Bushings and plugs:** Conforms to ASME B16.14
- **Fittings:** Are 100% air tested
- **Threads:** Conforms to ASME B1.20.1
- **Manufacturing Facilities:** ISO 9001:2008 & ISO 14001
- **UL Listed & Approved:** at 500PSI
- Class 150
- Rated to 300 WSP



CAST IRON FITTINGS STANDARD SPECIFICATIONS

- **SPD Cast Iron Threaded Fittings are UL and cUL Listed**
- **Dimensions:** Conforms to ANSI B 16.4
- **Plugs:** Conforms to ASME B 16,14
- **Gray Iron:** ASTM 126 class B
- **Threads:** Conforms to ANSI/ASME B1.20.1
- **Manufacturing Facilities:** ISO 9001:2008 & ISO 14001
- **UL Listed & FM Approved:** at 300PSI
- Class 125



DUCTILE IRON FITTINGS



• ASME B 16.3- Ductile Iron Threaded Fittings Classes 150 • NPT Threaded Standards ANSI/ASME B1.20.1
• Ductile Material Standard ASTM A536 Class 65-45-12 • UL/FM Approved • Pressure Rating 500PSI



90° ELBOWS



SIZE	ITEM	INNER	MASTER
1"	DINL0100	35	70
1-1/4"	DINL0114	21	42
1-1/2"	DINL0112	16	32
2"	DINL0200	17	17



TEE



SIZE	ITEM	INNER	MASTER
1"	DITE0100	28	56
1-1/4"	DITE0114	16	32
1-1/2"	DITE0112	25	25
2"	DITE0200	15	15



90° REDUCING ELBOWS



1" x 1/2"	DIRL1002	55	110
1" x 3/4"	DIRL1003	45	90
1-1/4" x 1/2"	DIRL1140	35	70
1-1/4" x 3/4"	DIRL1141	65	65
1-1/4" x 1"	DIRL1142	25	50
1-1/2" x 1"	DIRL1122	20	40
1-1/2" x 1-1/4"	DIRL1123	19	38
2" x 1/2"	DIRL2000	45	45
2" x 3/4"	DIRL2001	20	40
2" x 1"	DIRL2002	16	32
2" x 1-1/4"	DIRL2003	25	25
2" x 1-1/2"	DIRL2004	10	20



REDUCING TEE



1" x 1/2"	DIRT1002	37	74
1" x 3/4"	DIRT1009	33	66
1-1/4" x 1/2"	DIRT1401	24	48
1-1/4" x 3/4"	DIRT1402	22	44
1-1/4" x 1"	DIRT1403	20	40
1-1/2" x 1/2"	DIRT1201	19	38
1-1/2" x 3/4"	DIRT1202	18	36
1-1/2" x 1"	DIRT1203	16	32
1-1/2" x 1-1/4"	DIRT1204	13	26
2" x 1/2"	DIRT2001	12	24
2" x 3/4"	DIRT2002	12	24
2" x 1"	DIRT2003	23	23
2" x 1-1/4"	DIRT2004	19	19
2" x 1-1/2"	DIRT2005	15	15
1" x 1/2" x 1"	DIRT1005	32	64
1" x 3/4" x 1"	DIRT1008	32	64
1-1/4" x 1" x 1/2"	DIRT1412	55	55
1-1/4" x 1" x 3/4"	DIRT1413	24	48
1-1/4" x 1" x 1"	DIRT1414	45	45
1-1/4" x 1" x 1-1/4"	DIRT1415	20	40
1-1/4" x 1" x 1-1/2"	DIRT1416	16	32
1-1/2" x 1" x 1/2"	DIRT1214	45	45
1-1/2" x 1" x 3/4"	DIRT1215	21	42



45° ELBOWS



1"	DIFF0100	85	85
1-1/4"	DIFF0114	25	50
1-1/2"	DIFF0112	35	35
2"	DIFF0200	11	22



DUCTILE IRON FITTINGS

DUCTIRON 0619
JUNE 2019

- ASME B 16.3- Ductile Iron Threaded Fittings Classes 150 • NPT Threaded Standards ANSI/ASME B1.20.1
- Ductile Material Standard ASTM A536 Class 65-45-12 • UL/FM Approved • Pressure Rating 500PSI



REDUCING TEE - continued



SIZE	ITEM	INNER	MASTER
1-1/2" x 1" x 1"	DIRT1216	19	38
1-1/2" x 1" x 1-1/4"	DIRT1217	33	33
1-1/2" x 1" x 1-1/2"	DIRT1218	15	30
1-1/2" x 1-1/4" x 1/2"	DIRT1219	20	40
1-1/2" x 1-1/4" x 3/4"	DIRT1220	20	40
1-1/2" x 1-1/4" x 1"	DIRT1221	16	32
1-1/2" x 1-1/4" x 2"	DIRT1224	11	22
2" x 1" x 2"	DIRT2011	9	18
2" x 1-1/4" x 2"	DIRT2015	8	16
2" x 1-1/2" x 1/2"	DIRT2021	15	30
2" x 1-1/2" x 3/4"	DIRT2016	14	28
2" x 1-1/2" x 1"	DIRT2017	23	23
2" x 1-1/2" x 1-1/4"	DIRT2018	10	20
2" x 1-1/2" x 1-1/2"	DIRT2019	15	15
2" x 1-1/2" x 2"	DIRT2020	15	15



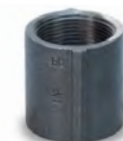
BULL HEAD TEE



1" x 1" x 1-1/4"	DIBT1000	23	46
1" x 1" x 1-1/2"	DIBT1001	17	34
1-1/4" x 1-1/4" x 1-1/2"	DIBT1400	15	30
1-1/4" x 1-1/4" x 2"	DIBT1401	12	24
1-1/2" x 1-1/2" x 2"	DIBT1200	11	22



COUPLING



1"	DICPL100	55	110
1-1/4"	DICPL114	36	72
1-1/2"	DICPL112	57	57
2"	DICPL200	15	30



CROSS



SIZE	ITEM	INNER	MASTER
1"	DICR0100	21	42
1-1/4"	DICR0114	12	24
1-1/2"	DICR0112	19	19
2"	DICR0200	6	12
1-1/4" x 1"	DICR1145	16	32
1-1/2" x 1"	DICR1125	14	28
2" x 1"	DICR2004	8	16



CAP



1"	DICP0100	85	170
1-1/4"	DICP0114	65	130
1-1/2"	DICP0112	40	80
2"	DICP0200	25	50



REDUCING COUPLING



1" x 1/2"	DIRC1002	65	130
1" x 3/4"	DIRC1003	60	120



BUSHING



1" x 1/2"	DIBU1003	125	250
1" x 3/4"	DIBU1004	125	250
1-1/4" x 1"	DIBU1145	65	130
1-1/2" x 1"	DIBU1125	50	100
1-1/2" x 1-1/4"	DIBU1126	50	100
2" x 1"	DIBU2004	35	70
2" x 1-1/4"	DIBU2005	35	70
2" x 1-1/2"	DIBU2006	35	70

CAST IRON FITTINGS

• Conforms to ASTM B16.4 standard • Class 125 • Stocked from 1/2" through 4"



90 ELBOWS



SIZE	ITEM	INNER	MASTER
1/2"	BSE12G	25	100
3/4"	BSE75G	25	100
1"	BSE1G	30	60
1-1/4"	BSE114G	12	24
1-1/2"	BSE112G	10	20
2"	BSE2G	6	12
2-1/2"	BSE242G	1	8
3"	BSE3G	1	4
4"	BSE4G	1	2



45 ELBOWS



SIZE	ITEM	INNER	MASTER
1/2"	BE4512G	25	100
3/4"	BE4575G	25	100
1"	BE451G	30	60
1-1/4"	BE4514G	15	30
1-1/2"	BE4515G	10	20
2"	BE452G	6	12
2-1/2"	BE4522G	1	8
3"	BE453G	1	4
4"	BE454G	1	2



90 REDUCING ELBOWS



3/4" x 1/2"	BSE7512G	45	90
1" x 1/2"	BSE1112G	40	80
1" x 3/4"	BSE175G	35	70
1-1/4" x 1/2"	BSE152G	24	48
1-1/4" x 3/4"	BSE157G	20	40
1-1/4" x 1"	BSE121G	20	40
1-1/2" x 1/2"	BSE122G	18	36
1-1/2" x 3/4"	BSE127G	18	36
1-1/2" x 1"	BSE1121G	16	32
1-1/2" x 1-1/4"	BSE1214G	12	24
2" x 1/2"	BSE22G	10	20
2" x 3/4"	BSE275G	10	20
2" x 1"	BSE21G	7	14
2" x 1-1/4"	BSE215G	7	14
2" x 1-1/2"	BSE212G	7	14
2-1/2" x 1"	BSE221G	4	8
2-1/2" x 1-1/4"	BSE2114G	1	8
2-1/2" x 1-1/2"	BSE2112G	1	8
2-1/2" x 2"	BSE222G	1	8
3" x 2"	BSE32G	1	4



STRAIGHT TEES



1/2"	BT12G	25	100
3/4"	BT75G	30	60
1"	BST1G	16	32
1-1/4"	BT14G	10	20
1-1/2"	BT15G	7	14
2"	BT2G	4	8
2-1/2"	BT22G	1	8
3"	BT3G	1	4
4"	BT4G	1	2



HEX REDUCING COUPLINGS



1" x 1/2"	BSC112G	45	90
1" x 3/4"	BSC17G	40	80
1-1/4" x 1"	BSC141G	20	40
1-1/2" x 3/4"	BSC1501G	20	40
2" x 1"	BSC21G	12	24
2" x 1-1/4"	BSC2001G	12	24

PLUG

1/2"	CIPL0012G	100	400
1"	CIPL1000G	75	150

CAST IRON FITTINGS

• Conforms to ASTM B16.4 standard • Class 125 • Stocked from 1/2" through 4"



REDUCING TEES



CAST IRON FITTINGS

SIZE	ITEM	INNER	MASTER
1/2" x 1/2" x 1"	BST551G	12	48
1" x 1/2" x 1"	BT121G	16	32
1" x 3/4" x 1"	BT171G	16	32
1" x 1" x 1/2"	BT112G	20	40
1" x 1" x 3/4"	BT17G	20	40
1" x 1" x 1-1/4"	BT1114G	14	28
1" x 1" x 1-1/2"	BT1121G	10	20
1-1/4" x 1/2" x 1-1/4"	BT111G	12	24
1-1/4" x 3/4" x 1-1/4"	BT1714G	12	24
1-1/4" x 1/2" x 1/2"	BT1401G	10	30
1-1/4" x 3/4" x 1/2"	BT1402G	10	30
1-1/4" x 1" x 1/2"	BT1112G	15	30
1-1/4" x 1" x 3/4"	BT117G	15	30
1-1/4" x 1" x 1"	BST1411G	10	20
1-1/4" x 1" x 1-1/4"	BT143G	10	20
1-1/4" x 1" x 1-1/2"	BT14112G	10	20
1-1/4" x 1-1/4" x 1/2"	BT142G	14	28
1-1/4" x 1-1/4" x 3/4"	BT147G	10	20
1-1/4" x 1-1/4" x 1"	BT141G	10	20
1-1/4" x 1-1/4" x 1-1/2"	BT1414G	8	16
1-1/4" x 1-1/4" x 2"	BT1422G	7	14
1-1/2" x 1/2" x 1-1/4"	BT144G	8	16
1-1/2" x 1/2" x 1-1/2"	BT1212G	8	16
1-1/2" x 3/4" x 1-1/4"	BT145G	8	16
1-1/2" x 3/4" x 1-1/2"	BT146G	8	16
1-1/2" x 1" x 1/2"	BT148G	14	28
1-1/2" x 1" x 3/4"	BT149G	10	20
1-1/2" x 1" x 1"	BT1241G	8	16
1-1/2" x 1" x 1-1/4"	BT150G	8	16
1-1/2" x 1" x 1-1/2"	BT1122G	8	16
1-1/2" x 1-1/4" x 1/2"	BT1142G	12	24
1-1/2" x 1-1/4" x 3/4"	BT1147G	10	20
1-1/2" x 1-1/4" x 1"	BT1141G	10	20
1-1/2" x 1-1/4" x 1-1/4"	BT1211G	8	16
1-1/2" x 1-1/4" x 1-1/2"	BT1214G	8	16
1-1/2" x 1-1/4" x 2"	BT1231G	5	10

SIZE	ITEM	INNER	MASTER
1-1/2" x 1-1/2" x 1/2"	BT122G	12	24
1-1/2" x 1-1/2" x 3/4"	BT127G	10	20
1-1/2" x 1-1/2" x 1"	BST111G	10	20
1-1/2" x 1-1/2" x 1-1/4"	BST114G	10	20
1-1/2" x 1-1/2" x 2"	BT1423G	6	12
2" x 1/2" x 2"	BT2001G	5	10
2" x 3/4" x 2"	BT2342G	5	10
2" x 1" x 1"	BT155G	5	10
2" x 1" x 1-1/4"	BT151G	5	10
2" x 1" x 1-1/2"	BT152G	5	10
2" x 1" x 2"	BT21112G	5	10
2" x 1-1/4" x 1"	BT2002G	6	12
2" x 1-1/4" x 1-1/4"	BT2003G	4	8
2" x 1-1/4" x 1-1/2"	BT2004G	4	8
2" x 3/4" x 1-1/2"	BT2005G	8	16
2" x 1-1/4" x 2"	BT153G	4	8
2" x 1-1/2" x 1/2"	BT2121G	6	12
2" x 1-1/2" x 3/4"	BT2127G	6	12
2" x 1-1/2" x 1"	BT2128G	6	12
2" x 1-1/2" x 1-1/4"	BT2129G	5	10
2" x 1-1/2" x 1-1/2"	BT2130G	5	10
2" x 1-1/2" x 2"	BT2122G	5	10
2" x 2" x 1/2"	BT212G	6	12
2" x 2" x 3/4"	BT275G	6	12
2" x 2" x 1"	BST21G	6	12
2" x 2" x 1-1/4"	BST214G	5	10
2" x 2" x 1-1/2"	BST212G	5	10
2" x 2" x 2-1/2"	BT154G	4	8
2-1/2" x 3/4" x 2"	BT2501G	4	8
2-1/2" x 1-1/2" x 1-1/2"	BT2502G	1	12
2-1/2" x 2-1/2" x 2"	BT2503G	1	8
3" x 3" x 1-1/4"	BT314G	1	5
3" x 3" x 1-1/2"	BT312G	1	6
3" x 2" x 2"	BT3001G	1	6
3" x 2" x 3"	BT3002G	1	4
3" x 3" x 2"	BT332G	1	4
4" x 2"	BT4020G	1	2