

Job Name: _____

Purchaser: _____

Submitted To: _____

Construction: _____

Reference: _____

Approval: _____

Date: _____

Submitted By: _____

Unit: _____

Drawing #: _____



Outdoor Model:
1Q09RT2BEA



Indoor Model:
QS09WP2BEA



Outdoor Accessories

Front Wind Baffle	UAWB15WA
Side Wind Baffle	UASWB15WA
Back Wind Baffle	UAWB15WA
Top Cover	UATC20WA
Central Controller	UACT32A

Indoor Accessories

Wired Controller	QACT17B
Refrigerant Detection Sensor (RDS)	UALS01A
Remote Controller	WJ26X35394

Specifications

Operating Range	Cooling (Without Wind Baffle or Top Cover)	23~115°F (-5~46°C)
	Heating	-31~75°F (-35~24°C)
Power	Voltage, Cycle, Phase (V/Hz/-)	208-230/60/1
	Operating Voltage Range	187-253 VAC
Cooling	Rated Capacity Btu/hr	9,000
	Capacity Range Btu/hr	3,200~10,000
	SEER2 / EER2	27.0/12.5
	Rated Power Input W	720
Heating	Moisture Removal Pt./hr.	2.3
	Rated Heating Capacity 47°F Btu/hr	10,000
	Heating Capacity Range Btu/hr	3,600~12,000
	COP 5°F	1.8
Outdoor Unit	HSPF2 (IV) / HSPF2 (V)	11/8
	Rated Power Input W	792
	Compressor	DC Inverter Rotary
	Maximum Fuse Size A	20
Indoor Unit	Minimum Circuit Amp A	13
	Outdoor Noise Level dB	54
	Dimension: HxWxD in (mm)	25 1/4 x 35 3/8 x 12 (642 x 898 x 306)
	Carton Dimension: HxWxD in (mm)	27 1/4 x 37 1/4 x 15 3/8 (691 x 945 x 392)
Indoor Unit	Weight (Net/Ship) - lbs (kg)	83.41/96.87 (37.8/43.9)
	Basepan Heater	Yes
	Fan Speed Stages	5 + Auto
	Airflow CFM: Cooling (Turbo/High/Med/Low/Quiet)	395/355/310/260/170
	Indoor Motor Speed RPM: Cooling (Turbo/High/Med/Low/Quiet)	1200/1100/875/650/610
	Indoor Sound Level dB: Cooling (Turbo/High/Med/Low/Quiet)	44/42/36/32/27
	Airflow CFM: Heating (Turbo/High/Med/Low/Quiet)	395/355/290/220/170
	Indoor Motor Speed RPM: Heating (Turbo/High/Med/Low/Quiet)	1200/1100/900/700/610
	Indoor Sound Level dB: Heating (Turbo/High/Med/Low/Quiet)	43/41/37/32/29
	Dimension: H x W x D in (mm)	12 1/4 x 36 x 8 3/8 (312 x 914 x 213)
	Carton Dimension: H x W x D in (mm)	11 7/8 x 38 5/8 x 15 5/8 (302 x 982 x 396)
	Weight (Net/Ship) - lbs (kg)	24.49/30.56 (11.1/13.85)
	Drain Pipe Size O.D in	5/8
	WiFi*	Built-in
Refrigerant Line	Factory-Installed Refrigerant Detection Sensor (RDS)	No
	Refrigerant Detection Sensor (RDS) Compatible	Yes
	Refrigerant	R454B
	Connections	Flare
	Liquid O.D. in	1/4
	Suction O.D. in	3/8
Refrigerant Line	Factory Charge Oz	46.6
	Maximum Line Length Ft / m	66/20
	Maximum Height Ft / m	33/10

*WiFi includes SmartHQ™ Home and SmartHQ™ Service compatibility.

1Q09RT2BEA / QS09WP2BEA

Heating Capacity Data

TC: Total Capacity PI: Power Input

Outdoor Air Temp DB	Indoor Temperature (°F, DB)																				
	60			64			68			70			72			75			79		
	TC (Btu/h)	PI (W)	COP	TC (Btu/h)	PI (W)	COP	TC (Btu/h)	PI (W)	COP	TC (Btu/h)	PI (W)	COP	TC (Btu/h)	PI (W)	COP	TC (Btu/h)	PI (W)	COP	TC (Btu/h)	PI (W)	COP
-31°F (-35°C)	4,523	889	1.49	4,252	907	1.37	4,124	926	1.31	4,000	945	1.24	3,880	964	1.18	3,763	984	1.12	3,537	1,004	1.03
-22°F (-30°C)	5,654	1,046	1.58	5,315	1,068	1.46	5,155	1,089	1.39	5,000	1,112	1.32	4,850	1,134	1.25	4,704	1,157	1.19	4,422	1,181	1.10
-15°F (-26°C)	8,248	1,395	1.73	7,754	1,423	1.60	7,520	1,453	1.52	7,294	1,482	1.44	7,075	1,512	1.37	6,862	1,543	1.30	6,451	1,575	1.20
-5°F (-21°C)	9,345	1,438	1.90	8,785	1,468	1.75	8,521	1,497	1.67	8,265	1,528	1.59	8,016	1,559	1.51	7,775	1,591	1.43	7,309	1,623	1.32
0°F (-18°C)	10,280	1,483	2.03	9,663	1,513	1.87	9,373	1,544	1.78	9,091	1,575	1.69	8,818	1,607	1.61	8,553	1,640	1.53	8,040	1,674	1.41
5°F (-15°C)	11,308	1,528	2.17	10,630	1,560	2.00	10,310	1,592	1.90	10,000	1,624	1.80	9,699	1,657	1.72	9,408	1,691	1.63	8,843	1,725	1.50
14°F (-10°C)	11,421	1,345	2.49	10,736	1,372	2.29	10,413	1,400	2.18	10,100	1,429	2.07	9,796	1,458	1.97	9,502	1,488	1.87	8,932	1,518	1.72
23°F (-5°C)	11,535	1,183	2.86	10,843	1,208	2.63	10,517	1,232	2.50	10,201	1,257	2.38	9,894	1,283	2.26	9,597	1,309	2.15	9,021	1,336	1.98
32°F (0°C)	11,650	1,041	3.28	10,952	1,063	3.02	10,622	1,084	2.87	10,303	1,106	2.73	9,993	1,129	2.59	9,693	1,152	2.47	9,111	1,175	2.27
41°F (5°C)	11,767	1,052	3.28	11,061	1,074	3.02	10,729	1,096	2.87	10,406	1,118	2.73	10,093	1,141	2.59	9,790	1,164	2.46	9,203	1,188	2.27
47°F (8°C)	11,308	745	4.45	10,630	761	4.10	10,310	776	3.89	10,000	792	3.70	9,699	808	3.52	9,408	825	3.34	8,843	841	3.08
55°F (13°C)	11,534	749	4.51	10,842	764	4.16	10,516	780	3.95	10,200	796	3.76	9,893	812	3.57	9,596	829	3.39	9,020	846	3.13
65°F (18°C)	11,764	753	4.58	11,059	768	4.22	10,726	784	4.01	10,404	800	3.81	10,091	816	3.62	9,788	833	3.44	9,201	850	3.17
75°F (24°C)	12,000	757	4.65	11,280	772	4.28	10,941	788	4.07	10,612	804	3.87	10,293	820	3.68	9,983	837	3.50	9,385	854	3.22

Cooling Capacity Data

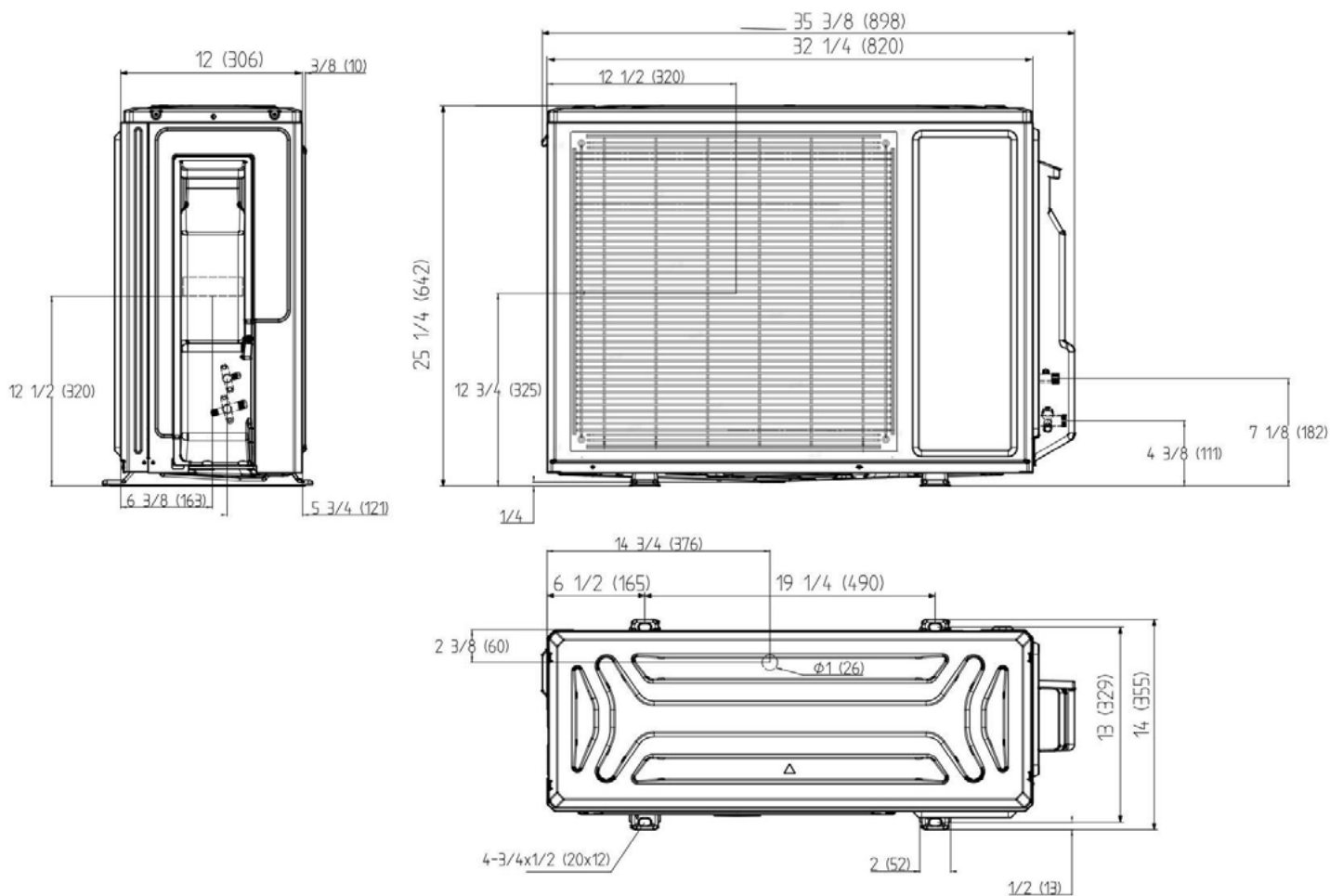
TC: Total Capacity PI: Power Input

Outdoor Air Temp DB	Indoor Temperature (°F, DB)																				
	64 / 53			68 / 57			72 / 61			77 / 64			80 / 67			82 / 70			86 / 72		
	TC (Btu/h)	PI (W)	EER2	TC (Btu/h)	PI (W)	EER2	TC (Btu/h)	PI (W)	EER2	TC (Btu/h)	PI (W)	EER2	TC (Btu/h)	PI (W)	EER2	TC (Btu/h)	PI (W)	EER2	TC (Btu/h)	PI (W)	EER2
23°F (-5°C)	3,207	580	5.53	3,346	559	5.99	3,491	538	6.49	3,642	519	7.02	3,800	500	7.61	3,965	481	8.24	4,136	464	8.92
32°F (0°C)	4,170	638	6.54	4,350	615	7.08	4,539	592	7.66	4,735	571	8.30	4,940	550	8.99	5,154	530	9.73	5,377	510	10.54
50°F (10°C)	5,421	695	7.79	5,655	670	8.44	5,900	645	9.14	6,156	622	9.90	6,422	599	10.72	6,700	577	11.61	6,990	556	12.57
68°F (20°C)	7,047	751	9.38	7,352	724	10.16	7,670	697	11.00	8,002	672	11.92	8,349	647	12.90	8,710	623	13.97	9,087	601	15.13
86°F (30°C)	7,751	804	9.64	8,087	774	10.44	8,437	746	11.31	8,803	719	12.25	9,184	692	13.27	9,581	667	14.37	9,996	643	15.56
95°F (35°C)	7,596	836	9.09	7,925	805	9.84	8,269	776	10.66	8,627	747	11.54	9,000	720	12.50	9,390	694	13.54	9,796	668	14.66
104°F (40°C)	7,445	869	8.56	7,767	837	9.27	8,103	807	10.04	8,454	777	10.88	8,820	749	11.78	9,202	721	12.76	9,600	695	13.81

Heating and cooling capacities and power usage are measured under the assumption of indoor humidity of 46%.

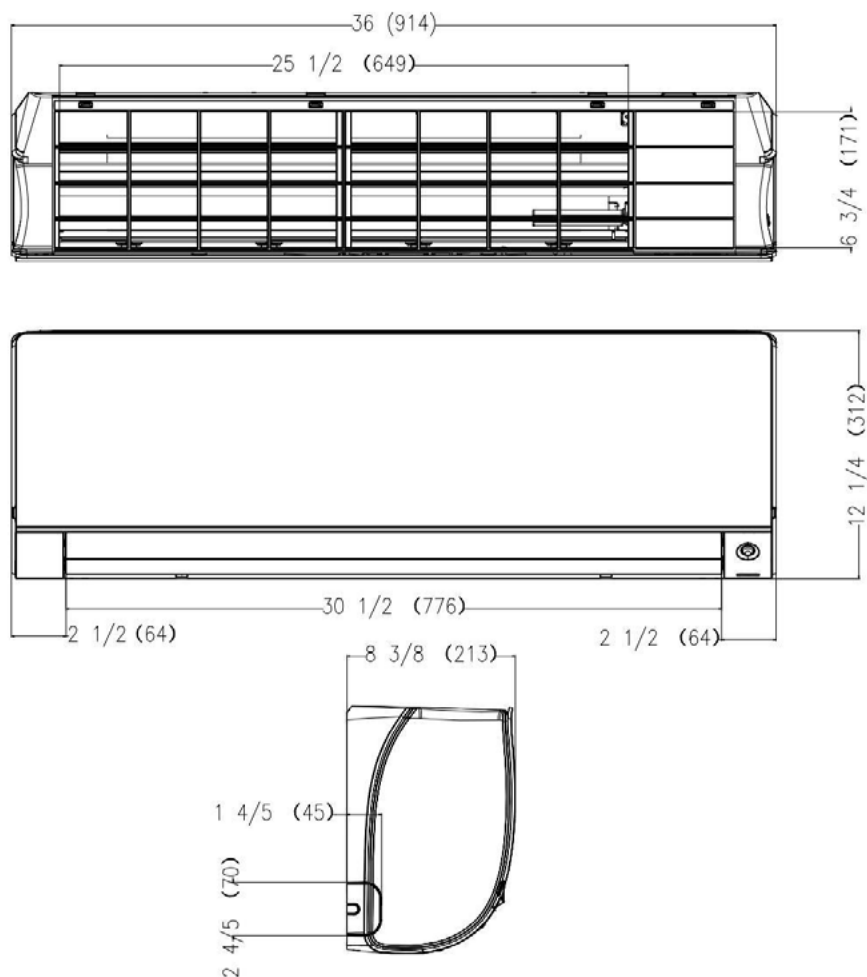
*Cooling capacities under low ambient temperatures below 23°F (-5°C) are tested when using wind baffle on outdoor unit.

1Q09RT2BEA



Note: Dimensions are shown in inches (millimeters)

QS09WP2BEA



Note: Dimensions are shown in inches (millimeters)

Job Name: _____

Purchaser: _____

Submitted To: _____

Construction: _____

Reference: _____

Approval: _____

Date: _____

Submitted By: _____

Unit: _____

Drawing #: _____



Outdoor Model:
1Q09RT2BEA



Indoor Model:
US09CB2BEA



Outdoor Accessories

Front Wind Baffle	UAWB15WA
Side Wind Baffle	UASWB15WA
Back Wind Baffle	UAWB15WA
Top Cover	UATC20WA
Central Controller	UACT32A

Indoor Accessories

Cassette Panel (Required)	QACCP01WA
Wired Controller	QACT17B
Refrigerant Detection Sensor (RDS)	UALS01A
Remote Controller	WJ26X35394

For more information visit us:

GEAppliancesAirAndWater.com

©Copyright 2025 GE Appliances, a Haier Company.
Our continued commitment to quality products may mean a change in specifications without notice.



Specifications

Operating Range	Cooling (Without Wind Baffle or Top Cover)	23~115°F (-5~46°C)
	Heating	-31~75°F (-35~24°C)
Power	Voltage, Cycle, Phase (V/Hz/-)	208-230/60/1
	Operating Voltage Range	187-253 VAC
Cooling	Rated Capacity Btu/hr	9,000
	Capacity Range Btu/hr	3,000-10,000
	SEER2 / EER2	20/12
	Rated Power Input W	750
Heating	Moisture Removal Pt./hr.	2.4
	Rated Heating Capacity 47°F Btu/hr	10,000
	Heating Capacity Range Btu/hr	3,000-11,000
	COP 5°F	1.8
Outdoor Unit	HSPF2 (IV) / HSPF2 (V)	10.0/8.0
	Rated Power Input W	793
	Compressor	DC Inverter Rotary
	Maximum Fuse Size A	20
Indoor Unit	Minimum Circuit Amp A	13
	Outdoor Noise Level dB	54
	Dimension: HxWxD in (mm)	25 1/4 x 35 3/8 x 12 (642 x 898 x 306)
	Carton Dimension: HxWxD in (mm)	27 1/4 x 37 1/4 x 15 3/8 (691 x 945 x 392)
Indoor Unit	Weight (Net/Ship) - lbs (kg)	83.41/96.87 (37.8/43.9)
	Basepan Heater	Yes
	Fan Speed Stages	5 + Auto
	Airflow CFM: Cooling (Turbo/High/Med/Low/Quiet)	440/387/351/320/290
Indoor Unit	Indoor Motor Speed RPM: Cooling (Turbo/High/Med/Low/Quiet)	830/760/690/620/560
	Indoor Sound Level dB: Cooling (Turbo/High/Med/Low/Quiet)	42/40/36/32/25
	Airflow CFM: Heating (Turbo/High/Med/Low/Quiet)	440/387/351/320/290
	Indoor Motor Speed RPM: Heating (Turbo/High/Med/Low/Quiet)	830/760/690/620/560
Indoor Unit	Indoor Sound Level dB: Heating (Turbo/High/Med/Low/Quiet)	42/40/36/32/25
	Dimension: H x W x D in (mm)	10 1/4 x 22 3/4 x 22 3/4 (260 x 575 x 575)
	Carton Dimension: H x W x D in (mm)	27 7/8 x 25 3/4 x 14 1/4 (708 x 652 x 360)
	Weight (Net/Ship) - lbs (kg)	32.41/47.4 (14.7/21.5)
Indoor Unit	Drain Pipe Size O.D in	1
	WiFi*	Built-in
	Factory-Installed Refrigerant Detection Sensor (RDS)	No
	Refrigerant Detection Sensor (RDS) Compatible	Yes
Refrigerant Line	Refrigerant	R454B
	Connections	Flare
	Liquid O.D. in	1/4
	Suction O.D. in	3/8
	Factory Charge Oz	46.6
	Maximum Line Length Ft / m	66/20
Refrigerant Line	Maximum Height Ft / m	33/10

Condensate drain adapter shipped with indoor unit is designed to accept a 3/4" PVC pipe.
*WiFi includes SmartHQ™ Home and SmartHQ™ Service compatibility.

1Q09RT2BEA / US09CB2BEA

Heating Capacity Data

TC: Total Capacity PI: Power Input

Outdoor Air Temp DB	Indoor Temperature (°F, DB)																	
	60			65			70			75			80			86		
	TC (Btu/h)	PI (W)	COP	TC (Btu/h)	PI (W)	COP	TC (Btu/h)	PI (W)	COP	TC (Btu/h)	PI (W)	COP	TC (Btu/h)	PI (W)	COP	TC (Btu/h)	PI (W)	COP
-31°F (-35°C)	3,533	747	1.39	3,482	779	1.31	3,430	821	1.22	3,361	853	1.15	3,293	887	1.09	3,224	936	1.01
-22°F (-30°C)	4,290	789	1.59	4,228	823	1.51	4,165	866	1.41	4,082	901	1.33	3,998	936	1.25	3,915	988	1.16
-15°F (-26°C)	5,047	830	1.78	4,974	866	1.68	4,900	912	1.57	4,802	948	1.48	4,704	985	1.40	4,606	1,040	1.30
-5°F (-21°C)	6,077	909	1.96	5,989	949	1.85	5,900	999	1.73	5,782	1,039	1.63	5,664	1,079	1.54	5,546	1,139	1.43
0°F (-18°C)	7,107	981	2.12	7,004	1,025	2.00	6,900	1,078	1.88	6,762	1,122	1.77	6,624	1,165	1.67	6,486	1,229	1.55
5°F (-15°C)	9,270	1,335	2.04	9,135	1,394	1.92	9,000	1,467	1.80	8,820	1,526	1.69	8,640	1,584	1.60	8,460	1,672	1.48
14°F (-10°C)	8,446	974	2.54	8,323	1,017	2.40	8,200	1,071	2.24	8,036	1,113	2.12	7,872	1,156	2.00	7,708	1,220	1.85
23°F (-5°C)	9,373	823	3.34	9,237	859	3.15	9,100	904	2.95	8,918	940	2.78	8,736	976	2.62	8,554	1,031	2.43
32°F (0°C)	9,682	794	3.57	9,541	829	3.37	9,400	872	3.16	9,212	907	2.98	9,024	942	2.81	8,836	994	2.60
41°F (5°C)	10,609	787	3.95	10,455	821	3.73	10,300	864	3.49	10,094	899	3.29	9,888	934	3.10	9,682	985	2.88
47°F (8°C)	10,300	722	4.18	10,150	753	3.95	10,000	793	3.70	9,800	825	3.48	9,600	856	3.29	9,400	904	3.05
55°F (13°C)	10,043	613	4.80	9,896	640	4.53	9,750	674	4.24	9,555	701	3.99	9,360	728	3.77	9,165	768	3.50
65°F (18°C)	10,506	520	5.93	10,353	542	5.59	10,200	571	5.24	9,996	594	4.93	9,792	617	4.65	9,588	651	4.32
75°F (24°C)	11,021	563	5.74	10,861	588	5.42	10,700	619	5.07	10,486	643	4.78	10,272	668	4.51	10,058	705	4.18
86°F (30°C)	12,154	592	6.02	11,977	618	5.68	11,800	650	5.32	11,564	676	5.01	11,328	702	4.73	11,092	741	4.39

Cooling Capacity Data

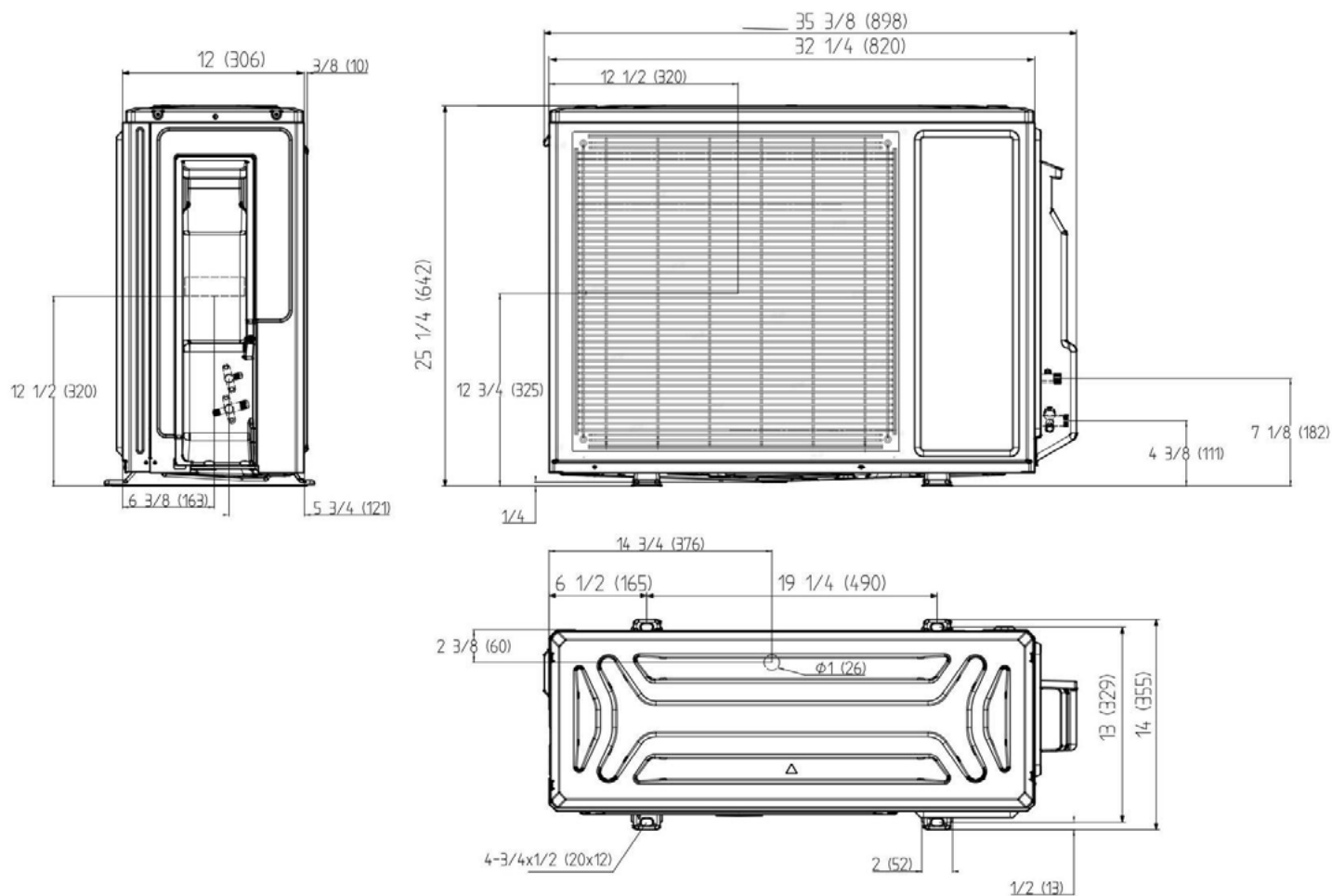
TC: Total Capacity PI: Power Input

Outdoor Air Temp DB	Indoor Temperature (°F, DB)																				
	60 / 50			64 / 53			70 / 57			75 / 62			80 / 67			86 / 72			90 / 75		
	TC (Btu/h)	PI (W)	EER2	TC (Btu/h)	PI (W)	EER2	TC (Btu/h)	PI (W)	EER2	TC (Btu/h)	PI (W)	EER2	TC (Btu/h)	PI (W)	EER2	TC (Btu/h)	PI (W)	EER2	TC (Btu/h)	PI (W)	EER2
23°F (-5°C)	5,540	240	6.77	5,832	250	6.84	6,269	260	7.07	6,707	270	7.28	7,290	280	7.63	7,727	290	7.81	8,092	300	7.91
32°F (0°C)	6,088	290	6.15	6,408	300	6.26	6,889	310	6.51	7,369	320	6.75	8,010	330	7.11	8,491	340	7.32	8,891	350	7.45
50°F (10°C)	7,114	330	6.32	7,488	340	6.45	8,050	350	6.74	8,611	360	7.01	9,360	370	7.41	9,922	380	7.65	10,390	390	7.81
68°F (20°C)	7,592	480	4.64	7,992	490	4.78	8,591	500	5.04	9,191	510	5.28	9,990	520	5.63	10,589	530	5.86	11,089	540	6.02
86°F (30°C)	7,079	630	3.29	7,452	640	3.41	8,011	650	3.61	8,570	660	3.81	9,315	670	4.07	9,874	680	4.26	10,340	690	4.39
95°F (35°C)	6,840	710	2.82	7,200	720	2.93	7,740	730	3.11	8,280	740	3.28	9,000	750	3.52	9,540	760	3.68	9,990	770	3.80
104°F (40°C)	5,882	680	2.54	6,192	690	2.63	6,656	700	2.79	7,121	710	2.94	7,740	720	3.15	8,204	730	3.29	8,591	740	3.40
110°F (43°C)	5,746	740	2.28	6,048	750	2.36	6,502	760	2.51	6,955	770	2.65	7,560	780	2.84	8,014	790	2.97	8,392	800	3.07
115°F (46°C)	5,540	770	2.11	5,832	780	2.19	6,269	790	2.33	6,707	800	2.46	7,290	810	2.64	7,727	820	2.76	8,092	830	2.86

Heating and cooling capacities and power usage are measured under the assumption of indoor humidity of 46%.

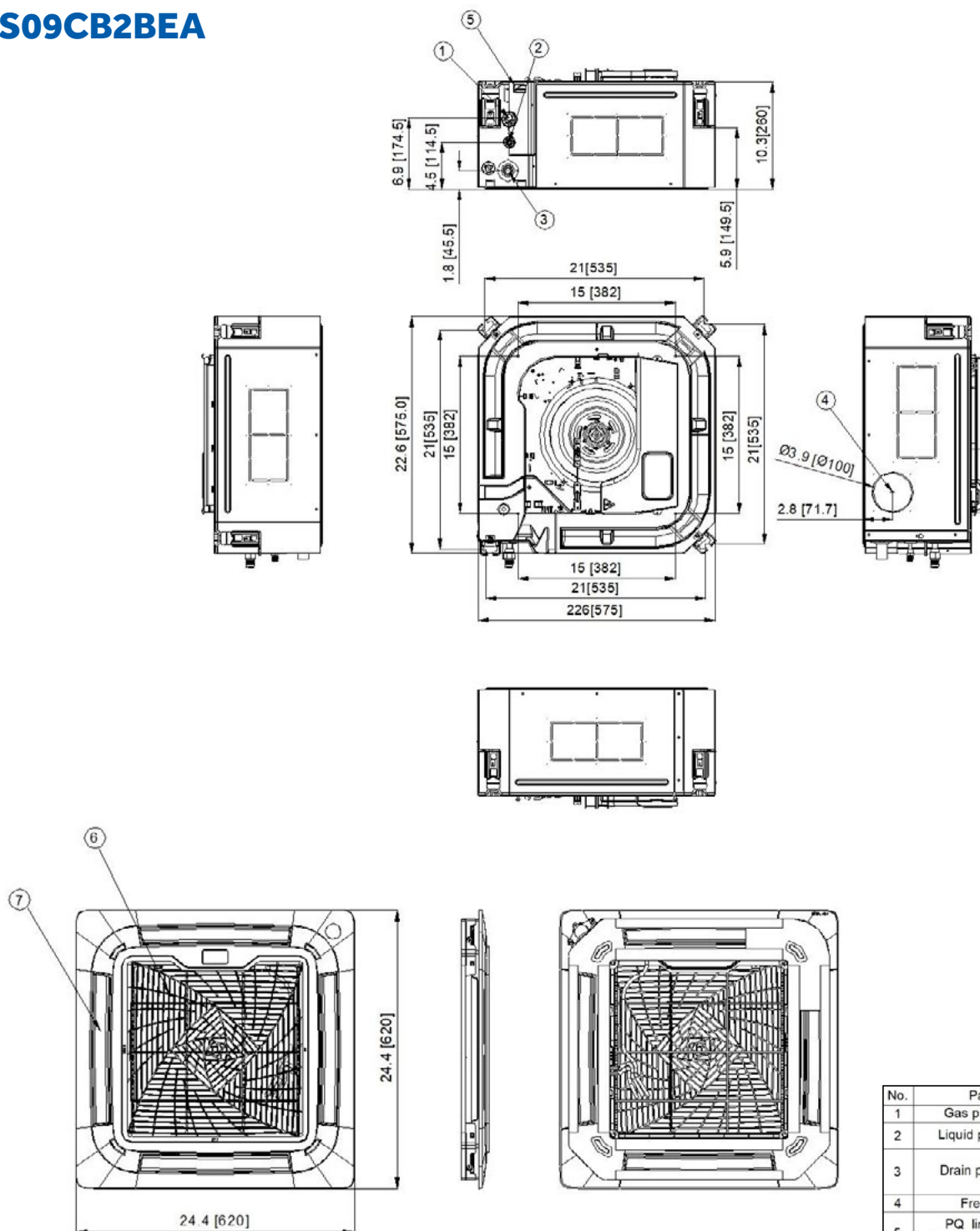
*Cooling capacities under low ambient temperatures below 23°F (-5°C) are tested when using wind baffle on outdoor unit.

1Q09RT2BEA



Note: Dimensions are shown in inches (millimeters)

US09CB2BEA



Note: Dimensions are shown in inches (millimeters)

No.	Parts Name	Notes
1	Gas pipe connection	
2	Liquid pipe connection	
3	Drain pipe connection	OD. Diameter: Ø0.984(25), ID. Diameter: $\phi 0.827(21)$
4	Fresh air inlet	
5	PQ line connection Power supply connection	
6	Air inlet grille	
7	Air outlet	

For more information visit us:

GEAppliancesAirAndWater.com

©Copyright 2025 GE Appliances, a Haier Company.
Our continued commitment to quality products may mean a change in specifications without notice.



Job Name: _____

Purchaser: _____

Submitted To: _____

Construction: _____

Reference: _____

Approval: _____

Date: _____

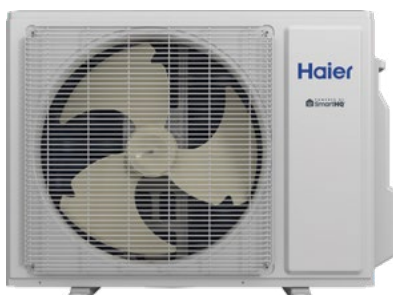
Submitted By: _____

Unit: _____

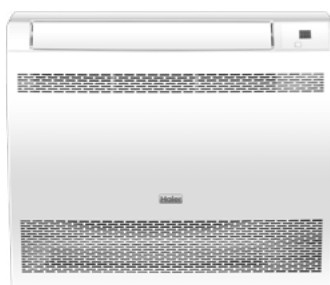
Drawing #: _____



Outdoor Model:
1Q09RT2BEA



Indoor Model:
US09FB2BEA



Outdoor Accessories

Front Wind Baffle	UAWB15WA
Side Wind Baffle	UASWB15WA
Back Wind Baffle	UAWB15WA
Top Cover	UATC20WA
Central Controller	UACT32A

Indoor Accessories

Wired Controller	QACT17B
Remote Controller	WJ26X35813

Specifications

Operating Range	Cooling (Without Wind Baffle or Top Cover)	23~115°F (-5~46°C)
	Heating	-31~75°F (-35~24°C)
Power	Voltage, Cycle, Phase (V/Hz/-)	208-230/60/1
	Operating Voltage Range	187-253 VAC
Cooling	Rated Capacity Btu/hr	9,000
	Capacity Range Btu/hr	3,000-10,000
	SEER2 / EER2	20/12
	Rated Power Input W	750
Heating	Moisture Removal Pt./hr.	2.16
	Rated Heating Capacity 47°F Btu/hr	10,000
	Heating Capacity Range Btu/hr	2,500-10,000
	COP 5°F	1.8
Outdoor Unit	HSPF2 (IV) / HSPF2 (V)	10.5/7.8
	Rated Power Input W	916
	Compressor	DC Inverter Rotary
	Maximum Fuse Size A	20
Indoor Unit	Minimum Circuit Amp A	13
	Outdoor Noise Level dB	54
	Dimension: HxWxD in (mm)	25 1/4 x 35 3/8 x 12 (642 x 898 x 306)
	Carton Dimension: HxWxD in (mm)	27 1/4 x 37 1/4 x 15 3/8 (691 x 945 x 392)
Indoor Unit	Weight (Net/Ship) - lbs (kg)	83.41/96.87 (37.8/43.9)
	Basepan Heater	Yes
	Fan Speed Stages	5 + Auto
	Airflow CFM: Cooling (Turbo/High/Med/Low/Quiet)	290/218/205/176/147
Indoor Unit	Indoor Motor Speed RPM: Cooling (Turbo/High/Med/Low/Quiet)	700/560/480/410/360
	Indoor Sound Level dB: Cooling (Turbo/High/Med/Low/Quiet)	44/40/37/32/24
	Airflow CFM: Heating (Turbo/High/Med/Low/Quiet)	312/206/205/176/147
	Indoor Motor Speed RPM: Heating (Turbo/High/Med/Low/Quiet)	700/560/480/410/360
Indoor Unit	Indoor Sound Level dB: Heating (Turbo/High/Med/Low/Quiet)	43/37/32/27/20
	Dimension: H x W x D in (mm)	23 5/8 x 27 1/2 x 8 3/4 (600 x 700 x 220)
	Carton Dimension: H x W x D in (mm)	27 1/2 x 30 3/4 x 12 (700 x 780 x 300)
	Weight (Net/Ship) - lbs (kg)	32.41/43.43 (14.7/19.7)
Refrigerant Line	Drain Pipe Size O.D in	5/8
	WiFi*	Built-in
	Factory-Installed Refrigerant Detection Sensor (RDS)	Yes
	Refrigerant	R454B
Refrigerant Line	Connections	Flare
	Liquid O.D. in	1/4
	Suction O.D. in	3/8
	Factory Charge Oz	46.6
Refrigerant Line	Maximum Line Length Ft / m	66/20
	Maximum Height Ft / m	33/10

*WiFi includes SmartHQ™ Home and SmartHQ™ Service compatibility.

1Q09RT2BEA / US09FB2BEA

Heating Capacity Data

TC: Total Capacity PI: Power Input

Outdoor Air Temp DB	Indoor Temperature (°F, DB)																	
	60			65			70			75			80			86		
	TC (Btu/h)	PI (W)	COP	TC (Btu/h)	PI (W)	COP	TC (Btu/h)	PI (W)	COP	TC (Btu/h)	PI (W)	COP	TC (Btu/h)	PI (W)	COP	TC (Btu/h)	PI (W)	COP
-31°F (-35°C)	3,389	735	1.35	3,340	768	1.27	3,290	808	1.19	3,224	841	1.12	3,158	872	1.06	3,093	921	0.98
-22°F (-30°C)	4,115	776	1.55	4,055	810	1.47	3,995	853	1.37	3,915	887	1.29	3,835	921	1.22	3,755	972	1.13
-15°F (-26°C)	4,841	817	1.74	4,771	853	1.64	4,700	898	1.53	4,606	934	1.45	4,512	969	1.36	4,418	1,023	1.27
-5°F (-21°C)	6,386	1,034	1.81	6,293	1,079	1.71	6,200	1,136	1.60	6,076	1,181	1.51	5,952	1,227	1.42	5,828	1,295	1.32
0°F (-18°C)	7,519	1,150	1.92	7,410	1,201	1.81	7,300	1,264	1.69	7,154	1,315	1.59	7,008	1,365	1.50	6,862	1,441	1.40
5°F (-15°C)	9,270	1,334	2.04	9,135	1,392	1.92	9,000	1,466	1.80	8,820	1,524	1.70	8,640	1,583	1.60	8,460	1,671	1.48
14°F (-10°C)	8,446	984	2.52	8,323	1,027	2.38	8,200	1,081	2.22	8,036	1,124	2.10	7,872	1,167	1.98	7,708	1,232	1.83
23°F (-5°C)	9,373	950	2.89	9,237	992	2.73	9,100	1,044	2.55	8,918	1,086	2.41	8,736	1,128	2.27	8,554	1,190	2.11
32°F (0°C)	9,682	917	3.09	9,541	957	2.92	9,400	1,008	2.73	9,212	1,048	2.58	9,024	1,088	2.43	8,836	1,149	2.25
41°F (5°C)	10,609	909	3.42	10,455	949	3.23	10,300	998	3.02	10,094	1,038	2.85	9,888	1,078	2.69	9,682	1,138	2.49
47°F (8°C)	10,300	834	3.62	10,150	870	3.42	10,000	916	3.20	9,800	953	3.02	9,600	989	2.84	9,400	1,044	2.64
55°F (13°C)	9,888	709	4.09	9,744	740	3.86	9,600	779	3.61	9,408	810	3.41	9,216	841	3.21	9,024	888	2.98
65°F (18°C)	10,197	600	4.98	10,049	627	4.70	9,900	660	4.40	9,702	686	4.15	9,504	712	3.91	9,306	752	3.63
75°F (24°C)	10,609	650	4.78	10,455	679	4.51	10,300	714	4.23	10,094	743	3.98	9,888	772	3.76	9,682	815	3.48
86°F (30°C)	11,021	684	4.73	10,861	714	4.46	10,700	751	4.18	10,486	781	3.93	10,272	811	3.71	10,058	856	3.44

Cooling Capacity Data

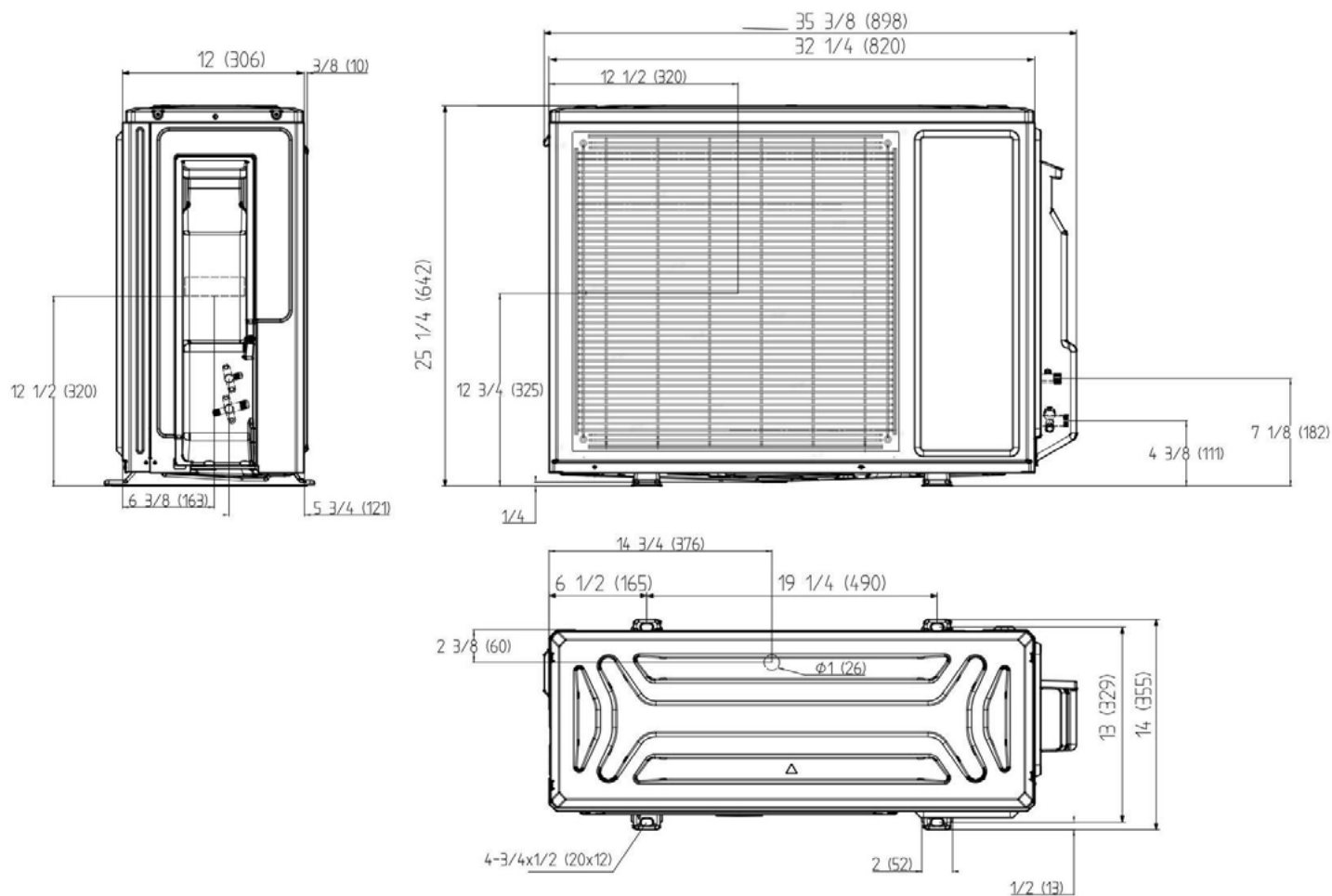
TC: Total Capacity PI: Power Input

Outdoor Air Temp DB	Indoor Temperature (°F, DB)																				
	60 / 50			64 / 53			70 / 57			75 / 62			80 / 67			86 / 72			90 / 75		
	TC (Btu/h)	PI (W)	EER2	TC (Btu/h)	PI (W)	EER2	TC (Btu/h)	PI (W)	EER2	TC (Btu/h)	PI (W)	EER2	TC (Btu/h)	PI (W)	EER2	TC (Btu/h)	PI (W)	EER2	TC (Btu/h)	PI (W)	EER2
23°F (-5°C)	4,925	170	8.49	5,184	180	8.44	5,573	190	8.60	5,962	200	8.74	6,480	210	9.04	6,869	220	9.15	7,193	230	9.17
32°F (0°C)	5,404	210	7.54	5,688	220	7.58	6,115	230	7.79	6,541	240	7.99	7,110	250	8.34	7,537	260	8.50	7,892	270	8.57
50°F (10°C)	6,224	240	7.60	6,552	250	7.68	7,043	260	7.94	7,535	270	8.18	8,190	280	8.57	8,681	290	8.77	9,091	300	8.88
68°F (20°C)	6,908	390	5.19	7,272	400	5.33	7,817	410	5.59	8,363	420	5.84	9,090	430	6.20	9,635	440	6.42	10,090	450	6.57
86°F (30°C)	6,566	530	3.63	6,912	540	3.75	7,430	550	3.96	7,949	560	4.16	8,640	570	4.44	9,158	580	4.63	9,590	590	4.76
95°F (35°C)	6,750	710	2.79	7,200	720	2.93	7,650	730	3.07	8,190	740	3.24	9,000	750	3.52	9,450	760	3.64	9,900	770	3.77
104°F (40°C)	5,814	660	2.58	6,120	670	2.68	6,579	680	2.84	7,038	690	2.99	7,650	700	3.20	8,109	710	3.35	8,492	720	3.46
110°F (43°C)	5,540	710	2.29	5,832	720	2.37	6,269	730	2.52	6,707	740	2.66	7,290	750	2.85	7,727	760	2.98	8,092	770	3.08
115°F (46°C)	5,335	760	2.06	5,616	770	2.14	6,037	780	2.27	6,458	790	2.40	7,020	800	2.57	7,441	810	2.69	7,792	820	2.79

Heating and cooling capacities and power usage are measured under the assumption of indoor humidity of 46%.

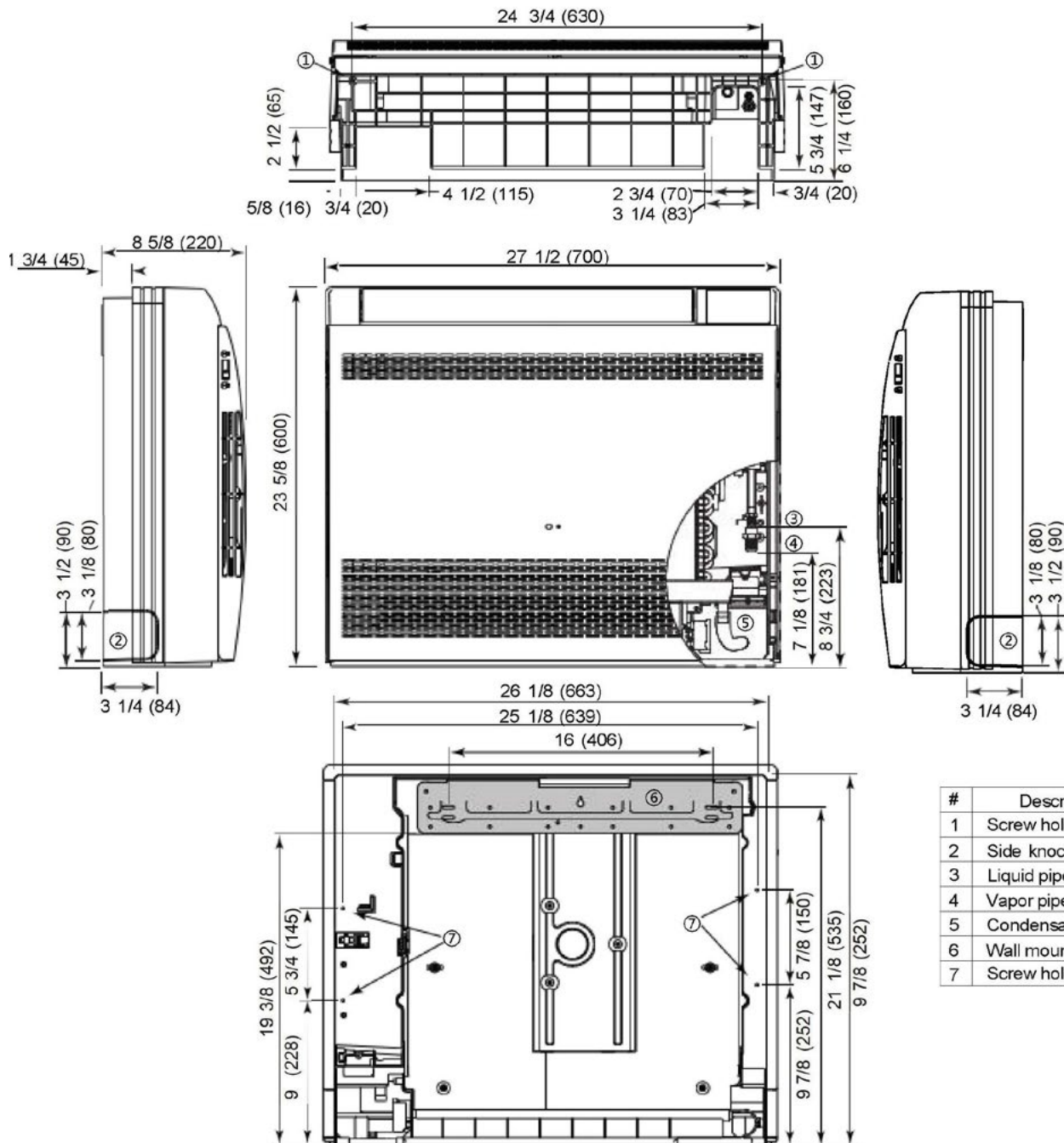
*Cooling capacities under low ambient temperatures below 23°F (-5°C) are tested when using wind baffle on outdoor unit.

1Q09RT2BEA



Note: Dimensions are shown in inches (millimeters)

US09FB2BEA



Note: Dimensions are shown in inches (millimeters)

Job Name: _____

Purchaser: _____

Submitted To: _____

Construction: _____

Reference: _____

Approval: _____

Date: _____

Submitted By: _____

Unit: _____

Drawing #: _____



Outdoor Model:
1Q09RT2BEA



Indoor Model:
US09MB2BEA



Outdoor Accessories

Front Wind Baffle	UAWB15WA
Side Wind Baffle	UASWB15WA
Back Wind Baffle	UAWB15WA
Top Cover	UATC20WA
Central Controller	UACT32A

Indoor Accessories

Wired Controller	QACT17B
Supply Plenum	UAPT0912A
MERV Return Air Filter Box	UAMFB0912A

Specifications

Operating Range	Cooling (Without Wind Baffle or Top Cover)	23~115°F (-5~46°C)
	Heating	-31~75°F (-35~24°C)
Power	Voltage, Cycle, Phase (V/Hz/-)	208-230/60/1
	Operating Voltage Range	187-253 VAC
Cooling	Rated Capacity Btu/hr	9,000
	Capacity Range Btu/hr	3,000-10,000
	SEER2 / EER2	19.6/12
	Rated Power Input W	750
Heating	Moisture Removal Pt./hr.	1.1
	Rated Heating Capacity 47°F Btu/hr	10,000
	Heating Capacity Range Btu/hr	3,000-12,500
	COP 5°F	1.8
Outdoor Unit	HSPF2 (IV) / HSPF2 (V)	10.5/8.5
	Rated Power Input W	838
	Compressor	DC Inverter Rotary
	Maximum Fuse Size A	20
Indoor Unit	Minimum Circuit Amp A	13
	Outdoor Noise Level dB	54
	Dimension: HxWxD in (mm)	25 1/4 x 35 3/8 x 12 (642 x 898 x 306)
	Carton Dimension: HxWxD in (mm)	27 1/4 x 37 1/4 x 15 3/8 (691 x 945 x 392)
Indoor Unit	Weight (Net/Ship) - lbs (kg)	83.41/96.87 (37.8/43.9)
	Basepan Heater	Yes
	Fan Speed Stages	5 + Auto
	Airflow CFM: Cooling (Turbo/High/Med/Low/Quiet)	353/286/200/150/141
Indoor Unit	Indoor Motor Speed RPM: Cooling (Turbo/High/Med/Low/Quiet)	880/800/720/640/560
	Indoor Sound Level dB: Cooling (Turbo/High/Med/Low/Quiet)	44/41/38/35/32
	Airflow CFM: Heating (Turbo/High/Med/Low/Quiet)	358/292/208/155/145
	Indoor Motor Speed RPM: Heating (Turbo/High/Med/Low/Quiet)	880/800/720/640/560
Indoor Unit	Indoor Sound Level dB: Heating (Turbo/High/Med/Low/Quiet)	44/41/38/35/32
	Dimension: H x W x D in (mm)	9 3/4 x 31 3/4 x 27 1/2 (248 x 805 x 700)
	Carton Dimension: H x W x D in (mm)	12 5/8 x 37 1/2 x 33 1/2 (320 x 950 x 850)
	Weight (Net/Ship) - lbs (kg)	62.17/86.86 (28.2/39.4)
Refrigerant Line	Drain Pipe Size O.D in	1
	WiFi*	Built-in
	Factory-Installed Refrigerant Detection Sensor (RDS)	Yes
	Refrigerant	R454B
Refrigerant Line	Connections	Flare
	Liquid O.D. in	1/4
	Suction O.D. in	3/8
	Factory Charge Oz	46.6
Refrigerant Line	Maximum Line Length Ft / m	66/20
	Maximum Height Ft / m	33/10

For more information visit us:

GEAppliancesAirAndWater.com

©Copyright 2025 GE Appliances, a Haier Company.
Our continued commitment to quality products may mean a change in specifications without notice.

Condensate drain adapter shipped with indoor unit is designed to accept a 3/4" PVC pipe.

*WiFi includes SmartHQ™ Home and SmartHQ™ Service compatibility.

1Q09RT2BEA / US09MB2BEA

Heating Capacity Data

TC: Total Capacity PI: Power Input

Outdoor Air Temp DB	Indoor Temperature (°F, DB)																	
	60			65			70			75			80			86		
	TC (Btu/h)	PI (W)	COP	TC (Btu/h)	PI (W)	COP	TC (Btu/h)	PI (W)	COP	TC (Btu/h)	PI (W)	COP	TC (Btu/h)	PI (W)	COP	TC (Btu/h)	PI (W)	COP
-31°F (-35°C)	3,317	746	1.30	3,268	779	1.23	3,220	820	1.15	3,156	852	1.09	3,091	886	1.02	3,027	934	0.95
-22°F (-30°C)	4,027	788	1.50	3,969	822	1.42	3,910	865	1.32	3,832	900	1.25	3,754	935	1.18	3,675	986	1.09
-15°F (-26°C)	4,738	829	1.68	4,669	865	1.58	4,600	911	1.48	4,508	947	1.39	4,416	984	1.32	4,324	1,038	1.22
-5°F (-21°C)	5,974	1,017	1.72	5,887	1,062	1.62	5,800	1,118	1.52	5,684	1,163	1.43	5,568	1,207	1.35	5,452	1,274	1.25
0°F (-18°C)	6,695	1,055	1.86	6,598	1,101	1.76	6,500	1,159	1.64	6,370	1,206	1.55	6,240	1,252	1.46	6,110	1,321	1.36
5°F (-15°C)	8,240	1,187	2.04	8,120	1,239	1.92	8,000	1,304	1.80	7,840	1,356	1.69	7,680	1,408	1.60	7,520	1,487	1.48
14°F (-10°C)	8,240	1,111	2.17	8,120	1,160	2.05	8,000	1,221	1.92	7,840	1,270	1.81	7,680	1,319	1.71	7,520	1,392	1.58
23°F (-5°C)	9,270	1,074	2.53	9,135	1,121	2.39	9,000	1,180	2.24	8,820	1,227	2.11	8,640	1,274	1.99	8,460	1,345	1.84
32°F (0°C)	9,579	1,036	2.71	9,440	1,082	2.56	9,300	1,139	2.39	9,114	1,184	2.26	8,928	1,230	2.13	8,742	1,298	1.97
41°F (5°C)	10,926	914	3.50	10,767	954	3.31	10,608	1,005	3.10	10,396	1,045	2.92	10,184	1,085	2.75	9,972	1,145	2.55
47°F (8°C)	10,300	763	3.96	10,150	796	3.74	10,000	838	3.50	9,800	872	3.30	9,600	905	3.11	9,400	955	2.88
55°F (13°C)	10,094	721	4.10	9,947	756	3.86	9,800	800	3.59	9,604	835	3.71	9,408	870	3.17	9,212	923	2.93
65°F (18°C)	10,403	678	4.50	10,252	708	4.24	10,100	745	3.97	9,898	775	3.74	9,696	805	3.53	9,494	850	3.28
75°F (24°C)	11,124	735	4.44	10,962	767	4.19	10,800	807	3.92	10,584	840	3.69	10,368	872	3.49	10,152	920	3.23
86°F (30°C)	12,257	772	4.65	12,079	806	4.39	11,900	849	4.11	11,662	883	3.87	11,424	917	3.65	11,186	968	3.39

Cooling Capacity Data

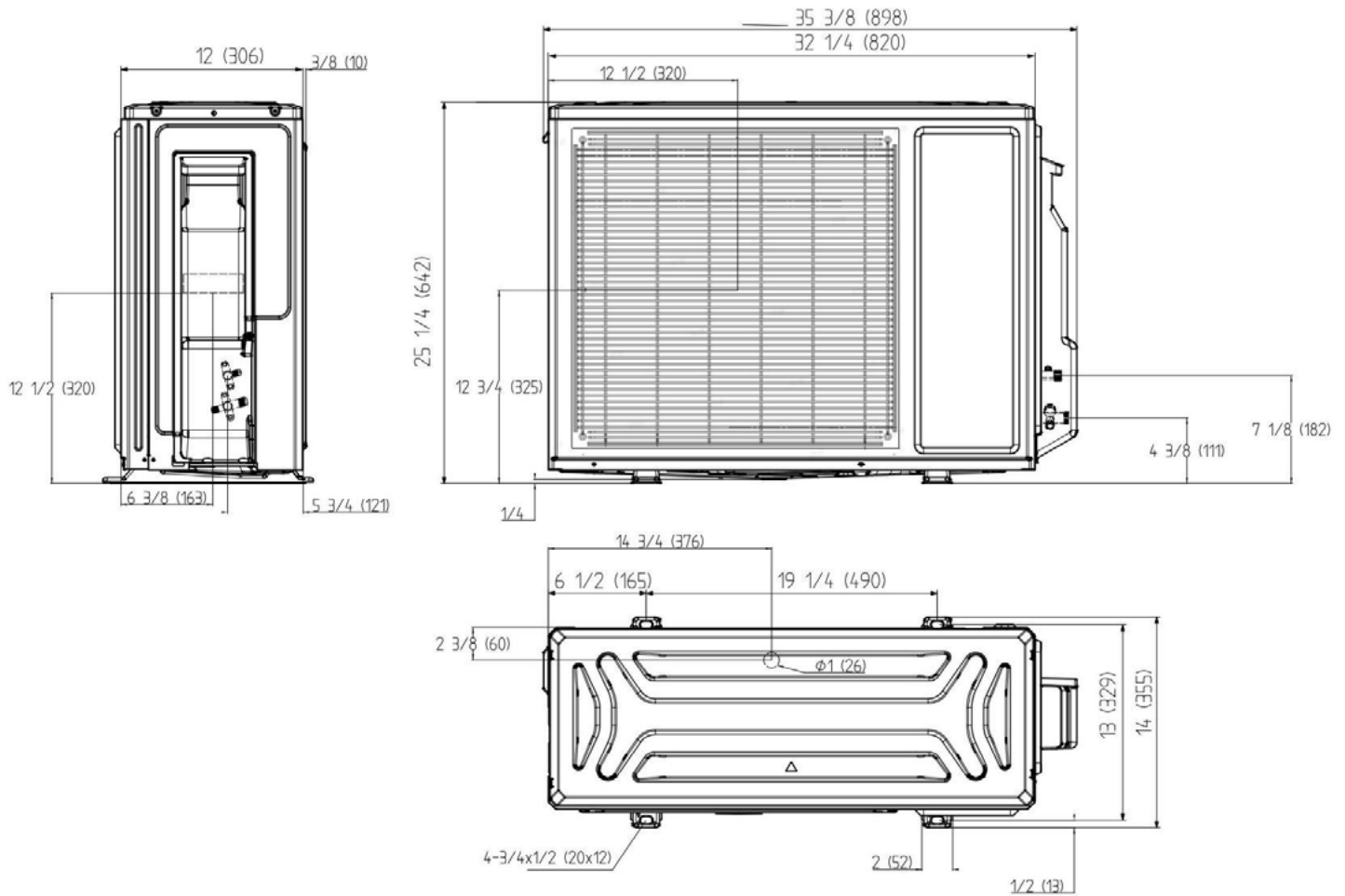
TC: Total Capacity PI: Power Input

Outdoor Air Temp DB	Indoor Temperature (°F, DB)																				
	60 / 50			64 / 53			70 / 57			75 / 62			80 / 67			86 / 72			90 / 75		
	TC (Btu/h)	PI (W)	EER2	TC (Btu/h)	PI (W)	EER2	TC (Btu/h)	PI (W)	EER2	TC (Btu/h)	PI (W)	EER2	TC (Btu/h)	PI (W)	EER2	TC (Btu/h)	PI (W)	EER2	TC (Btu/h)	PI (W)	EER2
23°F (-5°C)	5,609	260	6.32	5,904	270	6.41	6,347	280	6.64	6,790	290	6.86	7,380	300	7.21	7,823	310	7.40	8,192	320	7.50
32°F (0°C)	6,293	290	6.36	6,624	300	6.47	7,121	310	6.73	7,618	320	6.98	8,280	330	7.35	8,777	340	7.57	9,191	350	7.70
50°F (10°C)	6,703	330	5.95	7,056	340	6.08	7,585	350	6.35	8,114	360	6.61	8,820	370	6.99	9,349	380	7.21	9,790	390	7.36
68°F (20°C)	7,250	480	4.43	7,632	490	4.56	8,204	500	4.81	8,777	510	5.04	9,540	520	5.38	10,112	530	5.59	10,589	540	5.75
86°F (30°C)	7,045	630	3.28	7,416	640	3.40	7,972	650	3.59	8,528	660	3.79	9,270	670	4.06	9,826	680	4.24	10,290	690	4.37
95°F (35°C)	6,840	710	2.82	7,200	720	2.93	7,740	730	3.11	8,280	740	3.28	9,000	750	3.52	9,540	760	3.68	9,990	770	3.80
104°F (40°C)	5,882	690	2.50	6,192	700	2.59	6,656	710	2.75	7,121	720	2.90	7,740	730	3.11	8,204	740	3.25	8,591	750	3.36
110°F (43°C)	5,609	740	2.22	5,904	750	2.31	6,347	760	2.45	6,790	770	2.58	7,380	780	2.77	7,823	790	2.90	8,192	800	3.00
115°F (46°C)	5,335	790	1.98	5,616	800	2.06	6,037	810	2.18	6,458	820	2.31	7,020	830	2.48	7,441	840	2.60	7,792	850	2.69

Heating and cooling capacities and power usage are measured under the assumption of indoor humidity of 46%.

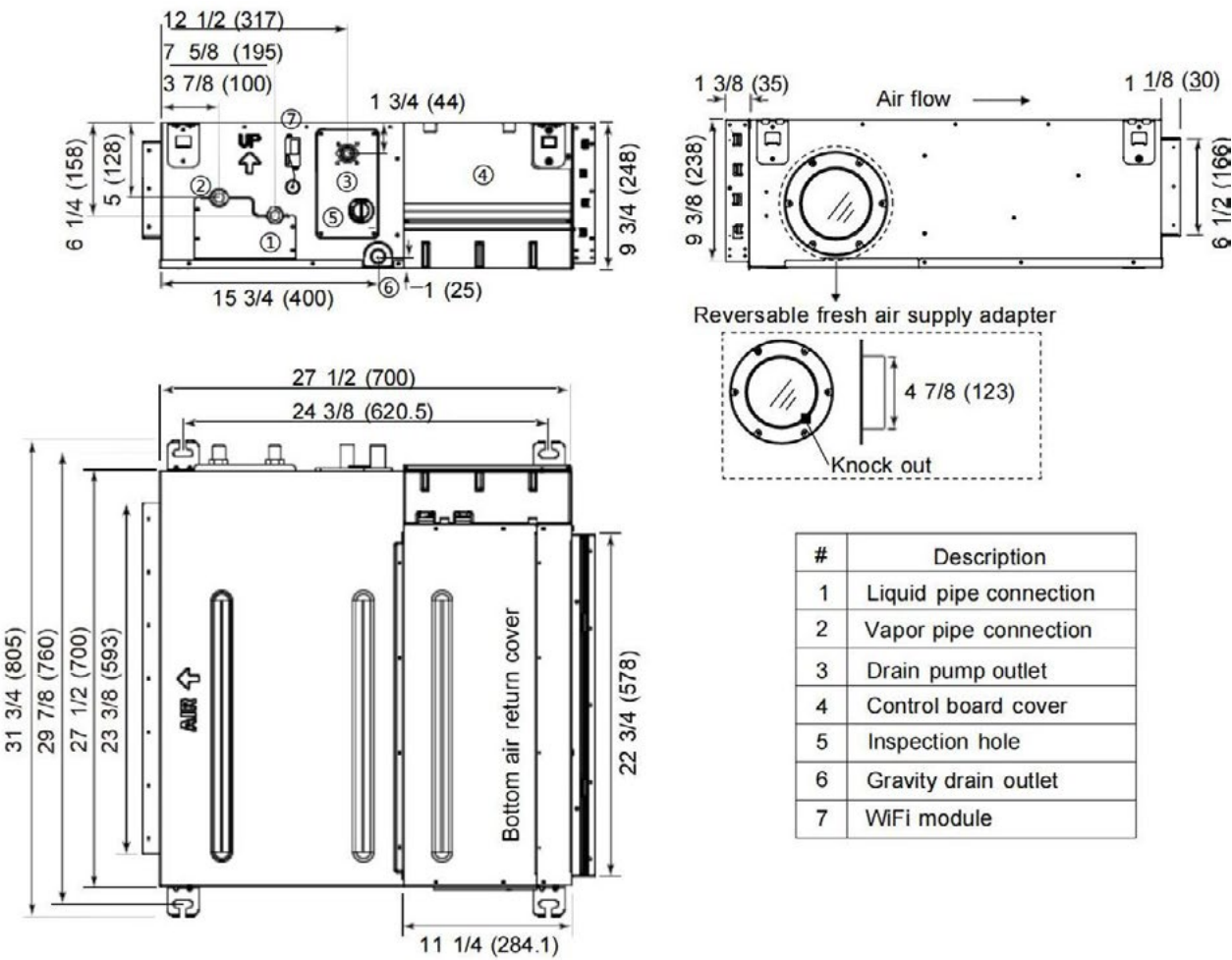
*Cooling capacities under low ambient temperatures below 23°F (-5°C) are tested when using wind baffle on outdoor unit.

1Q09RT2BEA



Note: Dimensions are shown in inches (millimeters)

US09MB2BEA



Note: Dimensions are shown in inches (millimeters)

SUBMITTAL REVISION HISTORY

03-11-25: Submittal release.