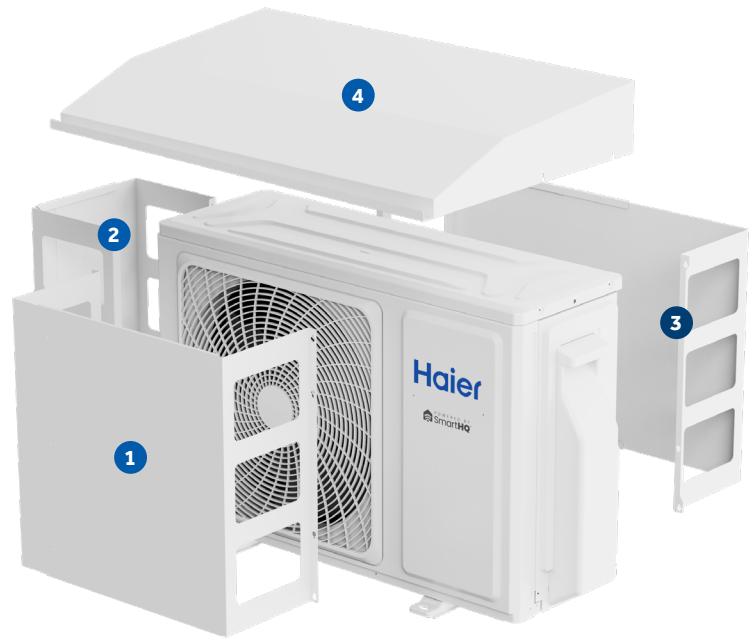


## Wind Baffles & Top Covers

Operating Conditions	Recommended Accessories			
	1 Front Wind Baffle	2 Side Wind Baffle	3 Back Wind Baffle	4 Top Cover
Low Ambient Cooling below 23°F (5°C) (server/mechanical room)	Required	Required	Required	Required
Low Ambient Heating below 5°F (-15°C)	-	Strongly Recommended	Strongly Recommended	Strongly Recommended
Unit installed on a flat roof or facing prevailing wind	Required	-	-	-

Fabricated from durable 20 gauge G90 galvanized steel and engineered to provide optimal performance when operating the outdoor unit in cold, harsh climates.

A front wind baffle is required for all climates when mounted on a flat roof or facing prevailing winds.



## Outdoor Unit Accessory Compatibility Table

	OUTDOOR UNITS																								
	TEMPO					FLEXFIT					ARCTIC				ARCTIC MULTI			FLEXFIT MULTI							
	115V		230V																						
	1Q09TE1BEA	1Q12TE1BEA	1Q09TE2BEA	1Q12TE2BEA	1Q18TE2BEA	1Q24TE2BEA	1Q09FF2BEA	1Q12FF2BEA	1Q15FF2BEA	1Q18FF2BEA	1Q24FF2BEA	1Q3036FF2BEA	1Q09RT2BEA	1Q12RT2BEA	1Q18RT2BEA	1Q24RT2BEA	1Q3036RT2BEA	2Q20RT2BEA	3Q24RT2BEA	4Q36RT2BEA	5Q42RT2BEA	2Q18FF2BEA	3Q24FF2BEA	4Q36FF2BEA	
FRONT OR BACK WIND BAFFLES (If both a front and back wind baffle are needed, order two (2) of the required part)																									
UAWB15WA	●	●	●	●	●		●	●	●	●			●	●											
UAWB30WA						●						●	●		●								●	●	
UAWB31WA																●		●	●						●
UAWB51WA																	●			●	●				
SIDE WIND BAFFLES																									
UASWB15WA	●	●	●	●	●		●	●	●	●			●	●											
UASWB30WA						●						●	●		●								●	●	
UASWB31WA																●		●	●						●
UASWB51WA																	●			●	●				
TOP COVERS																									
UATC15WA	●	●	●	●			●	●																	
UATC20WA					●				●	●			●	●											
UATC21WA																							●	●	
UATC30WA															●										
UATC31WA																●		●	●						●
UATC35WA						●					●	●													
UATC51WA																	●			●	●				
5" CENTRAL CONTROLLER																									
UACT32A	●	●	●	●	●	●	●	●	●	●	●	●	●	●	●	●	●	●	●	●	●	●	●	●	●



## Cassette Panels

Required for cassette indoor units; sold separately.  
Remote controller (WJ26X35394) is included with cassette panel.



### QACCP01WA

Compact Cassette Panel

*Fits Models:*  
US09CB2BEA  
US12CB2BEA  
US18CB2BEA



### QALCP01WA

Large Cassette Panel

*Fits Models:*  
US24LB2BEA  
US30LB2BEA  
US36LB2BEA

## Refrigerant Detection Sensor (RDS)



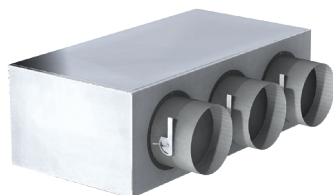
### UALS01A

Ductless Refrigerant Detection Sensor

Note: See room sizing requirements to determine if the Refrigerant Detection Sensor (RDS) is required and needs to be purchased separately for highwall and cassette indoor units. RDS is factory-installed on console and ducted units.

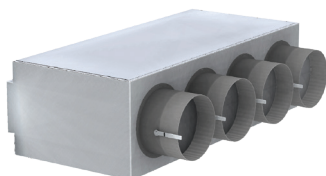
## Supply Plenums

Supply plenums for ducted indoor models.



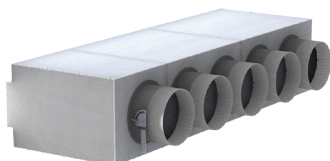
### UAPT0912A

*Fits Models:*  
US09MB2BEA  
US12MB2BEA



### UAPT1824A

*Fits Models:*  
US18MB2BEA  
US24MB2BEA

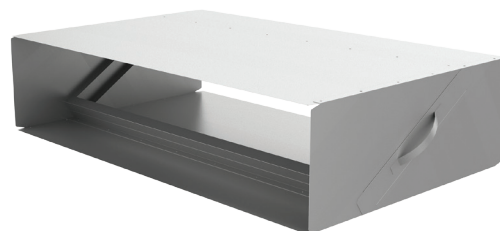


### UAPT3048A

*Fits Models:*  
US30MB2BEA  
US36MB2BEA  
US42MB2BEA  
US48MB2BEA

## Merv Return Air Filter Boxes

MERV return air filter boxes for ducted indoor models.



### UAMFB0912A

*Fits Models:*  
US09MB2BEA  
US12MB2BEA

### UAMFB1824A

*Fits Models:*  
US18MB2BEA  
US24MB2BEA

### UAMFB3048A

*Fits Models:*  
US30MB2BEA  
US36MB2BEA  
US42MB2BEA  
US48MB2BEA



GE APPLIANCES  
a Haier company

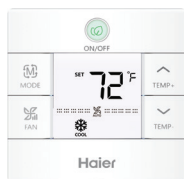
AIR & WATER  
SOLUTIONS

www.GEAppliancesAirAndWater.com

## Controllers

Controllers from Haier allow you to take command of your environment. With convenient user-friendly button layouts and clear digital displays, the system can be easily set to meet and maintain comfort levels.

### Wired Controller



Compatible with all indoor unit types.

	QACT17B
Power Supply	12V AC
Controllable Indoor Groups	Up to 16
On/Off	•
Modes	Auto-Cool-Dry-Heat-Fan-Auto
Precise Temperature Control +/- 1°F (+/- 0.5°C)	•
Fan Speed Adjustment	•
Turbo	•
Quiet	•
Airflow Direction - Up/Down	•
Airflow Direction - Left/Right	•
Four-Way Cassette Blade Control	
Indoor Temperature Display	•
Filter Change Reminder	500 hr
Clock	
Error Code Reporting/ Recording	•
Control Lock	•
Daily Program	
Weekly Program	
Sleep	
Backlight	•
Fahrenheit/Celsius Display	•
Temperature Range Limit	•
Temperature Compensation	•
Static Pressure Setting	•
Groups Setting	•
Password	

### Remote Controllers



Ships with standard highwalls.



Ships with consoles.



Ships with premium highwalls & cassette panels.

	WJ26X35393	WJ26X35813	WJ26X35394
Individual Control	•	•	•
Backlight	•	•	•
Up/Down Louver Oscillating Control	•	•	•
Left/Right Louver Oscillating Control			•
Four-Way Cassette Air Supply Control			•
Child Lock	•	•	•
Indoor LED Display On/Off	•	•	•
Fahrenheit/Celsius Display	•	•	•
Precise Temperature Control +/- 1°F (+/- 0.5°C)	•	•	•
Motion Sensor			•

### 5" Central Controller

#### 5" LED Touch Screen

A vibrant and intuitive interface for easy navigation and control.

#### Integration Capability

Seamlessly integrates both ductless and central HVAC systems for unified management.

#### Multi-Zone Control

Manages up to 31 ductless zones and 1 central 24V HVAC zone, providing comprehensive climate control.



	UACT32A
Screen Saving	•
Backlight	•
Power Supply	24VAC*
Max. IDUs Controllable	31 + (1) 24VAC Central Zone
Indoor/Set-Point Temperature Display	•
Interlock Input	•
Interlock Output Dry Contact	•
Temperature Set Range	60-86°F (16-30°C)
Zones	Up to 31 Zones
Modes	Cool, Heat, Auto, Dry, Fan
Fan Speeds	Low, Med, High
Group Control	•
Individual IDU Control	•
Dual System Rotational Operation	•
Temperature Set Range	40-99°F (5-37°C)
Humidity	Display in %
Mode	Cool, Heat, Auto
Fan Speed	Auto, Circulating, On
WiFi/Alexa/Google Home	•

\*if not connecting to 24V central HVAC system, a field supplied 24VAC transformer is needed.








GE APPLIANCES  
a Haier company

AIR&WATER  
SOLUTIONS

www.GEAppliancesAirAndWater.com

## Indoor Unit Accessory Compatibility Table

		Remote Controllers			Wired Controller	Refrigerant Detection Sensor (RDS)
						
	Model Number	WJ26X35393	WJ26X35813	WJ26X35394	QACT17B	UALS01A
Caliber 115V Highwall	QS09WB1BEA	●			○	○
	QS12WB1BEA	●			○	○
Standard Highwall	QS07WB2BEA	●			○	○
	QS09WB2BEA	●			○	○
	QS12WB2BEA	●			○	○
	QS15WB2BEA	●			○	○
	QS18WB2BEA	●			○	○
	QS24WB2BEA	●			○	○
	QS30WB2BEA	●			○	○
	QS36WB2BEA	●			○	○
Premium Highwall	QS09WP2BEA			●	○	○
	QS12WP2BEA			●	○	○
	QS18WP2BEA			●	○	○
	QS24WP2BEA			●	○	○
Compact Cassette	US09CB2BEA					○
	US12CB2BEA					○
	US18CB2BEA					○
	QACCP01WA*			●	○	
Large Cassette	US24LB2BEA					○
	US30LB2BEA					○
	US36LB2BEA					○
	QALCP01WA*			●	○	
Console	US09FB2BEA		●		○	●
	US12FB2BEA		●		○	●
	US18FB2BEA		●		○	●
Mid-Static Ducted	US09MB2BEA				⊙	●
	US12MB2BEA				⊙	●
	US18MB2BEA				⊙	●
	US24MB2BEA				⊙	●
	US30MB2BEA				⊙	●
	US36MB2BEA				⊙	●
	US42MB2BEA				⊙	●
US48MB2BEA				⊙	●	

\*Cassette Panel

● = Included   ⊙ = Required, sold separately   ○ = Optional; sold separately

See Outdoor Unit Accessory Compatibility Table for 5" Central Controller compatibility



**GE APPLIANCES**  
a Haier company

**AIR&WATER**  
SOLUTIONS

©Copyright 2025 GE Appliances, a Haier Company. Our continued commitment to quality products may mean a change in specifications without notice.

[www.GEAppliancesAirAndWater.com](http://www.GEAppliancesAirAndWater.com)

Pub No. 25-HDAG01  
Rev. 05-21-2025