

Job Name: _____

Purchaser: _____

Submitted To: _____

Construction: _____

Reference: _____

Approval: _____

Date: _____

Submitted By: _____

Unit: _____

Drawing #: _____



Outdoor Model:
1Q12FF2BEA



Indoor Model:
QS12WB2BEA



Outdoor Accessories

Front Wind Baffle	UAWB15WA
Side Wind Baffle	UASWB15WA
Back Wind Baffle	UAWB15WA
Top Cover	UATC15WA
Central Controller	UACT32A

Indoor Accessories

Wired Controller	QACT17B
Refrigerant Detection Sensor (RDS)	UALS01A
Remote Controller	WJ26X35393

Specifications

Operating Range	Cooling (Without Wind Baffle or Top Cover)	23 ~ 115°F (-5 ~ 46°C)
	Cooling (With Wind Baffle or Top Cover)	-40 ~ 115°F (-40 ~ 46°C)
	Heating	-15 ~ 75°F (-26 ~ 24°C)
Power	Voltage, Cycle, Phase (V/Hz/-)	208-230/60/1
	Operating Voltage Range	187-253 VAC
Cooling	Rated Capacity Btu/hr	11,800
	Capacity Range Btu/hr	3,400-13,000
	SEER2 / EER2	21 / 12
	Rated Power Input W	983
Heating	Moisture Removal Pt./hr	2.7
	Rated Heating Capacity 47°F Btu/hr	13,000
	Heating Capacity Range Btu/hr	3,200-14,000
	COP 5°F	1.8
Outdoor Unit	HSPF2 (IV)	9.5
	Rated Power Input W	1,089
	Compressor Type	DC Inverter Rotary
	Maximum Fuse Size A	10
Indoor Unit	Minimum Circuit Amp A	9
	Outdoor Noise Level dB	55
	Dimension: H x W x D in (mm)	21 3/4 x 34 x 11 (553 x 863 x 280)
	Carton Dimension: H x W x D in (mm)	24 3/8 x 36 5/8 x 16 (618 x 929 x 407)
Indoor Unit	Weight (Net/Ship) - lbs (kg)	70.17/82.96 (31.8/37.6)
	Basepan Heater	Yes
	Fan Speed Stages	5 + Auto
	Airflow CFM: Cooling (Turbo/High/Med/Low/Quiet)	360/300/272/240/210
Indoor Unit	Indoor Motor Speed RPM: Cooling (Turbo/High/Med/Low/Quiet)	1250/1100/1000/900/750
	Indoor Sound Level dB: Cooling (Turbo/High/Med/Low/Quiet)	44/39/36/33/27
	Airflow CFM: Heating (Turbo/High/Med/Low/Quiet)	350/290/260/230/200
	Indoor Motor Speed RPM: Heating (Turbo/High/Med/Low/Quiet)	1200/1020/920/820/700
Indoor Unit	Indoor Sound Level dB: Heating (Turbo/High/Med/Low/Quiet)	42/36/32/29/25
	Dimension: H x W x D in (mm)	11 7/8 x 34 1/4 x 7 3/4 (301 x 870 x 196)
	Carton Dimension: H x W x D in (mm)	11 1/8 x 37 1/2 x 15 3/8 (283 x 952 x 389)
	Weight (Net/Ship) - lbs (kg)	21.84/26.92 (9.9/12.2)
Refrigerant Lines	Drain Pipe Size O.D in	5/8
	WiFi*	Built-in
	Factory-Installed Refrigerant Detection Sensor (RDS)	No
	Refrigerant Detection Sensor (RDS) Compatible	Yes (UALS01A, sold separately)
Refrigerant Lines	Refrigerant	R454B
	Connections	Flare
	Liquid O.D. in	1/4
	Suction O.D. in	3/8
Refrigerant Lines	Factory Charge Oz	36.5
	Maximum Line Length Ft / m	66/20
Refrigerant Lines	Maximum Height Ft / m	33/10

For more information visit us:

GEAppliancesAirAndWater.com

©Copyright 2025 GE Appliances, a Haier Company.
Our continued commitment to quality products may mean a change in specifications without notice.

*WiFi includes SmartHQ™ Home and SmartHQ™ Service compatibility.

1Q12FF2BEA / QS12WB2BEA

Heating Capacity Data

TC: Total Capacity PI: Power Input

Outdoor Air Temp DB	Indoor Temperature (°F, DB)																				
	60			64			68			70			72			75			79		
	TC (Btu/h)	PI (W)	COP	TC (Btu/h)	PI (W)	COP	TC (Btu/h)	PI (W)	COP	TC (Btu/h)	PI (W)	COP	TC (Btu/h)	PI (W)	COP	TC (Btu/h)	PI (W)	COP	TC (Btu/h)	PI (W)	COP
-15°F (-26°C)	9,090	1,353	1.97	8,546	1,381	1.81	8,289	1,409	1.72	8,040	1,438	1.64	7,798	1,467	1.56	7,563	1,497	1.48	7,110	1,528	1.36
-5°F (-21°C)	10,273	1,488	2.02	9,657	1,518	1.86	9,367	1,549	1.77	9,085	1,581	1.68	8,812	1,613	1.60	8,547	1,646	1.52	8,035	1,680	1.40
0°F (-18°C)	10,889	1,578	2.02	10,237	1,610	1.86	9,929	1,643	1.77	9,630	1,676	1.68	9,341	1,710	1.60	9,060	1,745	1.52	8,517	1,781	1.40
5°F (-15°C)	11,759	1,593	2.16	11,055	1,626	1.99	10,722	1,659	1.89	10,400	1,693	1.80	10,087	1,728	1.71	9,784	1,763	1.63	9,198	1,799	1.50
14°F (-10°C)	12,464	1,600	2.28	11,718	1,632	2.10	11,366	1,666	2.00	11,024	1,700	1.90	10,692	1,734	1.81	10,371	1,770	1.72	9,750	1,806	1.58
23°F (-5°C)	13,212	1,606	2.41	12,421	1,639	2.22	12,048	1,672	2.11	11,685	1,707	2.01	11,334	1,741	1.91	10,993	1,777	1.81	10,335	1,813	1.67
32°F (0°C)	14,005	1,537	2.67	13,166	1,568	2.46	12,770	1,600	2.34	12,386	1,633	2.22	12,014	1,666	2.11	11,653	1,700	2.01	10,955	1,735	1.85
41°F (5°C)	14,845	1,397	3.11	13,956	1,426	2.87	13,537	1,455	2.73	13,130	1,485	2.59	12,735	1,515	2.46	12,352	1,546	2.34	11,612	1,577	2.16
47°F (8°C)	14,699	1,025	4.20	13,818	1,046	3.87	13,403	1,067	3.68	13,000	1,089	3.50	12,609	1,111	3.33	12,230	1,134	3.16	11,498	1,157	2.91
55°F (13°C)	15,139	1,030	4.31	14,233	1,051	3.97	13,805	1,073	3.77	13,390	1,094	3.59	12,987	1,117	3.41	12,597	1,140	3.24	11,842	1,163	2.98
65°F (18°C)	15,593	1,035	4.41	14,659	1,056	4.07	14,218	1,078	3.87	13,791	1,100	3.67	13,376	1,122	3.49	12,974	1,145	3.32	12,197	1,169	3.06
75°F (24°C)	16,060	1,040	4.52	15,099	1,062	4.17	14,645	1,083	3.96	14,204	1,105	3.77	13,777	1,128	3.58	13,363	1,151	3.40	12,563	1,175	3.13

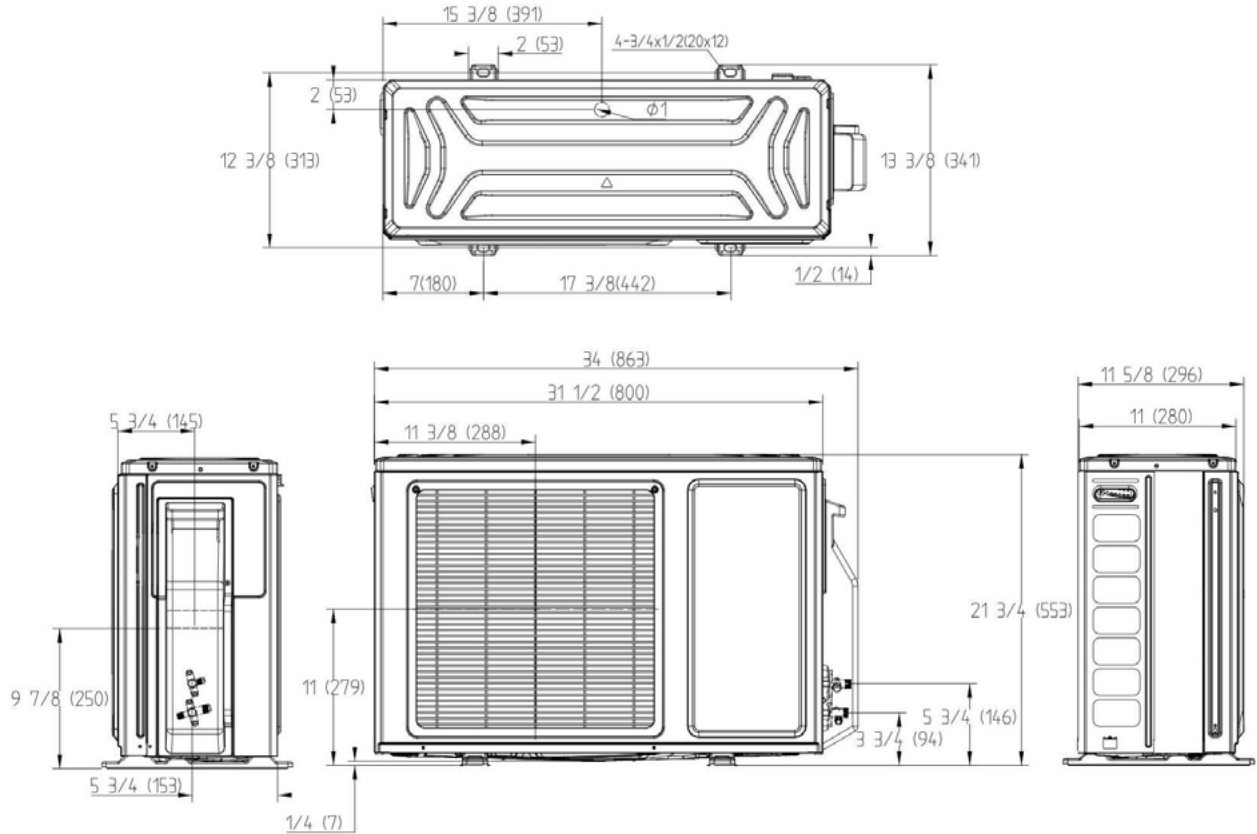
Cooling Capacity Data

TC: Total Capacity PI: Power Input

Outdoor Air Temp DB	Indoor Temperature (°F, DB)																				
	64 / 53			68 / 57			72 / 61			77 / 64			80 / 67			82 / 70			86 / 72		
	TC (Btu/h)	PI (W)	EER2	TC (Btu/h)	PI (W)	EER2	TC (Btu/h)	PI (W)	EER2	TC (Btu/h)	PI (W)	EER2	TC (Btu/h)	PI (W)	EER2	TC (Btu/h)	PI (W)	EER2	TC (Btu/h)	PI (W)	EER2
-40°F (-40°C)	9,964	702	14.18	10,395	677	15.36	10,845	651	16.65	11,315	627	18.05	11,805	604	19.56	12,316	582	21.17	12,849	561	22.91
-22°F (-30°C)	10,132	717	14.14	10,571	691	15.30	11,029	665	16.59	11,506	640	17.99	12,004	616	19.49	12,524	594	21.10	13,066	572	22.84
-15°F (-26°C)	10,304	731	14.09	10,750	705	15.25	11,215	678	16.54	11,701	653	17.92	12,207	628	19.42	12,736	606	21.03	13,287	584	22.76
-4°F (-20°C)	10,478	746	14.04	10,931	719	15.20	11,405	692	16.48	11,898	666	17.86	12,414	641	19.36	12,951	618	20.96	13,512	596	22.68
5°F (-15°C)	10,655	762	13.99	11,116	734	15.15	11,597	706	16.42	12,100	680	17.80	12,623	654	19.29	13,170	631	20.88	13,740	608	22.60
14°F (-10°C)	10,835	777	13.94	11,304	749	15.10	11,793	721	16.37	12,304	694	17.74	12,837	668	19.22	13,393	644	20.81	13,972	620	22.52
23°F (-5°C)	11,018	793	13.89	11,495	764	15.04	11,993	735	16.31	12,512	708	17.68	13,054	681	19.16	13,619	657	20.74	14,209	633	22.45
32°F (0°C)	10,798	873	12.36	11,265	842	13.39	11,753	810	14.51	12,262	779	15.73	12,793	750	17.05	13,347	723	18.46	13,924	697	19.97
50°F (10°C)	10,582	952	11.11	11,040	918	12.03	11,518	883	13.04	12,017	850	14.14	12,537	818	15.32	13,080	789	16.59	13,646	760	17.95
68°F (20°C)	10,370	1,029	10.08	10,819	991	10.92	11,288	954	11.84	11,776	918	12.83	12,286	884	13.90	12,818	852	15.05	13,373	821	16.29
86°F (30°C)	10,163	1,100	9.24	10,603	1,060	10.00	11,062	1,020	10.85	11,541	982	11.76	12,041	945	12.74	12,562	911	13.79	13,106	878	14.93
95°F (35°C)	9,960	1,144	8.71	10,391	1,102	9.43	10,841	1,061	10.22	11,310	1,021	11.08	11,800	983	12.00	12,311	947	13.00	12,844	913	14.06
104°F (40°C)	9,761	1,190	8.20	10,183	1,147	8.88	10,624	1,103	9.63	11,084	1,062	10.44	11,564	1,022	11.31	12,065	985	12.25	12,587	950	13.25
110°F (43°C)	9,663	1,214	7.96	10,081	1,170	8.62	10,518	1,126	9.34	10,973	1,084	10.13	11,448	1,043	10.97	11,944	1,005	11.88	12,461	969	12.86
115°F (46°C)	9,566	1,251	7.65	9,981	1,205	8.28	10,413	1,160	8.98	10,864	1,116	9.73	11,334	1,075	10.54	11,825	1,036	11.42	12,337	999	12.35

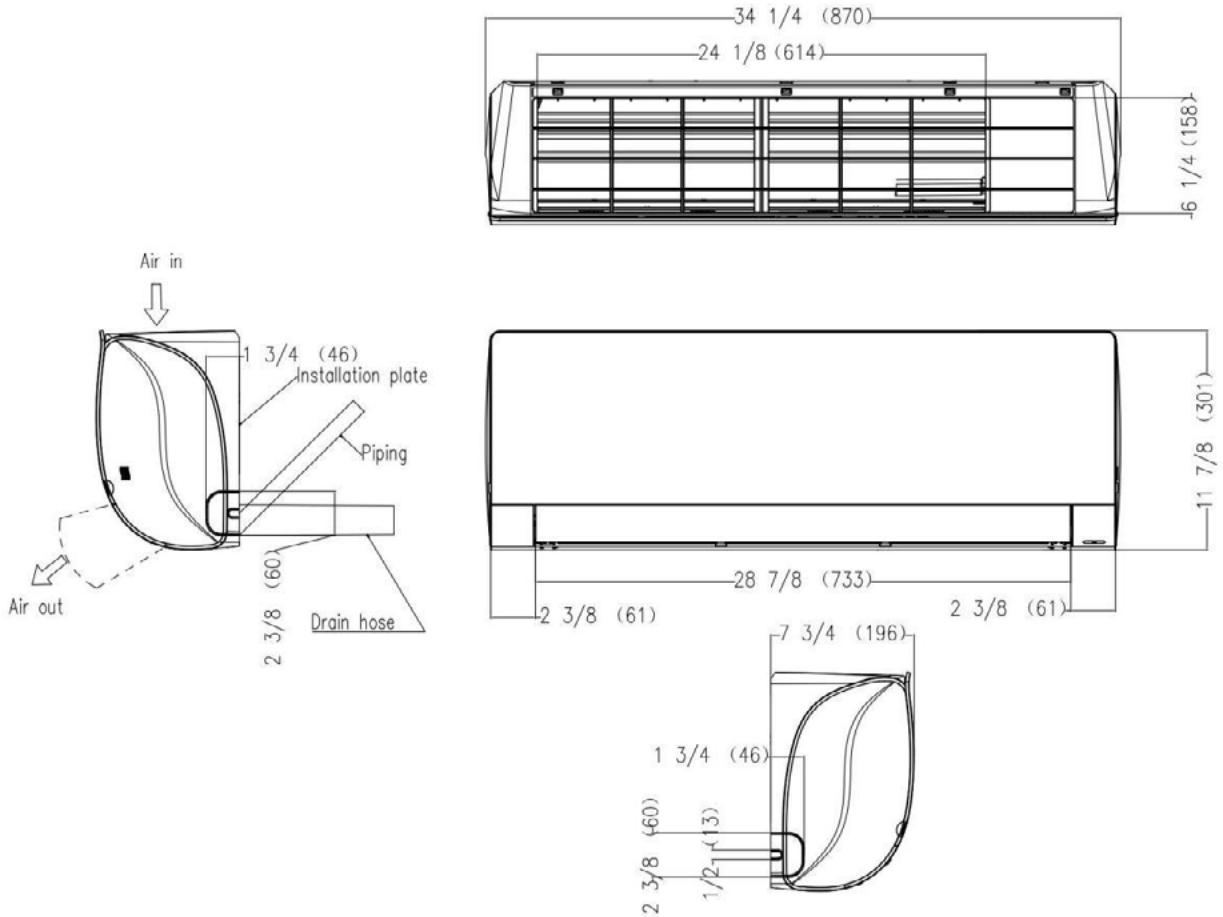
*Front/side/back wind baffle and top cover accessories are required for low ambient cooling below 23°F (-5°C).

1Q12FF2BEA



Note: Dimensions are shown in inches (millimeters)

QS12WB2BEA



Note: Dimensions are shown in inches (millimeters)

Job Name: _____

Purchaser: _____

Submitted To: _____

Construction: _____

Reference: _____

Approval: _____

Date: _____

Submitted By: _____

Unit: _____

Drawing #: _____



Outdoor Model:
1Q12FF2BEA



Indoor Model:
US12CB2BEA



Outdoor Accessories

Front Wind Baffle	UAWB15WA
Side Wind Baffle	UASWB15WA
Back Wind Baffle	UAWB15WA
Top Cover	UATC15WA
Central Controller	UACT32A

Indoor Accessories

Cassette Panel (Required)	QACCP01WA
Wired Controller	QACT17B
Refrigerant Detection Sensor (RDS)	UALS01A
Remote Controller	WJ26X35394

For more information visit us:

GEAppliancesAirAndWater.com

©Copyright 2025 GE Appliances, a Haier Company.
Our continued commitment to quality products may mean a change in specifications without notice.



Specifications

Operating Range	Cooling (Without Wind Baffle or Top Cover)	23 ~ 115°F (-5 ~ 46°C)
	Cooling (With Wind Baffle or Top Cover)	-40 ~ 115°F (-40 ~ 46°C)
	Heating	-15 ~ 75°F (-26 ~ 24°C)
Power	Voltage, Cycle, Phase (V/Hz/-)	208-230/60/1
	Operating Voltage Range	187-253 VAC
Cooling	Rated Capacity Btu/hr	12,000
	Capacity Range Btu/hr	3,400-13,000
	SEER2 / EER2	19.8 / 12
	Rated Power Input W	1,000
	Moisture Removal Pt./hr	3.2
Heating	Rated Heating Capacity 47°F Btu/hr	12,500
	Heating Capacity Range Btu/hr	3,200-14,000
	COP 5°F	1.8
	HSPF2 (IV)	9.5
	Rated Power Input W	1,145
Outdoor Unit	Compressor Type	DC Inverter Rotary
	Maximum Fuse Size A	10
	Minimum Circuit Amp A	9
	Outdoor Noise Level dB	55
	Dimension: H x W x D in (mm)	21 3/4 x 34 x 11 (553 x 863 x 280)
	Carton Dimension: H x W x D in (mm)	24 3/8 x 36 5/8 x 16 (618 x 929 x 407)
	Weight (Net/Ship) - lbs (kg)	70.17/82.96 (31.8/37.6)
Indoor Unit	Basepan Heater	Yes
	Fan Speed Stages	5 + Auto
	Airflow CFM: Cooling (Turbo/High/Med/Low/Quiet)	440/387/351/320/290
	Indoor Motor Speed RPM: Cooling (Turbo/High/Med/Low/Quiet)	830/760/690/620/560
	Indoor Sound Level dB: Cooling (Turbo/High/Med/Low/Quiet)	44/43/40/34/31
	Airflow CFM: Heating (Turbo/High/Med/Low/Quiet)	440/387/351/320/290
	Indoor Motor Speed RPM: Heating (Turbo/High/Med/Low/Quiet)	830/760/690/620/560
	Indoor Sound Level dB: Heating (Turbo/High/Med/Low/Quiet)	43/41/39/33/30
	Dimension: H x W x D in (mm)	10 1/4 x 22 3/4 x 22 3/4 (260 x 575 x 575)
	Carton Dimension: H x W x D in (mm)	27 7/8 x 25 3/4 x 14 1/4 (708 x 652 x 360)
	Weight (Net/Ship) - lbs (kg)	32.41/47.4 (14.7/21.5)
	Drain Pipe Size O.D in	1*
	Max. Drain-Lift Height in (mm)	47 1/4 (1200)
	WiFi**	Built-in
	Factory-Installed Refrigerant Detection Sensor (RDS)	No
Refrigerant Lines	Refrigerant Detection Sensor (RDS) Compatible	Yes (UALS01A, sold separately)
	Refrigerant	R454B
	Connections	Flare
	Liquid O.D. in	1/4
	Suction O.D. in	3/8
	Factory Charge Oz	36.5
	Maximum Line Length Ft / m	66/20
	Maximum Height Ft / m	33/10

*Condensate drain adapter shipped with indoor unit is designed to accept a 3/4" PVC pipe.

**WiFi includes SmartHQ™ Home and SmartHQ™ Service compatibility.

1Q12FF2BEA / US12CB2BEA

Heating Capacity Data

TC: Total Capacity PI: Power Input

Outdoor Air Temp DB	Indoor Temperature (°F, DB)																				
	60			64			68			70			72			75			79		
	TC (Btu/h)	PI (W)	COP	TC (Btu/h)	PI (W)	COP	TC (Btu/h)	PI (W)	COP	TC (Btu/h)	PI (W)	COP	TC (Btu/h)	PI (W)	COP	TC (Btu/h)	PI (W)	COP	TC (Btu/h)	PI (W)	COP
-15°F (-26°C)	5,387	834	1.89	5,064	851	1.74	4,912	868	1.66	4,764	886	1.58	4,621	904	1.50	4,482	923	1.42	4,214	942	1.31
-5°F (-21°C)	6,486	914	2.08	6,098	932	1.92	5,914	951	1.82	5,737	971	1.73	5,564	991	1.65	5,397	1,011	1.56	5,074	1,031	1.44
0°F (-18°C)	7,585	986	2.25	7,131	1,007	2.08	6,917	1,027	1.97	6,709	1,048	1.88	6,507	1,069	1.78	6,311	1,091	1.69	5,933	1,114	1.56
5°F (-15°C)	9,893	1,341	2.16	9,301	1,369	1.99	9,021	1,397	1.89	8,750	1,425	1.80	8,487	1,454	1.71	8,232	1,484	1.63	7,739	1,514	1.50
14°F (-10°C)	9,014	979	2.70	8,474	999	2.49	8,219	1,019	2.36	7,972	1,040	2.25	7,732	1,061	2.14	7,500	1,083	2.03	7,051	1,105	1.87
23°F (-5°C)	10,003	826	3.55	9,404	843	3.27	9,121	861	3.11	8,847	878	2.95	8,581	896	2.81	8,323	914	2.67	7,824	933	2.46
32°F (0°C)	10,333	798	3.80	9,714	814	3.50	9,422	831	3.32	9,138	847	3.16	8,864	865	3.00	8,597	882	2.86	8,082	900	2.63
41°F (5°C)	11,322	791	4.20	10,644	807	3.87	10,324	823	3.67	10,014	840	3.49	9,713	857	3.32	9,420	875	3.16	8,856	893	2.91
47°F (8°C)	14,133	1,078	3.84	13,287	1,100	3.54	12,888	1,122	3.37	12,500	1,145	3.20	12,124	1,168	3.04	11,760	1,192	2.89	11,055	1,217	2.66
55°F (13°C)	13,781	917	4.41	12,955	935	4.06	12,566	954	3.86	12,188	974	3.67	11,822	994	3.49	11,466	1,014	3.31	10,779	1,035	3.05
65°F (18°C)	14,416	777	5.44	13,553	793	5.01	13,146	809	4.76	12,750	825	4.53	12,367	842	4.30	11,995	859	4.09	11,277	877	3.77
75°F (24°C)	15,123	841	5.27	14,217	858	4.86	13,790	876	4.62	13,375	894	4.39	12,973	912	4.17	12,583	930	3.96	11,829	949	3.65

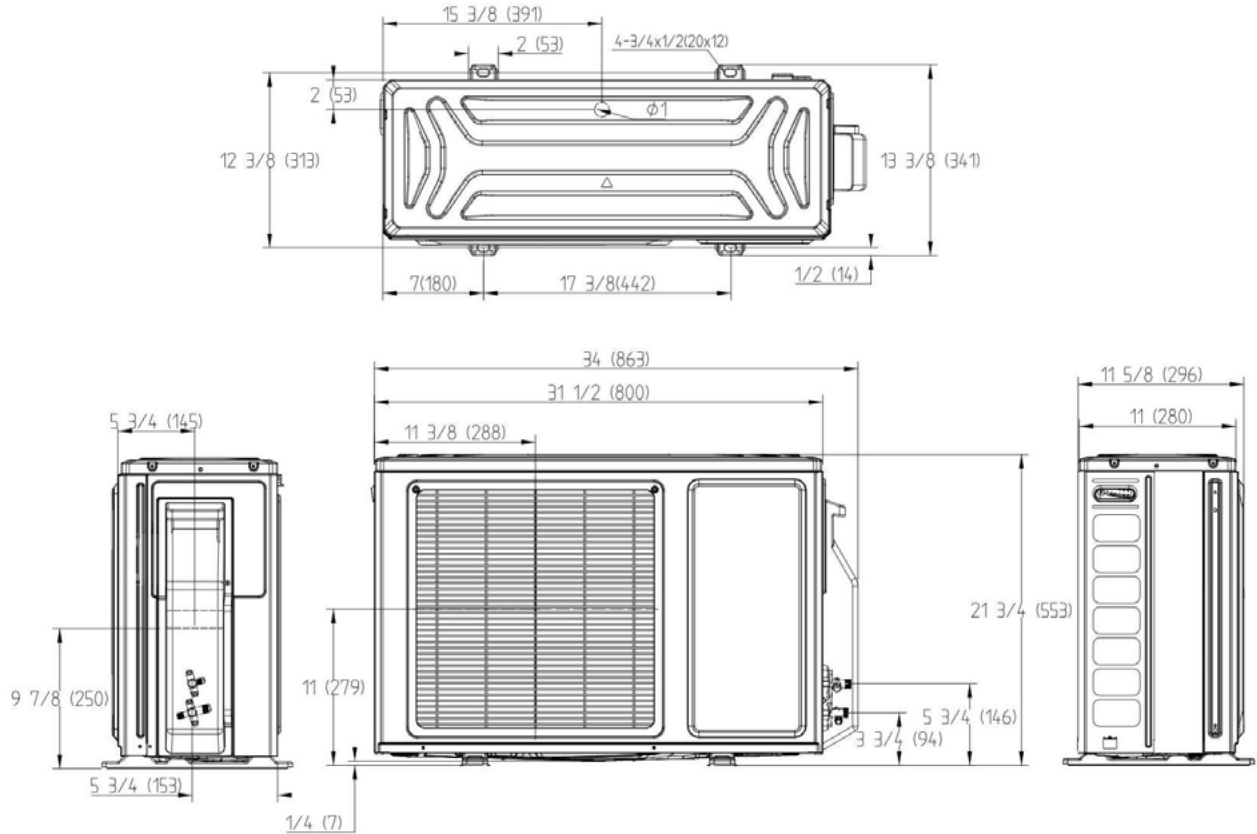
Cooling Capacity Data

TC: Total Capacity PI: Power Input

Outdoor Air Temp DB	Indoor Temperature (°F, DB)																				
	64 / 53			68 / 57			72 / 61			77 / 64			80 / 67			82 / 70			86 / 72		
	TC (Btu/h)	PI (W)	EER2	TC (Btu/h)	PI (W)	EER2	TC (Btu/h)	PI (W)	EER2	TC (Btu/h)	PI (W)	EER2	TC (Btu/h)	PI (W)	EER2	TC (Btu/h)	PI (W)	EER2	TC (Btu/h)	PI (W)	EER2
-40°F (-40°C)	7,419	385	19.28	7,741	371	20.87	8,076	357	22.63	8,426	343	24.53	8,790	331	26.58	9,171	319	28.78	9,568	307	31.14
-22°F (-30°C)	7,545	393	19.21	7,872	378	20.80	8,212	364	22.55	8,568	351	24.44	8,939	337	26.49	9,326	325	28.68	9,730	313	31.04
-15°F (-26°C)	7,672	401	19.15	8,005	386	20.73	8,351	372	22.48	8,713	358	24.36	9,090	344	26.40	9,483	332	28.58	9,894	320	30.93
-4°F (-20°C)	7,802	409	19.08	8,140	394	20.66	8,492	379	22.40	8,860	365	24.28	9,244	351	26.31	9,644	339	28.48	10,061	326	30.82
5°F (-15°C)	7,934	417	19.01	8,277	402	20.59	8,636	387	22.32	9,010	372	24.19	9,400	359	26.22	9,807	346	28.38	10,231	333	30.72
14°F (-10°C)	8,068	426	18.95	8,417	410	20.52	8,782	395	22.24	9,162	380	24.11	9,559	366	26.13	9,972	353	28.29	10,404	340	30.61
23°F (-5°C)	8,204	434	18.88	8,560	419	20.45	8,930	403	22.17	9,317	388	24.03	9,720	373	26.04	10,141	360	28.19	10,580	347	30.51
32°F (0°C)	9,015	512	17.61	9,405	493	19.06	9,812	475	20.67	10,237	457	22.40	10,680	440	24.28	11,143	424	26.28	11,625	409	28.44
50°F (10°C)	10,534	574	18.35	10,990	553	19.87	11,466	532	21.54	11,962	512	23.35	12,480	493	25.30	13,020	475	27.39	13,584	458	29.64
68°F (20°C)	11,243	807	13.93	11,730	777	15.09	12,238	748	16.36	12,768	720	17.73	13,320	693	19.21	13,897	668	20.80	14,499	644	22.51
86°F (30°C)	10,483	1,040	10.08	10,937	1,002	10.92	11,411	964	11.84	11,905	928	12.83	12,420	893	13.90	12,958	861	15.05	13,519	830	16.29
95°F (35°C)	10,129	1,164	8.70	10,567	1,121	9.42	11,025	1,079	10.22	11,502	1,039	11.07	12,000	1,000	12.00	12,520	964	12.99	13,062	929	14.06
104°F (40°C)	8,711	1,117	7.80	9,088	1,077	8.44	9,481	1,036	9.15	9,892	997	9.92	10,320	960	10.75	10,767	925	11.64	11,233	892	12.59
110°F (43°C)	8,508	1,210	7.03	8,876	1,166	7.61	9,261	1,122	8.25	9,662	1,080	8.94	10,080	1,040	9.69	10,516	1,002	10.49	10,972	966	11.36
115°F (46°C)	8,204	1,257	6.53	8,560	1,211	7.07	8,930	1,165	7.66	9,317	1,122	8.31	9,720	1,080	9.00	10,141	1,041	9.74	10,580	1,003	10.55

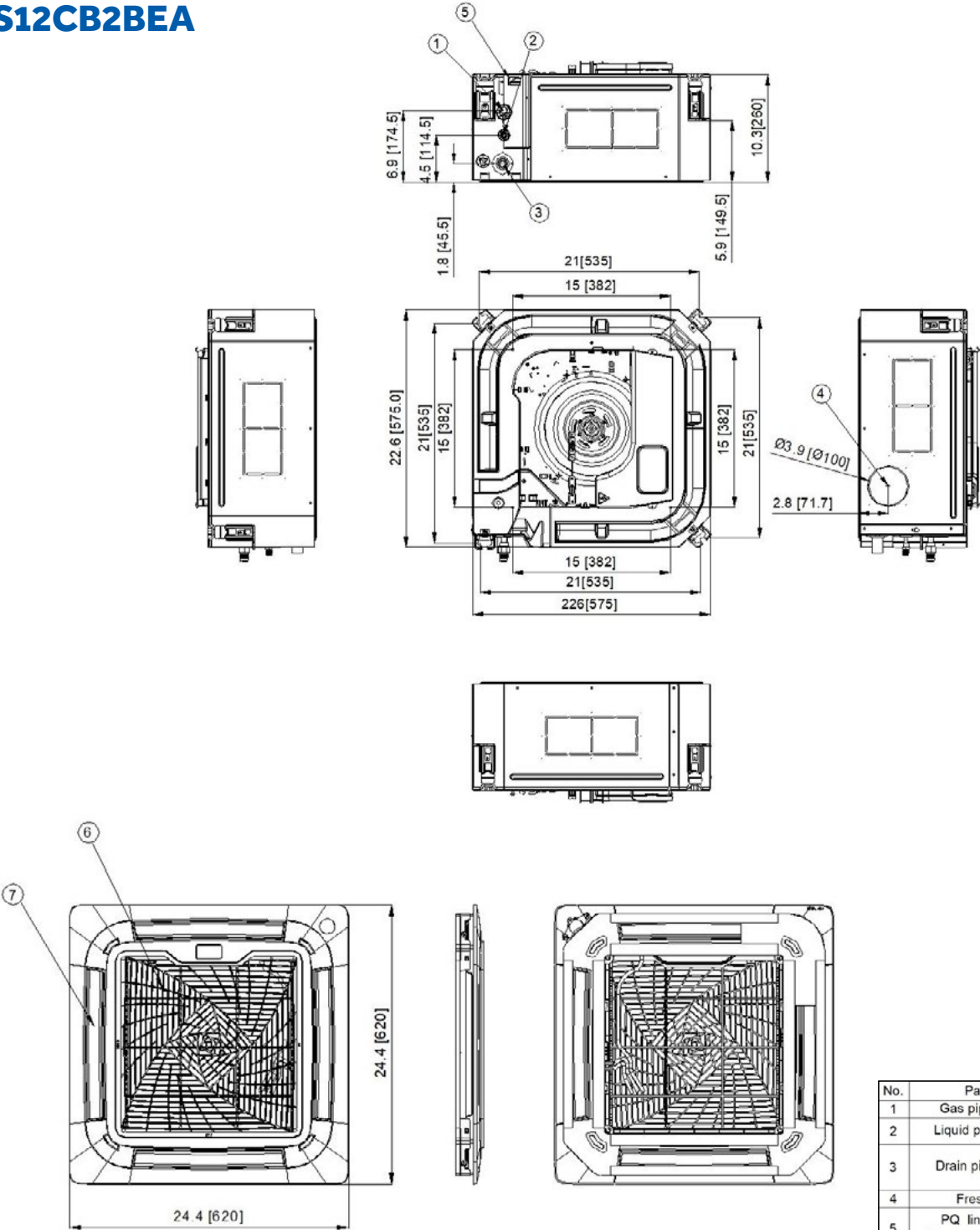
*Front/side/back wind baffle and top cover accessories are required for low ambient cooling below 23°F (-5°C).

1Q12FF2BEA



Note: Dimensions are shown in inches (millimeters)

US12CB2BEA



No.	Parts Name	Notes
1	Gas pipe connection	
2	Liquid pipe connection	
3	Drain pipe connection	OD. Diameter: Ø0.984(25), ID. Diameter: Ø0.827(21)
4	Fresh air inlet	
5	PQ line connection Power supply connection	
6	Air inlet grille	
7	Air outlet	

Note: Dimensions are shown in inches (millimeters)

Job Name: _____

Purchaser: _____

Submitted To: _____

Construction: _____

Reference: _____

Approval: _____

Date: _____

Submitted By: _____

Unit: _____

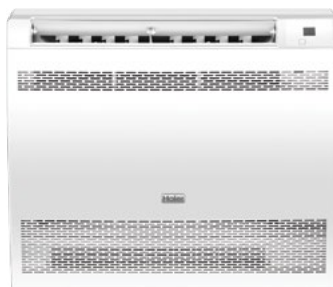
Drawing #: _____



Outdoor Model:
1Q12FF2BEA



Indoor Model:
US12FB2BEA



Outdoor Accessories

Front Wind Baffle	UAWB15WA
Side Wind Baffle	UASWB15WA
Back Wind Baffle	UAWB15WA
Top Cover	UATC15WA
Central Controller	UACT32A

Indoor Accessories

Wired Controller	QACT17B
Remote Controller	WJ26X35813

Specifications

Operating Range	Cooling (Without Wind Baffle or Top Cover)	23 ~115°F (-5~46°C)
	Cooling (With Wind Baffle or Top Cover)	-40 ~115°F (-40~46°C)
	Heating	-15 ~75°F (-26~24°C)
Power	Voltage, Cycle, Phase (V/Hz/-)	208-230/60/1
	Operating Voltage Range	187-253 VAC
Cooling	Rated Capacity Btu/hr	12,000
	Capacity Range Btu/hr	3,400-13,000
	SEER2 / EER2	19 / 9.5
	Rated Power Input W	1,263
Heating	Moisture Removal Pt./hr	3.4
	Rated Heating Capacity 47°F Btu/hr	12,500
	Heating Capacity Range Btu/hr	3,200-13,000
	COP 5°F	1.8
Outdoor Unit	HSPF2 (IV)	9.2
	Rated Power Input W	1,109
	Compressor Type	DC Inverter Rotary
	Maximum Fuse Size A	10
Indoor Unit	Minimum Circuit Amp A	9
	Outdoor Noise Level dB	55
	Dimension: H x W x D in (mm)	21 3/4 x 34 x 11 (553 x 863 x 280)
	Carton Dimension: H x W x D in (mm)	24 3/8 x 36 5/8 x 16 (618 x 929 x 407)
Indoor Unit	Weight (Net/Ship) - lbs (kg)	70.17/82.96 (31.8/37.6)
	Basepan Heater	Yes
	Fan Speed Stages	5 + Auto
	Airflow CFM: Cooling (Turbo/High/Med/Low/Quiet)	314/226/210/195/175
Indoor Unit	Indoor Motor Speed RPM: Cooling (Turbo/High/Med/Low/Quiet)	800/590/510/440/390
	Indoor Sound Level dB: Cooling (Turbo/High/Med/Low/Quiet)	48/41/37/33/30
	Airflow CFM: Heating (Turbo/High/Med/Low/Quiet)	311/223/200/195/175
	Indoor Motor Speed RPM: Heating (Turbo/High/Med/Low/Quiet)	800/590/510/440/390
Indoor Unit	Indoor Sound Level dB: Heating (Turbo/High/Med/Low/Quiet)	48/41/37/33/30
	Dimension: H x W x D in (mm)	23 5/8 x 27 1/2 x 8 3/4 (600 x 700 x 220)
	Carton Dimension: H x W x D in (mm)	26 3/8 x 30 1/4 x 11 3/8 (670 x 770 x 290)
	Weight (Net/Ship) - lbs (kg)	32.6/43.2 (14.8/19.6)
Refrigerant Lines	Drain Pipe Size O.D in	5/8
	WiFi*	Built-in
	Factory-Installed Refrigerant Detection Sensor (RDS)	Yes
	Refrigerant	R454B
Refrigerant Lines	Connections	Flare
	Liquid O.D. in	1/4
	Suction O.D. in	3/8
	Factory Charge Oz	36.5
Refrigerant Lines	Maximum Line Length Ft / m	66/20
	Maximum Height Ft / m	33/10

*WiFi includes SmartHQ™ Home and SmartHQ™ Service compatibility.

1Q12FF2BEA / US12FB2BEA

Heating Capacity Data

TC: Total Capacity PI: Power Input

Outdoor Air Temp DB	Indoor Temperature (°F, DB)																				
	60			64			68			70			72			75			79		
	TC (Btu/h)	PI (W)	COP	TC (Btu/h)	PI (W)	COP	TC (Btu/h)	PI (W)	COP	TC (Btu/h)	PI (W)	COP	TC (Btu/h)	PI (W)	COP	TC (Btu/h)	PI (W)	COP	TC (Btu/h)	PI (W)	COP
-15°F (-26°C)	5,609	894	1.84	5,274	912	1.70	5,115	930	1.61	4,961	949	1.53	4,812	969	1.46	4,667	989	1.38	4,388	1,009	1.27
-5°F (-21°C)	7,399	1,132	1.92	6,956	1,155	1.77	6,747	1,178	1.68	6,544	1,202	1.60	6,347	1,227	1.52	6,157	1,252	1.44	5,788	1,277	1.33
0°F (-18°C)	8,712	1,259	2.03	8,191	1,284	1.87	7,944	1,311	1.78	7,705	1,337	1.69	7,474	1,365	1.61	7,249	1,393	1.53	6,815	1,421	1.41
5°F (-15°C)	10,741	1,460	2.16	10,098	1,490	1.99	9,795	1,520	1.89	9,500	1,551	1.80	9,214	1,583	1.71	8,937	1,615	1.62	8,402	1,648	1.49
14°F (-10°C)	9,786	1,076	2.67	9,200	1,098	2.46	8,924	1,121	2.33	8,655	1,143	2.22	8,395	1,167	2.11	8,143	1,191	2.00	7,655	1,215	1.85
23°F (-5°C)	10,860	1,040	3.06	10,210	1,061	2.82	9,903	1,083	2.68	9,605	1,105	2.55	9,316	1,128	2.42	9,036	1,151	2.30	8,495	1,174	2.12
32°F (0°C)	11,218	1,003	3.28	10,546	1,024	3.02	10,229	1,045	2.87	9,922	1,066	2.73	9,623	1,088	2.59	9,334	1,110	2.46	8,775	1,133	2.27
41°F (5°C)	12,293	994	3.62	11,556	1,014	3.34	11,209	1,035	3.17	10,872	1,056	3.02	10,545	1,078	2.87	10,228	1,100	2.73	9,615	1,122	2.51
47°F (8°C)	14,133	1,044	3.97	13,287	1,065	3.66	12,888	1,087	3.48	12,500	1,109	3.30	12,124	1,132	3.14	11,760	1,155	2.98	11,055	1,178	2.75
55°F (13°C)	13,568	888	4.48	12,755	906	4.13	12,372	924	3.92	12,000	943	3.73	11,639	962	3.54	11,289	982	3.37	10,613	1,002	3.10
65°F (18°C)	13,992	751	5.46	13,154	767	5.03	12,758	782	4.78	12,375	798	4.54	12,002	815	4.32	11,642	831	4.10	10,944	848	3.78
75°F (24°C)	14,556	815	5.24	13,685	831	4.82	13,273	848	4.59	12,874	866	4.36	12,487	883	4.14	12,112	901	3.94	11,386	920	3.63

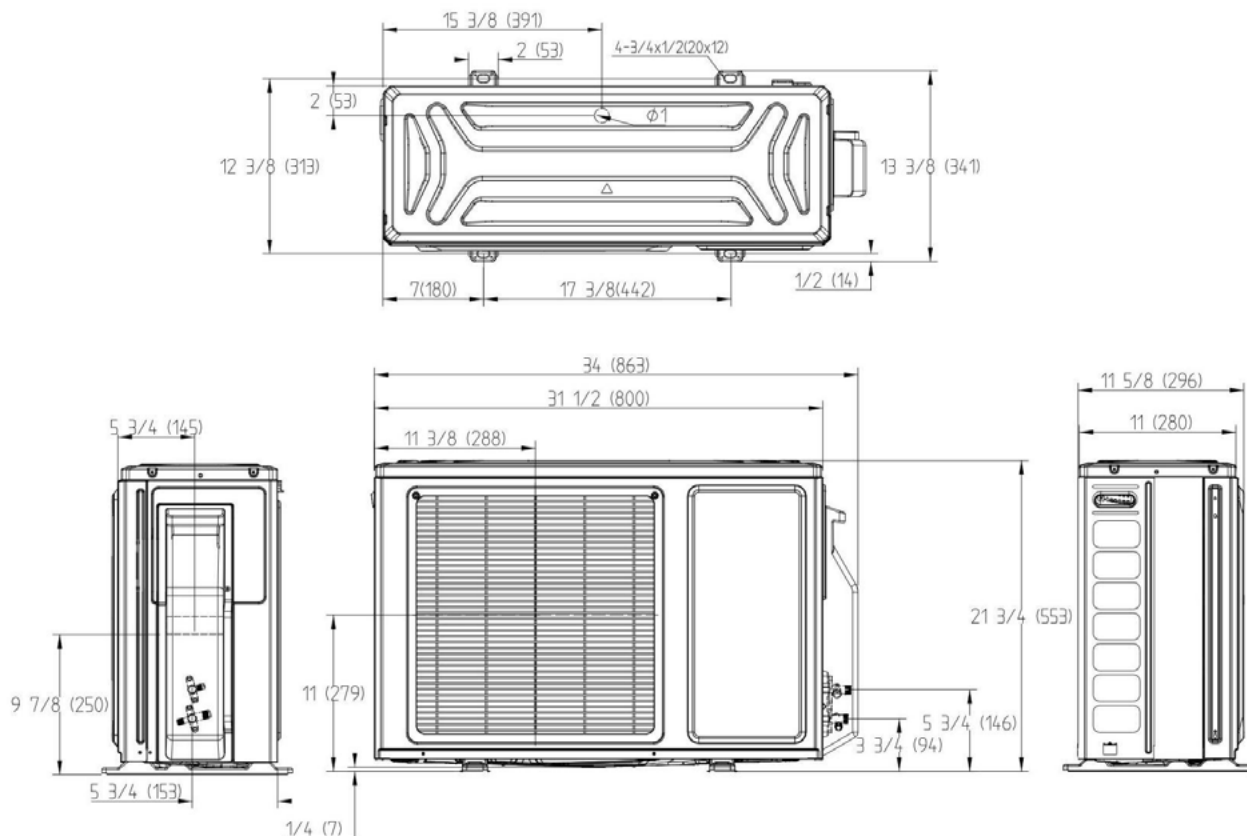
Cooling Capacity Data

TC: Total Capacity PI: Power Input

Outdoor Air Temp DB	Indoor Temperature (°F, DB)																				
	64 / 53			68 / 57			72 / 61			77 / 64			80 / 67			82 / 70			86 / 72		
	TC (Btu/h)	PI (W)	EER2	TC (Btu/h)	PI (W)	EER2	TC (Btu/h)	PI (W)	EER2	TC (Btu/h)	PI (W)	EER2	TC (Btu/h)	PI (W)	EER2	TC (Btu/h)	PI (W)	EER2	TC (Btu/h)	PI (W)	EER2
-40°F (-40°C)	6,595	365	18.09	6,880	351	19.58	7,178	338	21.23	7,489	325	23.01	7,813	313	24.94	8,152	302	27.00	8,505	291	29.22
-22°F (-30°C)	6,706	372	18.02	6,997	359	19.52	7,300	345	21.16	7,616	332	22.93	7,946	320	24.85	8,290	308	26.91	8,648	297	29.12
-15°F (-26°C)	6,820	380	17.96	7,115	366	19.45	7,423	352	21.09	7,744	339	22.85	8,080	326	24.77	8,430	314	26.81	8,795	303	29.02
-4°F (-20°C)	6,935	387	17.90	7,235	373	19.38	7,549	359	21.01	7,875	346	22.78	8,216	333	24.68	8,572	321	26.72	8,943	309	28.92
5°F (-15°C)	7,052	395	17.84	7,358	381	19.31	7,676	367	20.94	8,008	353	22.70	8,355	340	24.60	8,717	327	26.63	9,094	316	28.82
14°F (-10°C)	7,171	403	17.78	7,482	389	19.25	7,806	374	20.87	8,144	360	22.62	8,496	347	24.51	8,864	334	26.54	9,248	322	28.72
23°F (-5°C)	7,293	412	17.72	7,608	397	19.18	7,938	382	20.80	8,281	367	22.54	8,640	354	24.43	9,014	341	26.45	9,404	329	28.62
32°F (0°C)	8,002	490	16.33	8,348	472	17.68	8,709	454	19.17	9,086	437	20.78	9,480	421	22.51	9,890	406	24.37	10,319	391	26.38
50°F (10°C)	9,217	549	16.79	9,616	529	18.18	10,033	509	19.72	10,467	490	21.37	10,920	472	23.16	11,393	454	25.07	11,886	438	27.13
68°F (20°C)	10,230	843	12.14	10,673	812	13.14	11,135	781	14.25	11,617	752	15.44	12,120	724	16.74	12,645	698	18.12	13,192	673	19.61
86°F (30°C)	9,723	1,117	8.70	10,144	1,076	9.42	10,584	1,036	10.22	11,042	997	11.07	11,520	960	12.00	12,019	925	12.99	12,539	892	14.06
95°F (35°C)	10,129	1,470	6.89	10,567	1,416	7.46	11,025	1,363	8.09	11,502	1,312	8.77	12,000	1,263	9.50	12,520	1,217	10.29	13,062	1,173	11.13
104°F (40°C)	8,609	1,372	6.27	8,982	1,322	6.79	9,371	1,272	7.37	9,776	1,224	7.98	10,200	1,179	8.65	10,641	1,136	9.37	11,102	1,095	10.14
110°F (43°C)	8,204	1,470	5.58	8,559	1,416	6.04	8,930	1,363	6.55	9,316	1,312	7.10	9,720	1,263	7.70	10,140	1,217	8.33	10,579	1,173	9.02
115°F (46°C)	7,900	1,568	5.04	8,242	1,511	5.45	8,599	1,454	5.91	8,971	1,399	6.41	9,359	1,347	6.95	9,764	1,298	7.52	10,187	1,252	8.14

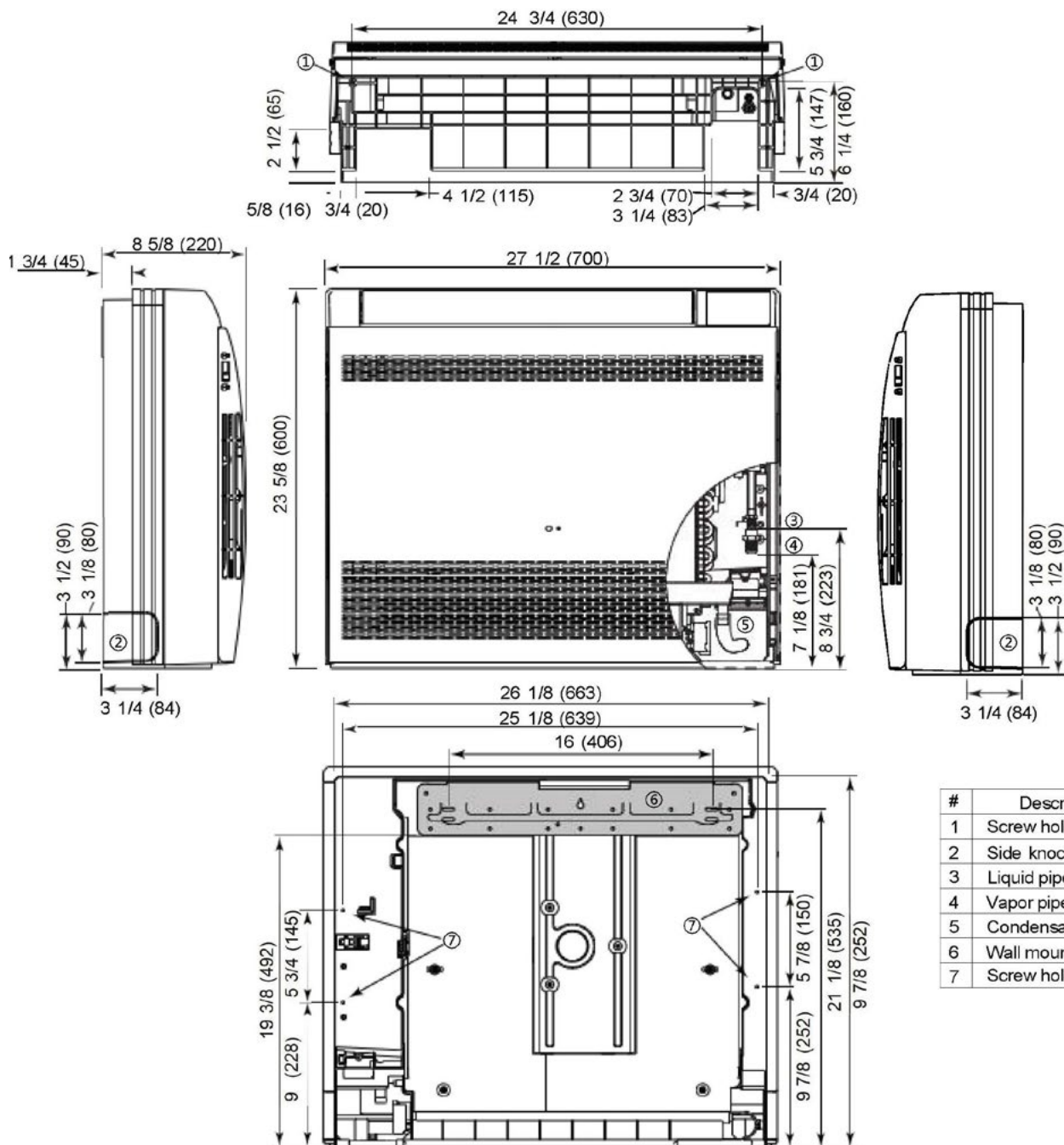
*Front/side/back wind baffle and top cover accessories are required for low ambient cooling below 23°F (-5°C).

1Q12FF2BEA



Note: Dimensions are shown in inches (millimeters)

US12FB2BEA



Note: Dimensions are shown in inches (millimeters)

Job Name: _____

Purchaser: _____

Submitted To: _____

Construction: _____

Reference: _____

Approval: _____

Date: _____

Submitted By: _____

Unit: _____

Drawing #: _____



Outdoor Model:
1Q12FF2BEA



Indoor Model:
US12MB2BEA



Outdoor Accessories

Front Wind Baffle	UAWB15WA
Side Wind Baffle	UASWB15WA
Back Wind Baffle	UAWB15WA
Top Cover	UATC15WA
Central Controller	UACT32A

Indoor Accessories

Wired Controller	QACT17B
Supply Plenum	UAPT0912A
MERV Return Air Filter Box	UAMFB0912A

Specifications

Operating Range	Cooling (Without Wind Baffle or Top Cover)	23 ~ 115°F (-5 ~ 46°C)
	Cooling (With Wind Baffle or Top Cover)	-40 ~ 115°F (-40 ~ 46°C)
	Heating	-15 ~ 75°F (-26 ~ 24°C)
Power	Voltage, Cycle, Phase (V/Hz/-)	208-230/60/1
	Operating Voltage Range	187-253 VAC
Cooling	Rated Capacity Btu/hr	12,000
	Capacity Range Btu/hr	3,400-13,000
	SEER2 / EER2	17 / 10.3
	Rated Power Input W	1,143
Heating	Moisture Removal Pt./hr	2.7
	Rated Heating Capacity 47°F Btu/hr	13,000
	Heating Capacity Range Btu/hr	3,200-14,000
	COP 5°F	1.8
	HSPF2 (IV)	9.4
Outdoor Unit	Rated Power Input W	1,089
	Compressor Type	DC Inverter Rotary
	Maximum Fuse Size A	10
	Minimum Circuit Amp A	9
	Outdoor Noise Level dB	55
	Dimension: H x W x D in (mm)	21 3/4 x 34 x 11 (553 x 863 x 280)
	Carton Dimension: H x W x D in (mm)	24 3/8 x 36 5/8 x 16 (618 x 929 x 407)
Indoor Unit	Weight (Net/Ship) - lbs (kg)	70.17/82.96 (31.8/37.6)
	Basepan Heater	Yes
	Fan Speed Stages	5 + Auto
	Airflow CFM: Cooling (Turbo/High/Med/Low/Quiet)	409/350/308/158/148
	Indoor Motor Speed RPM: Cooling (Turbo/High/Med/Low/Quiet)	950/870/780/680/600
	Indoor Sound Level dB: Cooling (Turbo/High/Med/Low/Quiet)	44/43/38/35/34
	Airflow CFM: Heating (Turbo/High/Med/Low/Quiet)	412/355/311/163/152
	Indoor Motor Speed RPM: Heating (Turbo/High/Med/Low/Quiet)	950/870/780/680/600
	Indoor Sound Level dB: Heating (Turbo/High/Med/Low/Quiet)	44/43/38/35/35
	Dimension: H x W x D in (mm)	9 3/4 x 31 3/4 x 27 1/2 (248 x 805 x 700)
	Carton Dimension: H x W x D in (mm)	12 5/8 x 37 1/2 x 33 1/2 (320 x 950 x 850)
	Weight (Net/Ship) - lbs (kg)	62.17/86.86 (28.2/39.4)
	Max. External Static Pressure in.WG (Pa)	0.6 (150)
	Drain Pipe Size O.D in	1*
Refrigerant Lines	Max. Drain-Lift Height in (mm)	27 1/2 (700)
	WiFi**	Built-in
	Factory-Installed Refrigerant Detection Sensor (RDS)	Yes
	Refrigerant	R454B
	Connections	Flare
	Liquid O.D. in	1/4
	Suction O.D. in	3/8
Refrigerant Lines	Factory Charge Oz	36.5
	Maximum Line Length Ft / m	66/20
	Maximum Height Ft / m	33/10

For more information visit us:

GEAppliancesAirAndWater.com©Copyright 2025 GE Appliances, a Haier Company.
Our continued commitment to quality products may mean a change in specifications without notice.

*Condensate drain adapter shipped with indoor unit is designed to accept a 3/4" PVC pipe.

**WiFi includes SmartHQ™ Home and SmartHQ™ Service compatibility.

1Q12FF2BEA / US12MB2BEA

Heating Capacity Data

TC: Total Capacity PI: Power Input

Outdoor Air Temp DB	Indoor Temperature (°F, DB)																				
	60			64			68			70			72			75			79		
	TC (Btu/h)	PI (W)	COP	TC (Btu/h)	PI (W)	COP	TC (Btu/h)	PI (W)	COP	TC (Btu/h)	PI (W)	COP	TC (Btu/h)	PI (W)	COP	TC (Btu/h)	PI (W)	COP	TC (Btu/h)	PI (W)	COP
-15°F (-26°C)	5,916	976	1.78	5,562	996	1.64	5,395	1,016	1.56	5,232	1,037	1.48	5,075	1,058	1.41	4,923	1,080	1.34	4,628	1,102	1.23
-5°F (-21°C)	7,460	1,199	1.82	7,013	1,223	1.68	6,802	1,248	1.60	6,597	1,274	1.52	6,399	1,300	1.44	6,207	1,326	1.37	5,835	1,353	1.26
0°F (-18°C)	8,360	1,243	1.97	7,859	1,268	1.82	7,623	1,294	1.73	7,394	1,321	1.64	7,171	1,348	1.56	6,956	1,375	1.48	6,539	1,403	1.37
5°F (-15°C)	10,289	1,398	2.16	9,673	1,426	1.99	9,382	1,455	1.89	9,100	1,485	1.80	8,826	1,515	1.71	8,561	1,546	1.62	8,048	1,578	1.50
14°F (-10°C)	10,289	1,309	2.30	9,673	1,336	2.12	9,382	1,363	2.02	9,100	1,391	1.92	8,826	1,419	1.82	8,561	1,448	1.73	8,048	1,478	1.60
23°F (-5°C)	11,575	1,265	2.68	10,882	1,291	2.47	10,555	1,317	2.35	10,237	1,344	2.23	9,930	1,371	2.12	9,631	1,399	2.02	9,054	1,428	1.86
32°F (0°C)	11,961	1,220	2.87	11,245	1,245	2.65	10,907	1,271	2.52	10,579	1,297	2.39	10,261	1,323	2.27	9,952	1,350	2.16	9,356	1,378	1.99
41°F (5°C)	13,644	1,077	3.71	12,827	1,099	3.42	12,441	1,122	3.25	12,067	1,145	3.09	11,704	1,168	2.94	11,352	1,192	2.79	10,672	1,216	2.57
47°F (8°C)	14,699	1,025	4.20	13,818	1,046	3.87	13,403	1,067	3.68	13,000	1,089	3.50	12,609	1,111	3.33	12,230	1,134	3.16	11,498	1,157	2.91
55°F (13°C)	14,405	981	4.30	13,542	1,002	3.96	13,135	1,022	3.77	12,740	1,043	3.58	12,357	1,064	3.40	11,985	1,086	3.24	11,268	1,108	2.98
65°F (18°C)	14,846	911	4.78	13,957	930	4.40	13,537	949	4.18	13,130	968	3.98	12,735	988	3.78	12,352	1,008	3.59	11,613	1,028	3.31
75°F (24°C)	15,874	987	4.71	14,924	1,008	4.34	14,475	1,028	4.13	14,040	1,049	3.92	13,618	1,070	3.73	13,208	1,092	3.54	12,417	1,115	3.26

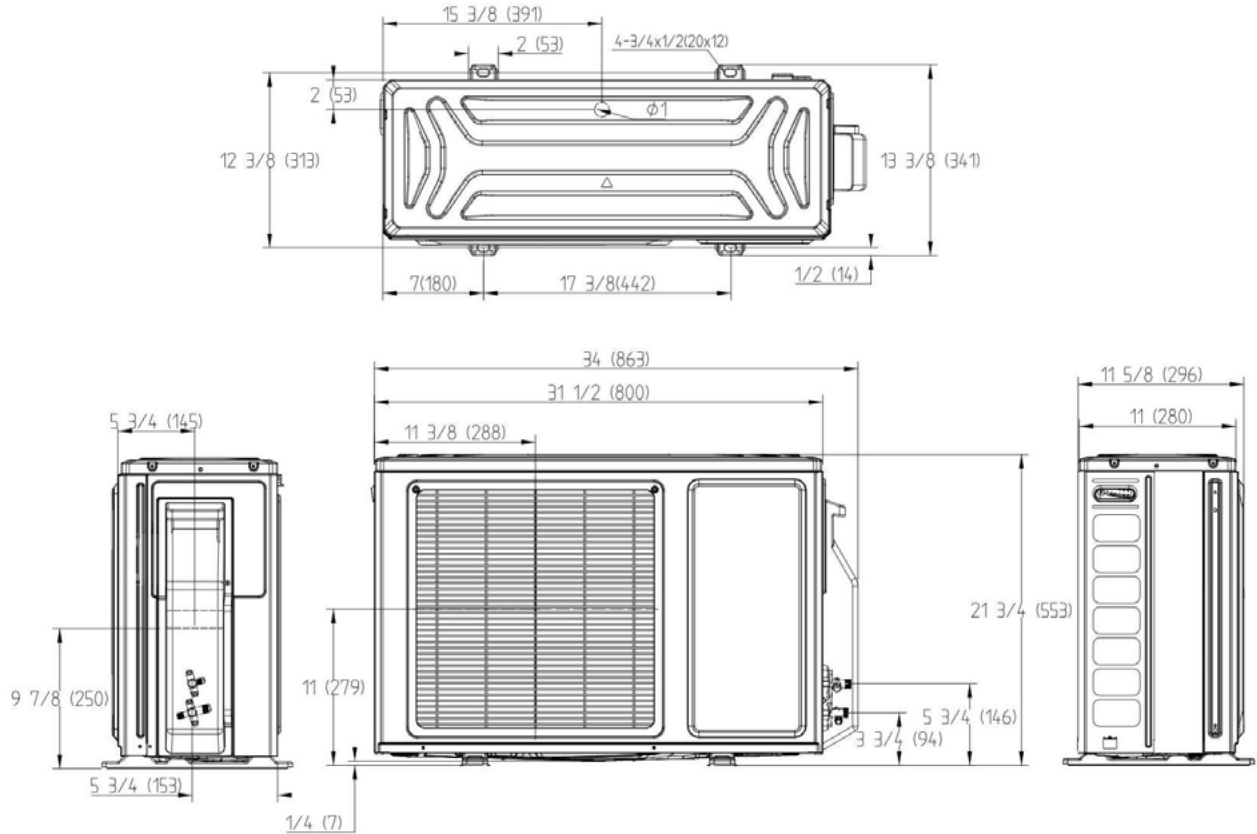
Cooling Capacity Data

TC: Total Capacity PI: Power Input

Outdoor Air Temp DB	Indoor Temperature (°F, DB)																				
	64 / 53			68 / 57			72 / 61			77 / 64			80 / 67			82 / 70			86 / 72		
	TC (Btu/h)	PI (W)	EER2	TC (Btu/h)	PI (W)	EER2	TC (Btu/h)	PI (W)	EER2	TC (Btu/h)	PI (W)	EER2	TC (Btu/h)	PI (W)	EER2	TC (Btu/h)	PI (W)	EER2	TC (Btu/h)	PI (W)	EER2
-40°F (-40°C)	7,511	471	15.94	7,836	454	17.25	8,175	437	18.71	8,529	421	20.28	8,898	405	21.97	9,284	390	23.79	9,686	376	25.74
-22°F (-30°C)	7,638	481	15.88	7,968	463	17.19	8,313	446	18.64	8,673	429	20.21	9,049	413	21.90	9,441	398	23.71	9,849	384	25.65
-15°F (-26°C)	7,767	491	15.83	8,103	473	17.14	8,454	455	18.58	8,820	438	20.14	9,202	422	21.82	9,600	406	23.62	10,016	392	25.57
-4°F (-20°C)	7,898	501	15.77	8,240	483	17.08	8,597	464	18.51	8,969	447	20.07	9,357	430	21.75	9,762	415	23.54	10,185	400	25.48
5°F (-15°C)	8,031	511	15.72	8,379	492	17.02	8,742	474	18.45	9,120	456	20.00	9,515	439	21.67	9,927	423	23.46	10,357	408	25.39
14°F (-10°C)	8,167	521	15.66	8,521	502	16.96	8,890	483	18.39	9,275	465	19.93	9,676	448	21.60	10,095	432	23.38	10,532	416	25.30
23°F (-5°C)	8,305	532	15.61	8,665	513	16.90	9,040	493	18.32	9,431	475	19.86	9,840	457	21.52	10,266	441	23.30	10,710	425	25.22
32°F (0°C)	9,318	585	15.92	9,721	564	17.24	10,142	543	18.69	10,582	522	20.26	11,040	503	21.95	11,518	485	23.77	12,016	467	25.72
50°F (10°C)	9,925	656	15.13	10,355	632	16.38	10,804	608	17.76	11,271	586	19.25	11,759	564	20.86	12,268	543	22.58	12,800	524	24.44
68°F (20°C)	10,736	922	11.64	11,201	889	12.60	11,686	855	13.67	12,192	823	14.81	12,720	792	16.05	13,270	764	17.38	13,845	736	18.81
86°F (30°C)	10,432	1,188	8.78	10,884	1,145	9.51	11,355	1,102	10.31	11,847	1,061	11.17	12,360	1,021	12.11	12,895	984	13.10	13,453	949	14.18
95°F (35°C)	10,129	1,330	7.61	10,567	1,282	8.24	11,025	1,233	8.94	11,502	1,187	9.69	12,000	1,143	10.50	12,520	1,102	11.37	13,062	1,062	12.30
104°F (40°C)	8,711	1,295	6.73	9,088	1,248	7.28	9,481	1,201	7.90	9,892	1,156	8.56	10,320	1,113	9.28	10,767	1,072	10.04	11,233	1,034	10.87
110°F (43°C)	8,305	1,383	6.00	8,665	1,333	6.50	9,040	1,283	7.05	9,431	1,235	7.64	9,840	1,189	8.28	10,266	1,146	8.96	10,710	1,104	9.70
115°F (46°C)	7,900	1,472	5.37	8,242	1,418	5.81	8,599	1,365	6.30	8,971	1,314	6.83	9,360	1,265	7.40	9,765	1,219	8.01	10,188	1,175	8.67

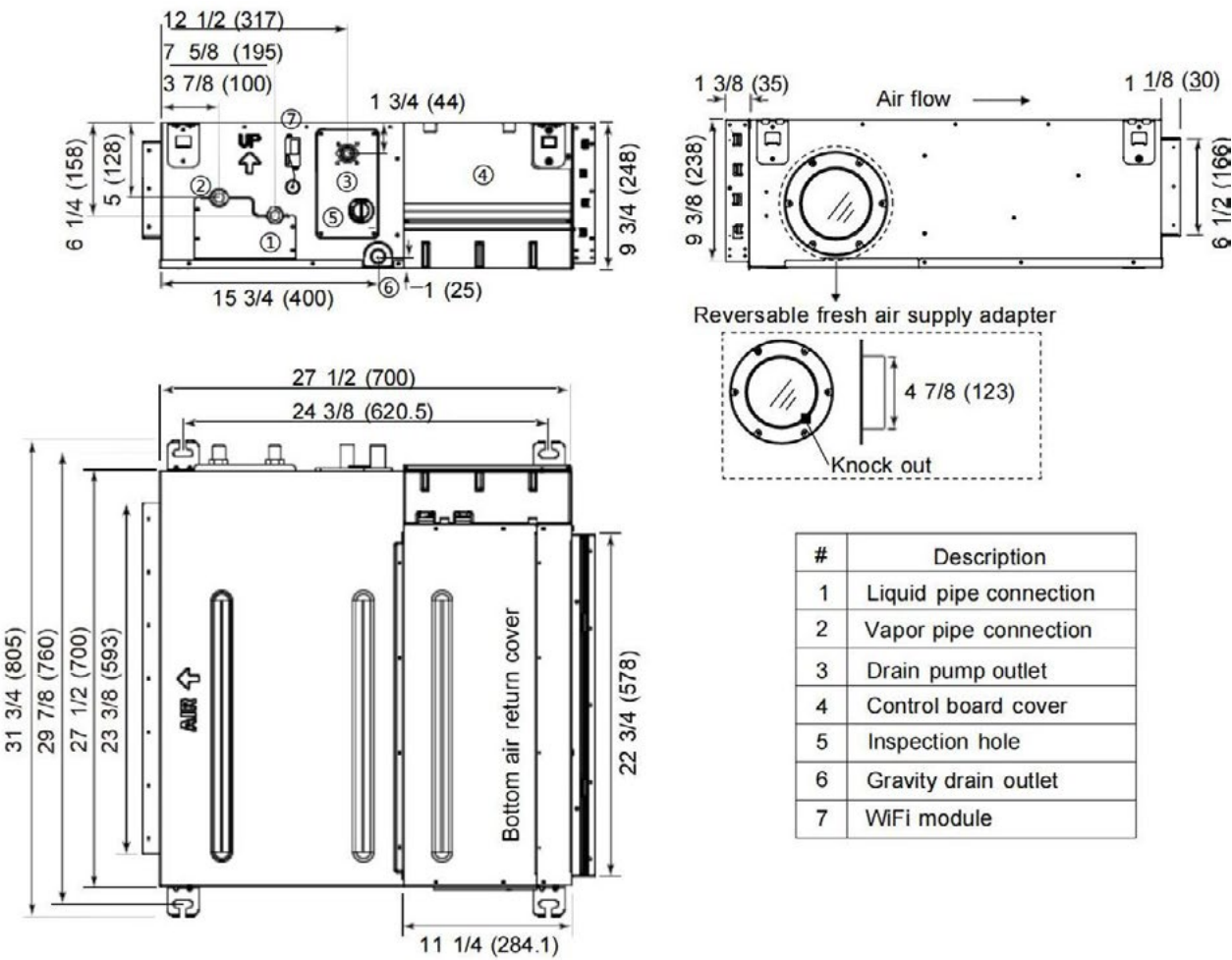
*Front/side/back wind baffle and top cover accessories are required for low ambient cooling below 23°F (-5°C).

1Q12FF2BEA



Note: Dimensions are shown in inches (millimeters)

US12MB2BEA



Note: Dimensions are shown in inches (millimeters)

SUBMITTAL REVISION HISTORY

05-14-25: Submittal release.